

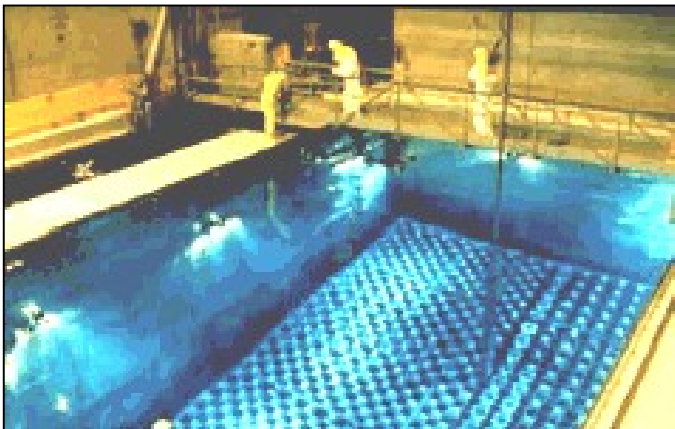
November 2005 Event

ASME dinner and presentation on **AMERENUE CALLAWAY NUCLEAR PLANT**

Wednesday, November 30, 2005
Jim Campbell, Event Captain (618-283-4700)

Join us on November 30th for a dinner and presentation on AmerenUE's Callaway Nuclear Plant. This 1,200 MW single-unit, pressurized water reactor generating station will complete its 14th refueling outage this fall. During this outage Ameren employees, and hundreds of contractors, are replacing the plant's four steam generators and its turbine rotors, refueling the reactor, and performing thousands of maintenance activities.

Rick Eastman, supervisor Business Planning & Communications at Callaway, will address ASME to share more information about the Callaway Nuclear Plant and the refueling outage.



In 1984, UE completed its Callaway nuclear plant. Total project cost was \$3 billion. Located about 100 miles west of St. Louis and 10 miles southeast of Fulton, Mo., Callaway's 1,143 megawatt capacity makes it the largest single unit in the Ameren system. Callaway nuclear plant produces about a quarter of AmerenUE's power. It has been an industry leader in both safety and performance. Callaway has generated an average of 8.9 billion kilowatt-hours of electricity per year, equal to the amount used annually by more than 750,000 average households.

The Callaway Plant is a Standardized Nuclear Unit Power Plant System (SNUPPS), using a Westinghouse four-loop pressurized water reactor and a General Electric turbine-generator. Uranium is used in nuclear fission that heats water into steam. The steam, under pressure, spins the blades of a turbine, which in turn spins a generator that creates electricity.



Date: Wednesday Evening, November 30, 2005.

Time: 5:30 pm cash bar, 6:15 pm dinner, 7:00 pm presentation.

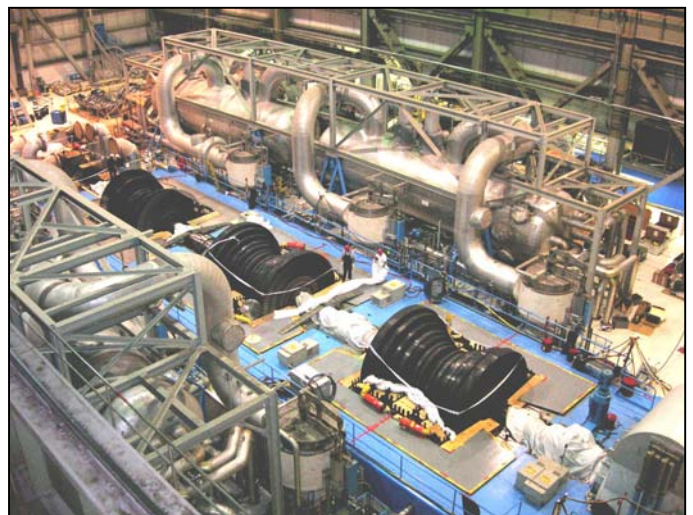
Location: Rigazzi's restaurant, 4945 Daggett, St. Louis, MO 63110, (314) 772-4900

Menu: Rigazzi's buffet style service.

Cost: \$25.00 members and guests, \$15.00 student section members.

Directions: Take 64 to Kingshighway Blvd. turn south, two blocks south of 44 turn west on Daggett. See map on last page.

Reservations: Reservations required by 5:00 pm on Monday November 21, 2005. by calling Jim Campbell at 618-283-4700 ext. 260 or email at jim.c@vansealcorp.com.



Information: For more details, contact this program's captain, Jim Campbell at 618-283-4700 ext. 260 or email at jim.c@vansealcorp.com.

Message from the Chair



WeASME is still in the process of rolling out and implementing elements of its reorganization. I would like to take this opportunity to encourage you to learn about the changes ASME is undergoing. A couple of ways to do this are by visiting the ASME Connections site or participating in discussions on the ASME Communities of Practice site.

ASME Connections site at www.asme.org/asmconnections introduces you to the people who are active in projects and initiatives in areas that have been identified as key to our strategic objectives. Also included are charts and presentations, to help you track the changes that have been discussed and adopted during the past year

ASME's Community of Practice discussion boards located at www.cop.asme.org are a great way to talk to your peers about technical matters, career and personal interests, and the changes that ASME is undergoing.

Several communities of interest, moderated by volunteer members, have been launched on topics ranging from Engineering Entrepreneurs to Power Plant professions. On the COP site, you can join a community, search for a community member, suggest a new community, participate in discussions and polls, and post your own message or request to be notified when messages are posted on the community. It's your choice what communities you participate in, and how you choose to participate.

The Communities of Practice pages allow you to customize your own personal page to include your communities, your own links and calendar and to access an ASME event calendar.

You will need to register the first time that you use the page, and set your preferences for your home page. It only takes a few moments.

If you have any questions or want more information on how to stay connected to what is going on in ASME, please contact me, Jim Campbell, at (618) 283-4700 ext. 260 or at jjim.c@vansealcorp.com

James Campbell
St. Louis Section Chair

ASME-STL Section Programs for the year 2005-2006,

Sridhar Condoor – Vice Chairman

December 2005 date TBA: Holiday Social and Awards Banquet
Speaker/Org: ASME Representative
Captain: Bill Baker, Location: Carousel House in Faust Park

January 2006 date TBA: Technical Meeting,
Speaker/Topic: Laclede Gas - CNG vehicles
Captain: Tom Mull

February 2006 date TBA: Technical Dinner Meeting
Speaker/Org: Engineered Support Systems
Captain: Jim Campbell

March 15, 2006: Technical Dinner Meeting and Joint Meeting
Speaker/Org: Solly Angel – Author of The Tale of the Scale
Captain: Sridhar Condoor, Location: Saint Louis University

April 19, 2006: Professional Tour
Captain: Angela Berring
Location: Six Flags

May 2006 date TBA: Professional Tour and Technical Meeting
Speaker: Brain Computer Interfaces, Dr. Daniel Moran [Tentat.]
Captain: Tom Bever

Please join us at the upcoming ASME-STL Board Meetings

6:00 p.m. Tuesday, December 6th
6:00 p.m. Wednesday, January 11th
6:00 p.m. Tuesday, February 7th
at Laclede Street Bar and Grille
3818 Laclede Avenue
near Saint Louis University Campus

We need to plan for the next operating year (2006-07). A nominating committee will be formed soon to nominate officers for next year. In the November dinner meeting, we will seek nominations to serve on the Nominating Committee. The committee will be formed to submit nominations to the executive board. Then, the officers will be chosen based on election within the membership of the section. If you are interested, please contact ASME STL secretary Angela Berring at 618-258-2214 or by email to ACBerring@Olin.com.

FIND YOUR FELLOW ASME MEMBERS

ASME enables you to find other members at ASME website: <https://members.asme.org/myasme/membershipsearch/searchmembership.cfm> - With this link, you can find members of any section, technical division, or membership grade, along with name, address, email and telephone contact information shared for use in ASME society and professional affairs.

ASME FOCUSES ON COMPANY MEMBERSHIPS

ASME has announced the launch of ASME Solutions, a unique resource that provides businesses and corporations with the tools needed to enhance productivity and gain a competitive advantage in today's new and expanding global markets.

ASME Solutions is designed to work with businesses to create a professional development path for engineers and technicians, by providing continuous training, certifications and career development opportunities for companies that want to stay on the leading edge of technological advances.

Companies will also find benefits from ASME's ability to provide gap analysis, 24-hour access to online knowledge and training resources, and cost savings options through ASME's specially priced product packages.

ASME Solutions addresses the specific challenges and opportunities of engineering-driven industries in areas such as pressure technology, energy, bio/pharmaceuticals, homeland security, water management, and computer technology.

"ASME Solutions plays an important role in the Society's strategic initiative on industry, aimed at providing products and services that can increase company innovation and productivity, while helping engineers understand how to better work in a global environment", said Richard E. Feigel, ASME president.

A team of ASME Solutions customer relations professionals will be available to assist companies in assessing corporate workforce development needs and offer assistance in customizing training opportunities that fall in line with business strategies and goals.

Corporate customers will discover that ASME Solutions ensures efficiency by maintaining resources, including publications, training, and codes and standards, in one centralized online location -- www.asmesolutions.org

Today's new and expanding global market demands more than conventional thinking. Whatever your business, you need to build and maintain your engineering edge, with the insight and training that only comes from a leader. You need ASME Solutions - a powerful comprehensive and unique resource that provides you with industry-specific tools you require for success. ASME offers special, competitively priced packages that include:

- Codes and standards for your industry.
- Group enrollment of ASME members with full benefits.
- Group subscriptions to the ASME Corporate online library.
- Discounts on group registrations for ASME conferences, public short courses, in-company training, seminars and expositions.
- Short course deep discounts for 25 or more.

-ASME certification programs to verify employee knowledge in areas such as geometric dimensioning & tolerancing and engineering management through the Engineering Management Certification International.

-Print and electronic editions of ASME journals, conference proceedings, reference books, and training materials.

ASME Solutions lets you design a streamlined program of knowledge and training resources allowing you to:

- Stay on top of your industry's technological advances.
- Create a corporate university by providing technical and management training onsite, online, or at your location.
- Network with fellow engineers by participating in ASME's online communities of practice, local Sections meetings, workshops, conferences, exhibits, and publications.
- Market your organization to business executives, engineering managers and other key decision makers through sponsorships, trade show exhibits and the ASME membership database of 300,000 technical professionals worldwide.

Industry Contacts:

Energy contact Vince Dilworth phone (925) 244-1360 fax(925) 244-1359.

Pressure Technology contact Thomas Wendt phone (262) 752-9193 fax (262) 752-9195.

Bio/Pharmaceutical contact Lee Hawkins phone: (214) 503-3727 fax (214) 503-3729.

or contact Amy Geffen, Director of Strategic Initiatives, phone (212) 591-7375 fax (212) 591-7143.

INDUSTRY IN ASME STL SECTION

Business and corporations in the St. Louis area have many ASME STL section members within their organizations.

Top ASME STL section membership populations include:

Ameren
Boeing
Emerson
Anheuser-Busch
MECS EnviroChem
Nooter Erickson
Conoco Phillips
Dynege
Tyco Mallinkrodt
American Power Conversion
Marathon Ashland
Monsanto
Sunnen
Pfizer
Sigma-Aldrich
Watlow
IR Hussmann

ASME & AIChE Joint Membership

Now current ASME members can join AIChE and get the benefits of membership at a one-third discount through our special joint membership offer. In order to qualify, you must be a paid member of ASME. For more details on AIChE membership and benefits, visit www.aiche.org

To join AIChE now at a one-third discount, just go to <https://www.aiche-mart.org/memberapps/memapp.asp> and use the code JTAICH along with your membership number when prompted.

ASME members can now subscribe to Chemical Engineering Progress (CEP) from AIChE at the discount price of \$30 - a savings of \$105 off the non-member price. For information about the content of Chemical Engineering Progress, please check the AIChE website www.cepmagazine.org. To order, send a check for \$30, made out to AIChE and mail your order to: John Beck, Manager, Member Records, ASME, Three Park Avenue, New York, NY 10016. Please include your ASME member number, along with your name and mailing address.

For questions, please contact John Beck at ASME 212-591-8463 or beckj@asme.org

Become Active in the St. Louis Science Center Planetarium



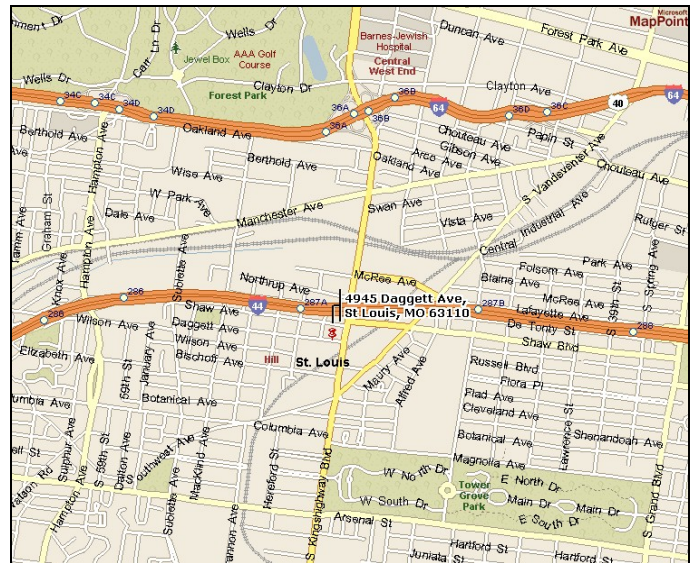
Gregg Maryniak, Director of the James S. McDonnell Planetarium, continues to develop and incorporate new technology displays at the Planetarium, part of the St. Louis Science Center. His goal is to create highly interactive and educational experiences for youth (and adults) bringing them closer to science and technology.

You can become part of this experience by spending a few hours each month connecting participants to the science behind the displays. This is a great way to advance technology in our community and directly influence tomorrow's engineers. If you have an interest in contributing some time towards this experience, please talk to Gregg at the ASME September 13 "Winning of the ANSARI X PRIZE" presentation or email **David Ritchey** at dritchey@slsc.org at the St. Louis Science Center.

ST. LOUIS NEWSLETTER AD SPACE AVAILABLE

1. The standard page for the newsletter is two vertical columns, each 3.5 inches wide x either 8.0 or 9.5 inches high, depending on the page location within the newsletter.
2. Ad rates are based upon black ink on buff colored paper, color printing is not available.
3. Rates for full page inserts: same as above for full page, plus all additional costs of paper, printing, folding, stuffing, sorting, and postage.
4. Ads prepared by the advertiser, in "MSWord" or convertible text files for text wording; or in .bmp, .tif, or .jpg image files for graphic images, ready for the printer. Please contact STL section Angela Berring at 618-258-2214 (acberring@olin.com).

MAP TO RIGAZZIS RESTAURANT



ASME November event at Rigazzis restaurant at 4945 Daggett Avenue:

ASME STL Mail / Return Address

ASME St. Louis Section.
c/o Engineer's Club of St. Louis
4359 Lindell Blvd.
St. Louis, MO 63108

ASME 2005/2006 St. Louis Section Board

Chair James Campbell VanSeal Corp.	Vice Chair Dr. Sridhar Condoor St. Louis University	Secretary Angela Berring Olin Corporation	Treasurer Mary Hammond EDM Inc.	First Past Chair Dr. S. Karunamoorthy St. Louis University	Second Past Chair Thomas Mull Thomas Mull & Associates	Newsletter editor Duane Meyer The Benham Companies
618-283-4700 x260 jim.c@vansealcorp.com	314-977-8444 condoor @slu.edu	618-258-2214 acberring @olin.com	314-231-5485 mary.hammond @edm-inc.com	314-977-8442 karunamoors @slu.edu	636-938-6173 mullt @att.net	314-821-7017 duane.meyer @benham.com