

CONTENTS

UNIVERSITY OF MISSOURI MISSION STATEMENT

CAMPUS MISSION & VISION

BRIEF HISTORY OF UMR

MSM/UMR DIRECTORS, DEANS AND CHANCELLORS

GOVERNANCE OF THE INSTITUTION, BOARD OF CURATORS

UNIVERSITY OF MISSOURI-SYSTEM ORGANIZATIONAL CHART

UMR ORGANIZATIONAL CHART

UMR BOARD OF TRUSTEES

DIVISION AND DEPARTMENT HEADS/DIRECTORS LISTING

ALUMNI & CONSTITUENT ORGANIZATION PRESIDENTS

GENERAL FACULTY & COUNCIL GROUPS

INSTITUTIONAL AND SPECIALIZED ACCREDITATION

DEGREE PROGRAMS

CALENDAR

University of Missouri Mission Statement

The mission of the University of Missouri, as a land-grant university and Missouri's only public research and doctoral-level institution, is to discover, disseminate, apply, and preserve knowledge. It thereby stimulates learning by its students, and lifelong learning by Missouri citizens, and advances the health and well-being and the intellectual, cultural, social, and economic interests of the people of Missouri, the nation, and the world.

University of Missouri - Rolla

Campus Mission & Vision

The University of Missouri-Rolla, UMR, has a major responsibility for meeting Missouri's needs for engineering education. UMR offers residential programs with an emphasis on leadership development that include a full range of engineering and science degrees and complementary liberal arts degrees and programs.

UMR conducts research to advance knowledge, to provide essential support for graduate education, and to enhance undergraduate education. There is special emphasis on research in materials, manufacturing, infrastructure, geotechnical, and environmental engineering and science.

UMR assists in the economic development of the state and the nation with the transfer of the technology developed through its research programs.

(Approved by the Board of Curators, 07-24-97)

Educating Tomorrow's Leaders

Vision

The University of Missouri at Rolla is a leading member of the higher education system in Missouri and is dedicated to its role as a nationally prominent technological university. It is

- ◆ A university that is a primary source of leaders in their disciplines who are able to:
 - Identify and solve technical and societal problems;
 - Create, synthesize, and communicate knowledge;
 - Work effectively as team members in diverse environments; and
 - Adapt to change through life-long learning.
- ◆ A university whose faculty and staff are committed to excellence in teaching and learning and to student success.
- ◆ A university where faculty, staff and students conduct nationally competitive research to meet societal needs.
- ◆ A university that anticipates change and is recognized as a premier source of readily available knowledge, creativity and education and whose faculty, staff and students serve the needs of the society of which it is a part.
- ◆ A university committed to providing an environment that fosters the development of all members of the university community to their full potential.

A Brief History of UMR

The University of Missouri School of Mines and Metallurgy, which in 1964 became the University of Missouri-Rolla, was founded in 1870 as the “mechanic arts” component of Missouri’s response to the Morrill Act of 1862 and the land-grant movement of the late nineteenth century.

MSM, as it became known, was the first technological institution west of the Mississippi River and one of the first in the nation. MSM was Missouri’s response to the acute need for scientific and technical education in the burgeoning United States.

In inaugurating the School, President of the University of Missouri, Daniel Read stated its purpose:

“This school is to be a school both of science and of its applications: its purpose is to teach knowledge and art - first to know and then to do, and to do in the best manner.”

Early curricula were focused on the mining industry and its immediate technological needs, but by the 1920's courses of study included mining, civil, mechanical, electrical, and chemical engineering and chemistry, metallurgy, mathematics, physics, and geology.

The School expanded slowly in its first 50 years. The building of the campus reflected the steady growth of enrollment -- 107 students enrolled in 1874, when the first graduating class of three received their diplomas; total enrollment in 1920 was 393, with 59 diplomas awarded (57 B.S. degrees, 2 M.S.). Over the years, MSM graduates earned a wide reputation as competent practitioners, well-trained professionals who do their homework, and the School became a major source of technological talent.

In the time of World War II, enrollment was consistently above 500, and an increased focus on research was reflected in the rising number of graduate degrees: in 1940, 153 B.S. degrees and 6 M.S.

Graduate education and research began to assume an even greater role on the campus in the 1950's, as the nation emerged from World War II as the economic and scientific leader of the free world. Missouri saw the need to strengthen its infrastructure, and the School of Mines and Metallurgy became increasingly a technological university whose impact reached beyond the state and nation.

In 1964, recognizing its expanded nature and role, the name of the institution was changed to the University of Missouri at Rolla, soon to be altered to University of Missouri-Rolla. UMR, as it quickly came to be called, was one of four campuses of the newly reorganized and expanded University of Missouri.

The change from “school” to “university” involved three major changes in the programs of the campus. First, UMR’s curricula expanded to encompass the full range of engineering and scientific subjects. Degree programs in nuclear engineering, life sciences, and computer science were added. Second, offerings also included degrees in the liberal arts with an appropriate growth in the number and quality of faculty and courses. Third, graduate programs strengthened the science and engineering disciplines, and the commitment to research in all areas better enabled the campus to respond to Missouri’s needs. Originally a mining school and later an engineering school, the University of Missouri-Rolla has become a major technological university.

In the course of these metamorphoses the campus has been transformed from that of a rustic academy to a modern institution of science and engineering. To the older campus, built slowly over the first 95 years, have been added, beginning in the 1960's, a large number of new classroom and laboratory buildings and a new library and new performing arts center.

UMR’s students today, though predominantly from Missouri, come from all states of the nation and many foreign countries. MSM/UMR’s nearly 50,000 alumni can be found in every state of the union and more than 75 countries of the world. The impact of the campus now reaches around the globe.

MISSOURI SCHOOL OF MINES & METALLURGY UNIVERSITY OF MISSOURI - ROLLA

DIRECTORS, DEANS AND CHANCELLORS

Charles Penrose Williams	Director, 1871-77
Charles Edmund Wait	Director, 1877-88
William Holding Echols	Director, 1888-91
Elmo Golightly Harris	Director, 1891-93
Walter Buck Richards	Director, 1893-97
George E. Ladd	Director, 1897-07
Lewis Emmanuel Young	Director, 1907-13
Leon Ellis Garrett	Acting Director, 1913-15
Durward Copeland	Director, 1915
Austin Lee McRae	Director, 1915-20
Charles Herman Fulton	Director, 1920-37
William Reuel Chedsey	Director, 1937-41
Curtis L. Wilson	Dean, 1941-63
Merl Baker	Dean, 1963-64
	Chancellor, 1964-73
Dudley Thompson	Acting Chancellor, 1973-74
Raymond L. Bisplinghoff	Chancellor, 1974-76
Jim C. Pogue	Interim Chancellor, 1977-78
Joseph M. Marchello	Chancellor, 1978-85
John T. Park	Interim Chancellor, 1985-86
Martin C. Jischke	Chancellor, 1986-1991
John T. Park	Interim Chancellor, 1991-1992
	Chancellor, 1992-2000
Gary Thomas	Chancellor, 2000-present

GOVERNANCE OF THE INSTITUTION

The University of Missouri is a constitutionally established unit of the State of Missouri: "The general assembly shall adequately maintain a state university and such other educational institutions as it may deem necessary." (The Missouri Constitution of 1945, article IX, SS 9a, 9b) The Constitution also established a Board of Curators. "The government of the state universities shall be vested in a Board of Curators consisting of nine members appointed by the Governor by and with the advice and consent of the Senate." In 1994 House Bill Number 1139, Section 172.035 enacted the appointment of a student representative to the Board of Curators of the University of Missouri, appointed by the Governor, by and with the advice and consent of the Senate, to serve without vote. The Curators are given a wide range of power by statute, as summarized in the Collected Rules and Regulations of the University of Missouri.

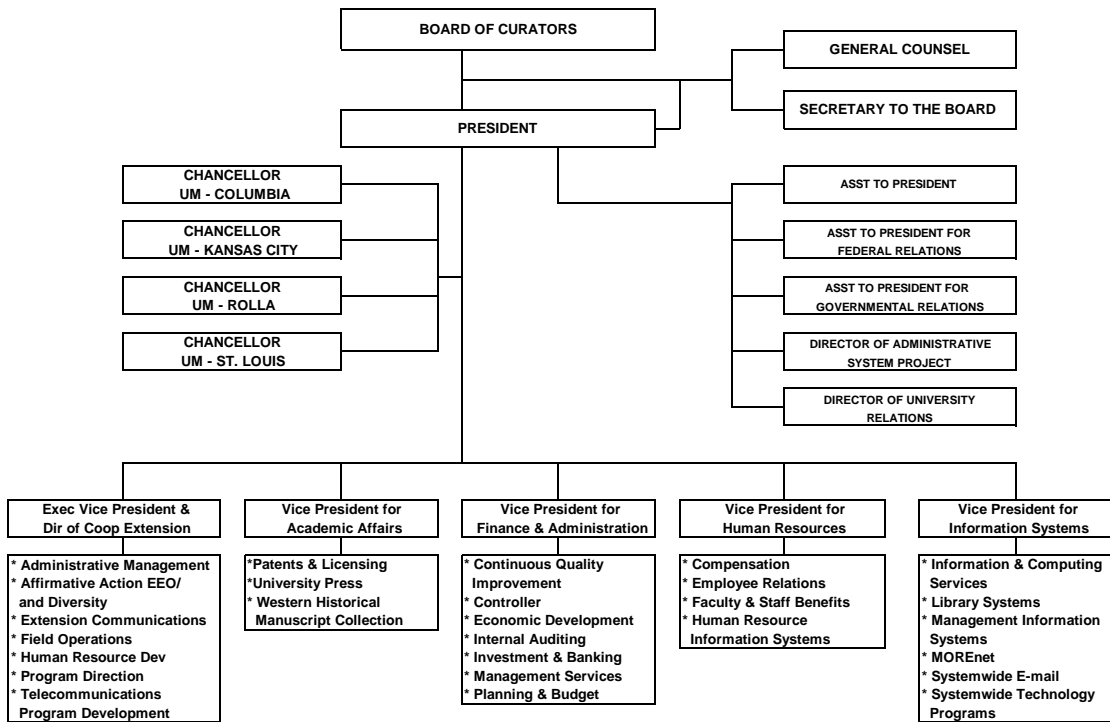
The University of Missouri-Rolla is one of four campuses which comprise the University of Missouri System. The Board of Curators employs the System Administration, which consists of the President of the University of Missouri, four vice-presidents, and various other administrative staff members. This group is responsible for implementing Board policy.

The State of Missouri also has a Coordinating Board for Higher Education (CBHE), established in 1974 to serve as a clearing-house for budget development and program coordination for all Missouri's public higher education. The Board of Curators is not subordinate to the CBHE but rather works with it to establish coordinated legislative requests for funding of higher education and to maintain a comprehensive program of higher education for the citizens of the state.

CURRENT MEMBERS OF THE BOARD OF CURATORS

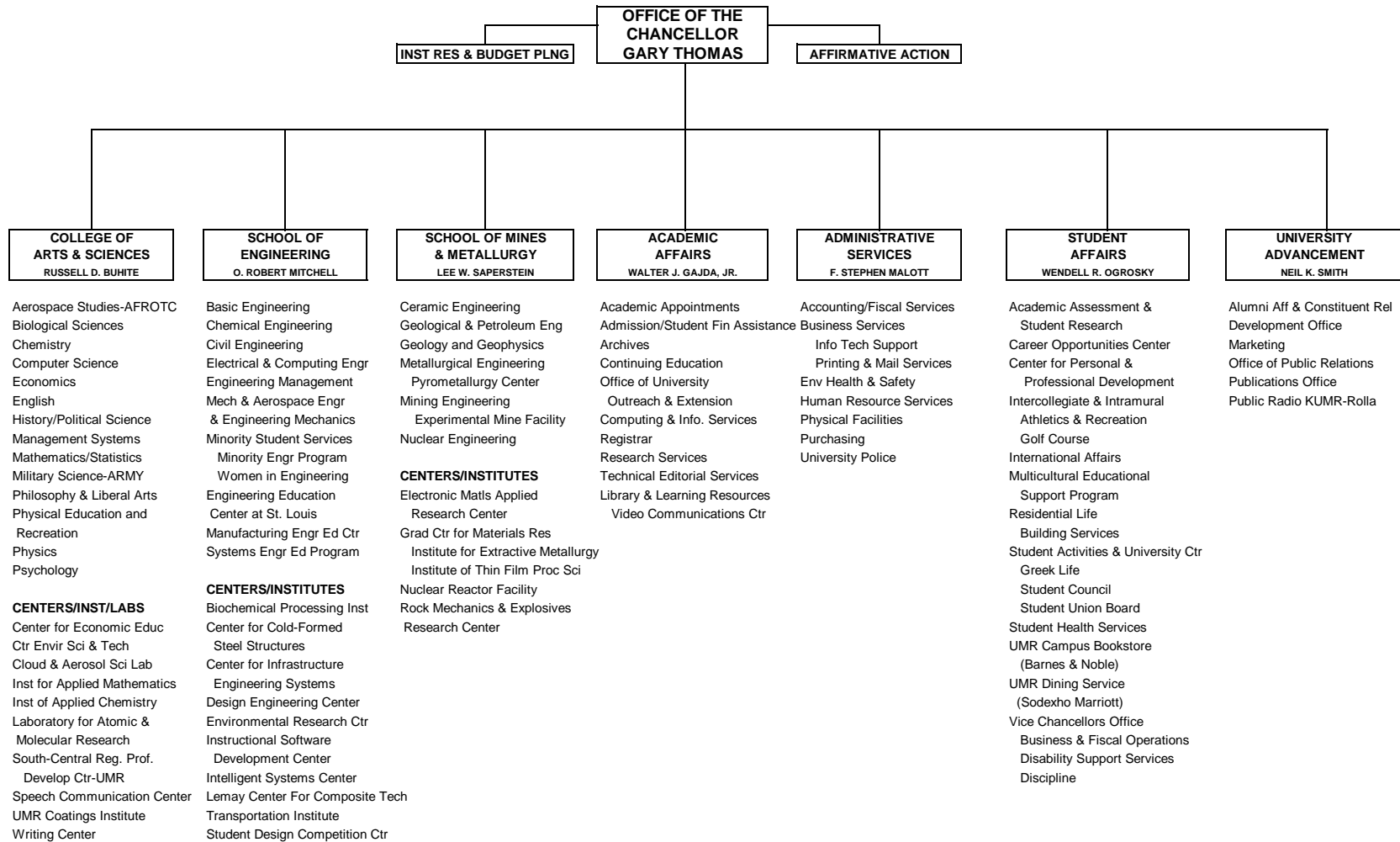
		Term Expires:
President:	Paul W. Steele (Chillicothe)	1-1-03
Vice President:	John A. Mathes (Sunset Hills)	1-1-03
Members:	Theodore C. Beckett (Kansas City)	1-1-01
	Paul T. Combs (Kennett)	1-1-01
	Dr. Hugh E. Stephenson, Jr. (Columbia)	1-1-01
	Dr. Malaika B. Horne (St. Louis)	1-1-03
	Mary L. James (Harrisonville)	1-1-05
	M. Sean McGinnis (Springfield)	1-1-05
	Connie Hager Silverstein (St. Louis)	1-1-05
Student Rep:	Stephen T. Sugg (UMC)	1-1-01

UNIVERSITY OF MISSOURI SYSTEM ORGANIZATIONAL STRUCTURE



General Counsel	Marvin E. "Bunky" Wright
Secretary to the Board	Kathleen M. Miller
President	Manuel T. Pacheco
Executive Vice President/ Director of Cooperative Extension	Ronald J. Turner
Vice President Academic Affairs	Stephen W. Lehmkuhle
Vice President Finance & Administration	James E. Cofer
Vice President for Human Resources	R. Kenneth Hutchinson
Vice President for Information Systems	Ralph H. Caruso, Jr.
Asst. to President	Philip Harrison
Asst. to President for State Governmental Relations	Jim Snider
Asst. to President for Federal Relations	Stephen C. Knorr
Director of Administrative Systems Project	Eileen Heveron
Director of University Relations	David R. Russell
Chancellor, UM-Columbia	Richard L. Wallace
Chancellor, UM-Kansas City	Martha Gilliland
Chancellor, UM-Rolla	Gary Thomas
Chancellor, UM-St. Louis	Blanche M. Touhill

UNIVERSITY OF MISSOURI - ROLLA ORGANIZATIONAL CHART



UNIVERSITY OF MISSOURI-ROLLA

BOARD OF TRUSTEES

The Board of Trustees has a three part mission of:

- (1) Consultancy: To counsel and advise the Chancellor on means to enhance the stature of the University.
- (2) Ambassadorship: To interpret the University's goals and programs to its various constituents. To promote the participation of Alumni and Friends in building and advancing the public image of UMR.
- (3) Sponsorship: To advance the objectives of the development program by identifying and securing financial support for the University.

Current Members of the Board of Trustees

President: Ms. Cindy Tang, (Platteville, WI)

Members: Mr. James Bertelsmeyer, (Tulsa, OK)
Mr. Robert Brackbill, (Dallas, TX)
Mrs. Norma Curby, (St. Louis, MO)
Mr. Robert Garvey, (Birmingham, AL)
Mr. Don Gunther, (Houston, TX)
Mr. Robert Keiser, (Dallas, TX)
Mr. John Mathes, (St. Louis, MO)
Mr. Ronald Miller, (Sapphire, NC)
Mr. Zebulun Nash, (Houston, TX)
Mr. Neil Smith, (Rolla, MO)
Mr. Richard Stegemeier, (Anaheim, CA)
Dr. Gary Thomas, (Rolla, MO)
Mr. Ralph Uthe, (Rochester Hills, MN)
Mr. Richard Vitek, (Brookfield, WI)
Mr. Theodore L. Wiese, (Memphis, TN)
Mr. Roy Wilkens, (Tulsa, OK)

DIVISION AND DEPARTMENT HEADS/DIRECTORS

CHANCELLOR AND DIVISION DIRECTORS

Chancellor
Vice-Chancellor, Academic Affairs
Vice-Chancellor, Administrative Services
Vice-Chancellor, Student & International Affairs
Vice-Chancellor, University Advancement
Dean, College of Arts & Sciences
Dean, School of Engineering
Dean, School of Mines & Metallurgy

Gary Thomas
Walter J. Gajda, Jr.
F. Stephen Malott
Wendell R. Ogrosky
Neil K. Smith
Russell D. Buhite
O. Robert Mitchell
Lee W. Saperstein

OFFICE OF THE CHANCELLOR

Asst. to Chancellor for Affirmative Action
Director, Institutional Research & Budget Planning

Lawrence C. George
Carol M. Heddinghaus

COLLEGE OF ARTS AND SCIENCES

Associate Deans

Undergraduate/Recruiting
Graduate

Lance Williams
Harvest Collier

Center/Institute/Program Directors (report to Dean)

Center for Environmental Science and Technology
Speech Communication Center
Management Systems
South-Central Regional Professional Development Ctr-UMR
Writing Center

Virgil Flanigan
W. Lance Haynes
Daniel St. Clair (Interim)
Doris Ridder
Linda Bergmann

Department Chairs/Center/Institute Directors

Aerospace Studies (Air Force ROTC)
Biological Sciences
Chemistry
 Institute for Applied Chemistry
 UMR Coatings Institute
Computer Science
Economics
 Center for Economic Education
English
History & Political Science
Mathematics & Statistics
 Institute of Applied Mathematics
Military Science (Army ROTC)
Philosophy & Liberal Arts
Physical Education
Physics
 Cloud and Aerosol Sciences Laboratory
 Lab for Atomic & Molecular Research
Psychology

Lt. Col. Patrick Giunta
Paula Lutz
Ekkehard Sinn
Frank D. Blum
Michael R. Van De Mark
Daniel C. St. Clair
Gregory Gelles
Linda Manning
Linda Bergmann (Interim)
Wayne Bledsoe
Leon M. Hall
Leon M. Hall
Lt. Col. James Stone
Richard Miller
Sarah Preston
Paul Parris
Donald Hagen
Don H. Madison
Ronald T. Kellogg

DIVISION AND DEPARTMENT HEADS/DIRECTORS (CONTINUED)

SCHOOL OF ENGINEERING

Associate Deans

Research and Graduate Affairs
Undergraduate Affairs

Lokesh R. Dharani
Jerry R. Bayless

Center/Institute/Program Directors (report to Dean)

Center for Infrastructure Engineering Studies
Lemay Composite Center
University Transportation Center
Engineering Education Center
Intelligent Systems Center
Manufacturing Engineering Education Program
Minority Student Services
Student Design Competition Center
Systems Engineering Education Programs

Antonio Nanni
Susan Murray
Antonio Nanni
Victor Birman
Vittal S. Rao
Frank Liou
Floyd Harris
Douglas Carroll
Cihan Dagli

Department Chairs/Center/Institute Directors

Basic Engineering
Instructional Software Development Center
Chemical Engineering
Biochemical Processing Inst
Civil Engineering
Cold-Formed Steel Structures
Environmental Research Center
Transportation Institute
Electrical and Computer Engineering
Engineering Management
Design Engineering Center
Mech & Aero Engr & Engr Mechanics

D. Ronald Fannin
Robert Davis
Douglas K. Ludlow
Athanasios I. Liapis
William P. Schonberg
Wei-Wen Yu
Craig Adams
Gary Spring
E. Keith Stanek
Henry Wiebe
K. M. Ragsdell
Ashok Midha

SCHOOL OF MINES & METALLURGY

Associate Deans

Instruction
Research

Ronald A. Kohser
Nicholas Tsoulfanidis

Center/Institute Directors (report to Dean)

Electronic Materials Applied Research Center
Grad Ctr for Materials Research
Institute of Extractive Metallurgy
Institute of Thin Film Processing Science
Nuclear Reactor
Rock Mechanics & Explosives Research Ctr

Harlan U. Anderson
Wayne Huebner
Thomas J. O'Keefe
James O. Stoffer
Akira Tokuhiro
David A. Summers

Department Chairs/Center/Institute Directors

Ceramic Engineering
Geological and Petroleum Engineering
Geology and Geophysics
Metallurgical Engineering
Pyrometallurgy Center
Mining Engineering
Experimental Mine Facility
Nuclear Engineering

Richard Brow
Leonard Koederick
Jay Gregg
John L. Watson
David G. Robertson
Larry Grayson
Ronald G. Robison (Supervisor)
Arvind S. Kumar

DIVISION AND DEPARTMENT HEADS/DIRECTORS (CONTINUED)

ACADEMIC AFFAIRS

Directors/Department Heads

Admission & Student Financial Assistance	Martina Hahn
Student Financial Assistance	Robert W. Whites
Computing & Information Services	David W. Dearth
Administrative Data Processing	Art Brooks
Telecommunications	David W. Dearth
Continuing Education	Sue Turner (Manager)
Library & Learning Resources	Jean S. Eisenman
Video Communications Center	Ross Haselhorst (Manager)
Registrar	Laura Stoll
Research Services	Kathryn L. Sheppard (Coordinator)
Technical Editorial Services	Michael E. McKean

Center/Institute Directors

Office of University Outreach & Extension	John Sheffield
---	----------------

ADMINISTRATIVE SERVICES

Directors/Department Heads

Accounting/Fiscal Services	Andrew Lamar
Business Services	Randy V. Stoll
Environmental Health & Safety	Steve Nelson
Centralized Printing & Mail Services	Robert A. Blaylock
Human Resource Services	Phyllis McCoy, Interim
Physical Facilities	Marvin L. Patton
Purchasing	Randy V. Stoll
University Police	William C. Bleckman

STUDENT AFFAIRS

Directors/Department Heads

Academic Assessment/Student Research	Carl F. Burns
Assistant to the Vice Chancellor	Denise Schlake
Career Opportunities Center	Jamie Archer
Center for Personal & Professional Development	Debra Robinson
Intercollegiate and Intramural Athletics and Recreation	Mark Mullin
International Affairs	Jeanie Smallwood
Multicultural Educational Support Program	Toni Scott
Residential Life	James Murphy
Student Activities/University Center	Mark Potrafka
Student Affairs Business/Fiscal Operations	Kevin Brady (Manager)
Student Health Service	Dwight D. Deardeuff, M.D.
UMR Bookstore (Barnes & Noble)	Kim Haney (Manager)
UMR Food Service (Sodexo Marriott)	Don Green

DIVISION AND DEPARTMENT HEADS/DIRECTORS (CONTINUED)

UNIVERSITY ADVANCEMENT

Directors/Department Heads

Alumni Affairs & Constituent Relations

Marketing

Office of Public Relations

Publications Office

Development Office

Major Gifts

Major Gifts

Major Gifts

Major Gifts

Major Gifts

Public Radio KUMR-Rolla

Donald G. Brackhahn

Open Position

Andy Careaga (Manager)

Rebecca Frisbee (Manager)

Phil Campbell

Anne Weller

Greg F. Harris

Sandra Ogrosky

Julie Turley

Mary Bird

Janet Woodward

ALUMNI & CONSTITUENT ORGANIZATION PRESIDENTS 2000/01

MSM-UMR Alumni Association
UMR Board of Trustees
Corporate Development Council
Order of the Golden Shillelagh
Academy of Chemical Engineers
Academy of Civil Engineers
Academy of Electrical Engineers
Academy of Mechanical Engineers
Academy of Mines & Metallurgy
African-American Alumni Recruitment &
Retention Committee
Athletic Booster Club
UMR Parents Association

Jim Bertelsmeyer, ChE '66
Cynthia Tang, Econ '85
Ralph Uthe, ME '68
Ron Miller, ChE '64
Art Helwig, Che '50
Bob Berry, CE '72
Michael Apprill, E&CE '70
Don Wojtkowski, ME '69
Gerald W. Bersett, MetE '65
Henry E. Brown, CE '68

Nancy Brackhahn, Hon '96
Barbara Robertson

Alumni Association Sections:

Air Capital
Alaska
Arkansas
Ark-La-Tex
Austin/San Antonio
Bay Area
Central Ozarks
Chicago
Cincinnati/Dayton
Dallas/Ft. Worth
Georgia
Heartland
Houston
Kansas City
Lincolmland
Maryland/Virginia/DC
Miami
Mid-Missouri
Middle Tennessee
Miner Music
Motor City
New Orleans
Northeast Ohio
Northern Alabama
Oklahoma
Pacific Northwest
Phoenix
Rocky Mountain
St. Louis
San Diego
Southern California
Springfield, MO
Tucson
West Florida
West Texas

Jarrold Grant, AE '98
John W. Hentges, ME '89
Charles Germer, CE '55
Kenny Cochran, MinE '83
Don Burzen, ME '70
Kami Cozort CE '85
J. Randy Verkamp, E Mgt '72
Kerry Knott, ChE '96
Millard "Skip" Dunham, ME '85
Warren Unk, EE '91
David R. Ziegler, MinE '85
Donald L. Fuller, EE '66
Nicole Talbot, ChE '77
Craig Koenig, E&CE '86
Jerry Hirlinger, EMgt '86
Doug Hughes E&CE '63
Open Position
Bob Sfredo, CE '58
Christina Cook, CE '95
Thomas Rogge, EE '93
Robert Seaman, ME '69
Open Position
Hugh Kind, MetE '76
John P. Dunbar, ME '84
Jeanne Barkley, ChE '96
Steve Wright, ME '68
Open Position
Clarence Ellebracht, Jr., CE '64
Jennifer Diskin, MetE '91
Open Position
Open Position
Roddy Jack Rogers, CE '81
William Hallett, MetE '55
John R. VanNort, CE '50
J. Michael Party, Geol. '78

GENERAL FACULTY & COUNCIL GROUPS

GENERAL FACULTY

The General Faculty consists of all full-time staff members holding the rank of instructor or above, the President, the Chancellor, the Vice Chancellor for Academic Affairs, the Deans, the Registrar, Director of Admissions, Director of the Library, and other persons who may be elected. The General Faculty is responsible for academic programs concerning the campus and for matters affecting the welfare of the institution, including, but not limited to, academic standards and courses for instruction and general standards to be met by educational, research, and service programs.

OFFICERS: Chair	Gary Thomas	Chancellor
Vice Chair	Donald D. Myers	President, Academic Council
Secretary	Laura Stoll	Registrar
Parliamentarian	Todd H. Hubing	Parliamentarian, Academic Council

ACADEMIC COUNCIL

The Academic Council is the legislative and policy making body of the faculty. The Council carries out the functions and responsibilities assigned to it by the General Faculty and considers matters referred to it by the Board of Curators, the President of the University, the Chancellor, and members of the faculty. Representatives to the Academic Council are elected by the departments (one representative/10 full-time faculty members).

OFFICERS: President	Donald D. Myers
President-Elect	Ralph W. Wilkerson
Secretary	Leonard F. Koederitz
Parliamentarian	Todd H. Hubing

STAFF COUNCIL

The University of Missouri - Rolla Staff Council's purpose is to provide two-way communication between UMR employees and the administration. All employees with non-academic titles and no academic appointment are members of the Staff Council. They are represented by sixteen of their peers, proportionately by employment group numbers, on the Staff Council Committee.

OFFICERS: Chair	Greg Harris
Secretary/Treasurer	Cindy Loughridge

STUDENT COUNCIL

The Student Council provides the mechanism for discussion and debate whereby all student body members may have a formal voice in campus affairs. Membership of the Council is composed of representatives from organizations approved by the Student Council for representation and from representatives of the unaffiliated students. The Council may petition the faculty on various matters, and therefore, serves as a very important forum of student opinion. The Student Council also provides funds (from student fees) for recognized campus organizations and sponsors activities that contribute to the welfare of the entire student body.

OFFICERS: President	Cody May
Vice President/External	Joseph Maul
Vice President/Internal	Ben Butler
Recorder	Bo Bracey
Treasurer	Jo Trujillo

Institutional and Specialized Accreditation

	<u>Initial Accreditation</u>
INSTITUTIONAL ACCREDITATION	
North Central Association of Colleges and Schools	1913
SPECIALIZED ACCREDITATION	
Accreditation Board for Engineering and Technology (ABET)	
Aerospace Engineering	1973
Ceramic Engineering	1936
Chemical Engineering	1951
Civil Engineering	1936
Electrical Engineering	1936
Engineering Management	1979
Geological Engineering	1973
Mechanical Engineering	1950
Metallurgical Engineering	1936
Mining Engineering	1936
Nuclear Engineering	1960
Petroleum Engineering	1941
Computer Science Accreditation Commission/Computing Sciences Accreditation Board (CSAC/CSAB)	
Computer Science	1986

Degree Programs, Emphasis Areas and Minors

University of Missouri-Rolla

(Degree programs are listed in capitals. Emphasis areas are lower case subheads followed by degree abbreviation if restricted to that degree.)

Aerospace Engineering (BS,MS,PhD) MI

Applied Mathematics (BS,MS) MI

Actuarial Science (BS)
Algebra/Discrete Mathematics (BS)
Applied Analysis
Computational Mathematics
Statistics

Biological Sciences (BS) MI

Ceramic Engineering (BS,MS,PhD,DE)

Chemical Engineering (BS,MS,PhD,DE)

Biochemical Engineering (BS)

Chemistry (BS,MS,MST,PhD) MI

Biochemistry (BS)
Polymer & Coatings Science (BS)
Pre-Medicine Chemistry (BS)

Civil Engineering (BS,MS,PhD,DE)

Construction
Environmental and Sanitary
Fluid Mechanics & Hydraulics
Geotechnical Engineering
Hazardous Waste Engineering
& Science (MS)
Public Works (MS)
Structural Analysis & Design
Transportation & Planning

Computer Engineering (BS,MS,PhD)

Computer Science (BS,MS,PhD) MI

Computer Organization (MS)
Computer Systems and Language (MS)
Information Systems (MS)
Numerical Analysis (MS)
Operations Research (MS)

Earth Sciences (MST)

Economics (BA,BS) MI

Economics/Business (BS)

Electrical Engineering (BS,MS,PhD,DE)

Circuits
Communications-Signal Processing
Computer Engineering
Control
Electromagnetics
Electronics
Power
Solar Energy (MS)

Engineering Management (BS,MS,PhD)

Industrial Engineering (BS)
Management of Technology (BS)
Manufacturing Engineering (BS)
Packaging Engineering (BS)
Public Works (MS)
Quality Engineering (BS)

Engineering Mechanics (MS,PhD)

English (BA)

Environmental Engineering (MS)

Geological Engineering(BS,MS,PhD,DE) MI

Engineering Geology & Geotechnics (BS)
Environmental Protection &
Hazardous Waste Mgt (BS)
Groundwater Hydrology
& Contaminant Transport (BS)
Petroleum, Energy and Natural Resources
(BS)
Quarry Engineering (BS)
Hazardous Waste Engineering & Science
(MS)

Geology and Geophysics (BS,MS,PhD)

Exploration Geochemistry (MS,PhD)
Exploration Geophysics (MS,PhD)
Geochemistry (BS)
Geology (BS)
Geophysics (BS)
Groundwater & Environmental
Geochemistry (BS)
Petroleum Geology (BS)

Continued
Degree Programs, Emphasis Areas and Minors
University of Missouri-Rolla

(Degree programs are listed in capitals. Emphasis areas are lower case subheads followed by degree abbreviation if restricted to that degree.)

History (BA) MI

Management Systems (BS)

Business
Finance
Human Relations
International Affairs
Nonprofit Sector
Public Sector

Manufacturing Engineering (MS,ME)

Mathematics (MST,PhD) MI

Analysis (PhD)
Differential and Functional Equations (PhD)
Statistics (PhD)

Mechanical Engineering (BS,MS,PhD,DE)

Aerospace Engineering (PhD,DE)
Control Systems
Energy Conversion
Environmental Systems
Instrumentation
Manufacturing Processes
Materials Science
Mechanical Design and Analysis
Thermal Science

Metallurgical Engineering (BS,MS,PhD)

Extractive Metallurgy (BS)
Manufacturing Metallurgy (BS)
Physical Metallurgy (BS)

Mining Engineering (BS,MS,PhD,DE)

Explosives Engineering (BS)
Quarry Engineering (BS)

Nuclear Engineering (BS,MS,PhD,DE) MI

Petroleum Engineering (BS,MS,PhD,DE) MI

Philosophy (BA) MI

Physics (BS,MS,MST,PhD) MI

Applied Physics (BS)
Geophysics (BS)

Psychology (BA,BS) MI

Systems Engineering (MS)

Teacher Education Program
(Secondary Teacher Certificate)

Minors (in addition to those designated MI above)

Accounting and Finance
Art
Communication Studies
Film and Literature
French
Geology
German
Industrial/Organizational Psychology
Leadership Communication
Literature
Literature and Film
Literature and Science
Materials
Military Science
Music
Political Science
Russian
Sociology
Spanish
Technical Writing
Writing

CALENDAR

University of Missouri-Rolla

WINTER (SPRING) SEMESTER 2001

Spring Semester opens 7:30 a.m.	Thursday	11 January
Student Registration 8:30 a.m.-3:00 p.m.	Thursday	11 January
Classwork begins 7:30 a.m.	Tuesday	16 January
Martin Luther King, Jr. Holiday	Monday	15 January
Mid-semester	Saturday	10 March
Spring Recess begins 7:30 a.m.	Thursday	15 March
Spring Recess ends 7:30 a.m.	Monday	19 March
Spring Break begins 7:30 a.m.	Sunday	25 March
Spring Break ends 7:30 a.m.	Monday	2 April
Last Class Day	Friday	11 May
Reading Day	Saturday	12 May
Final Examinations begin 8:00 a.m.	Monday	14 May
Final Examinations end 6 p.m.	Friday	18 May
Spring Semester closes 6 p.m.	Friday	18 May
May Commencement	Saturday	19 May

SUMMER SESSION 2001 *

Summer Session opens 7:30 a.m.	Monday	11 June
Student registration 8:30 a.m.-3:00 p.m.	Monday	11 June
Class work begins 7:30 a.m.	Tuesday	12 June
Independence Day Holiday	Wednesday	4 July
Summer Session closes 12:30 noon	Saturday	4 August

FALL SEMESTER 2001

International Student Orientation	Tuesday	7 August
Fall Semester opens 7:30 a.m.	Sunday	12 August
Freshmen Orientation	Sunday	12 August
Transfer Student Orientation	Wednesday	15 August
Student Registration 8:30 a.m. - 3:00 p.m.	Thursday	16 August
Class work begins 7:30 a.m.	Monday	20 August
Labor Day Holiday	Monday	3 September
Mid-Semester	Saturday	13 October
Thanksgiving Vacation begins 7:30 a.m.	Wednesday	21 November
Thanksgiving Vacation ends 7:30 a.m.	Monday	26 November
Last Class Day	Friday	7 December
Reading Day	Saturday	8 December
Final Examinations begin 8:00 a.m.	Monday	10 December
Final Examinations end 6:00 p.m.	Friday	14 December
Fall Semester closes 6:00 p.m.	Friday	14 December
December Commencement	Saturday	15 December

* The summer sessions on the Rolla campus are of variable length.
Registration times and dates for specific sections to be announced.