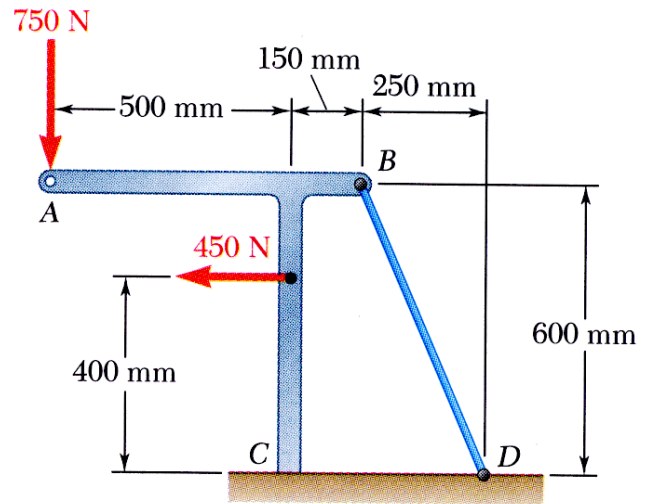
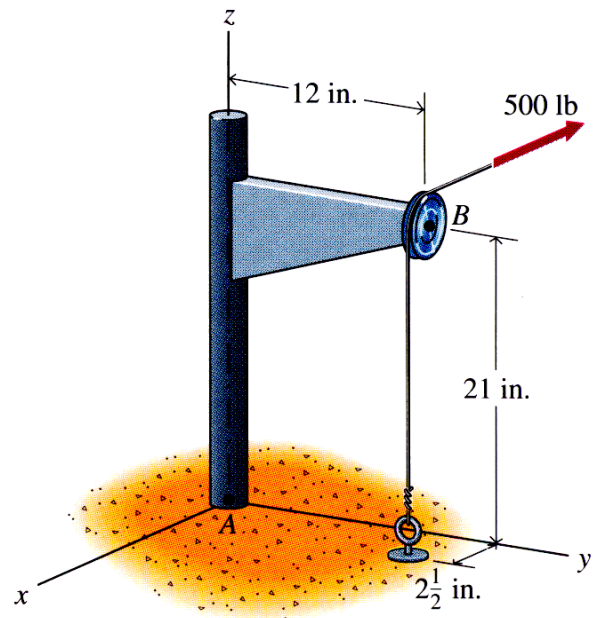


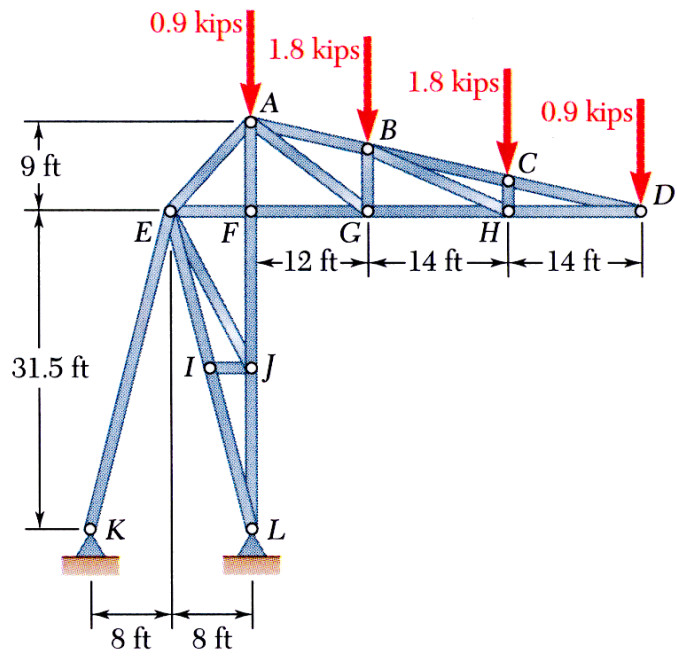
1. Knowing that the tension in wire BD is 1300 N, determine the reaction at the fixed support C of the frame shown.



2. A post and bracket is used to support a 2.5"-diameter pulley. A cable passing over the pulley transmits a 500-lb load. Determine the reaction at support A of the post.



3. A stadium roof truss is loaded as shown. Determine the force in members AE , EF , EJ , IJ , and JL .



4. Members ABC and CDE are pin-connected at C and supported by four links. For the loading shown, determine the force in each link.

