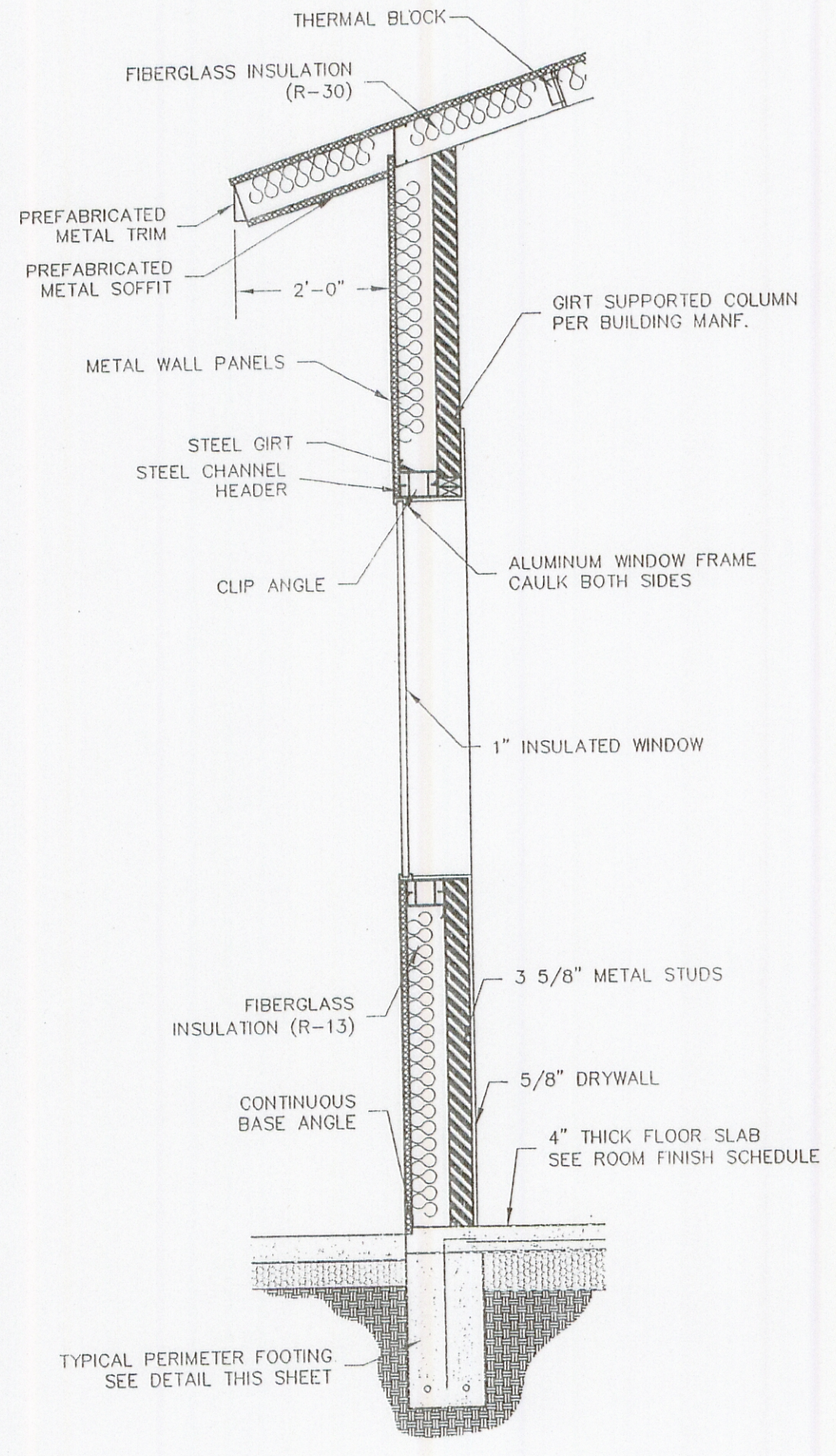
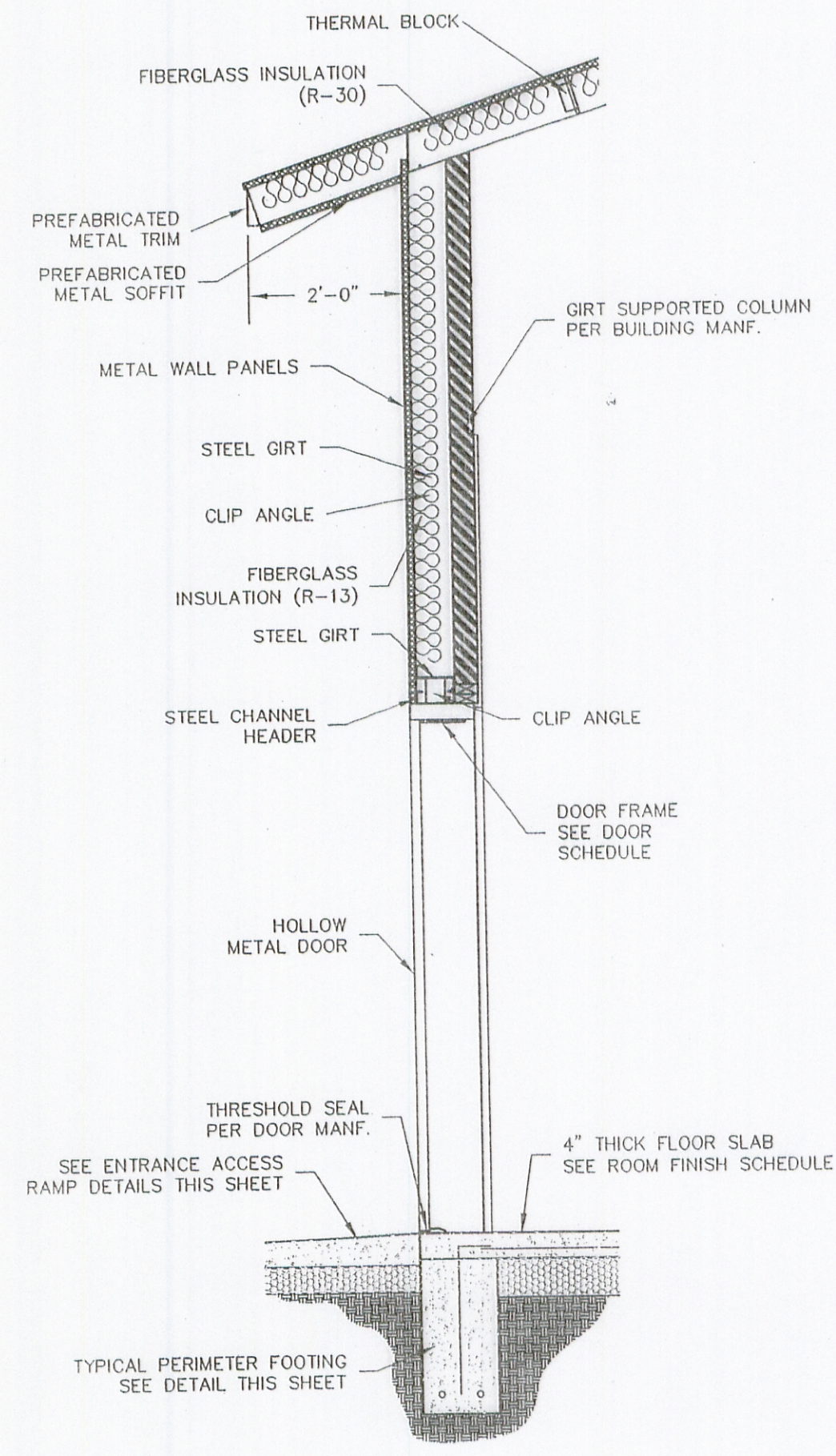


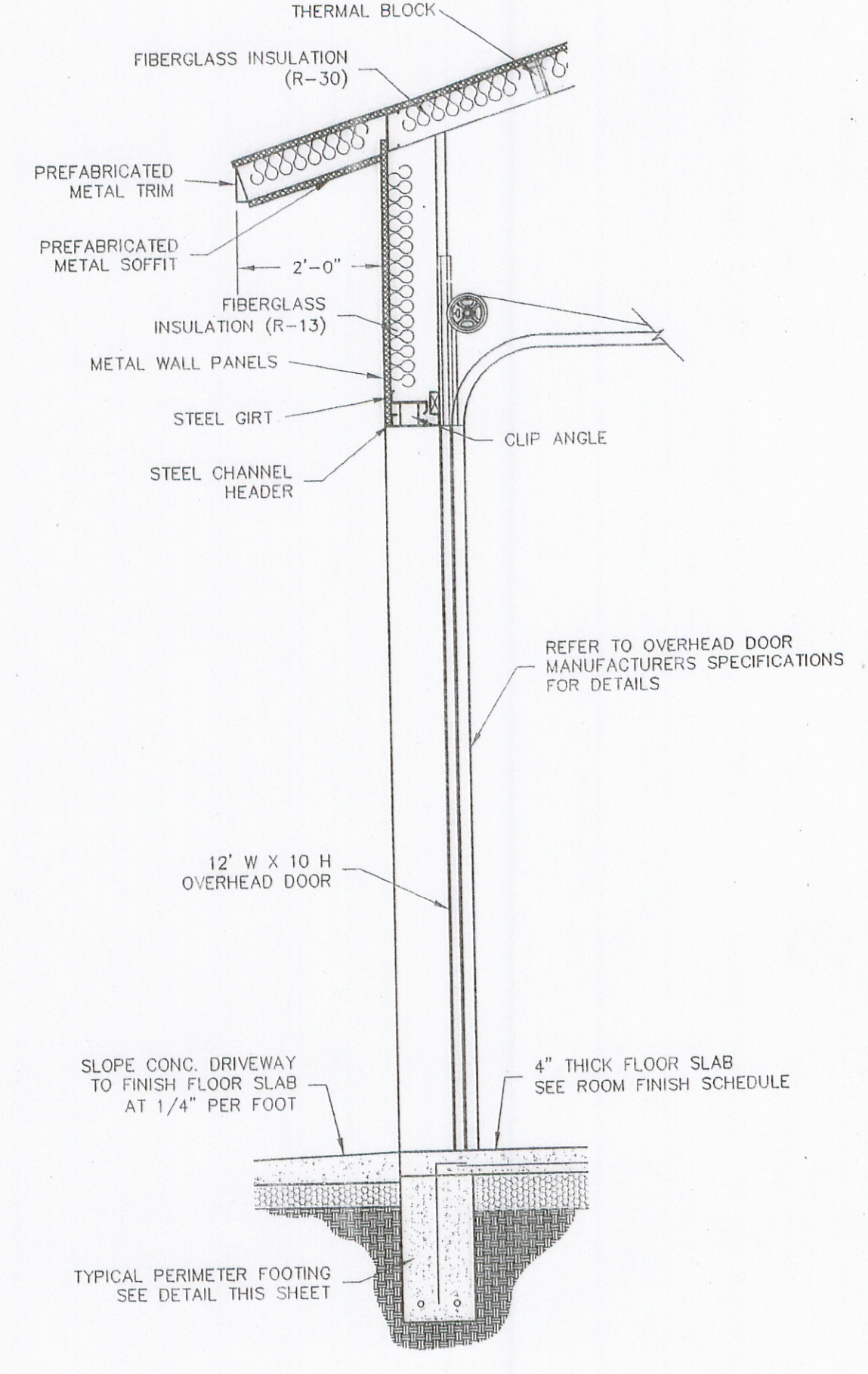
1  
4 TYPICAL EXTERIOR WALL W/ FRAME  
SCALE: N.T.S.



2  
4 TYPICAL EXTERIOR WALL W/ WINDOW  
SCALE: N.T.S.



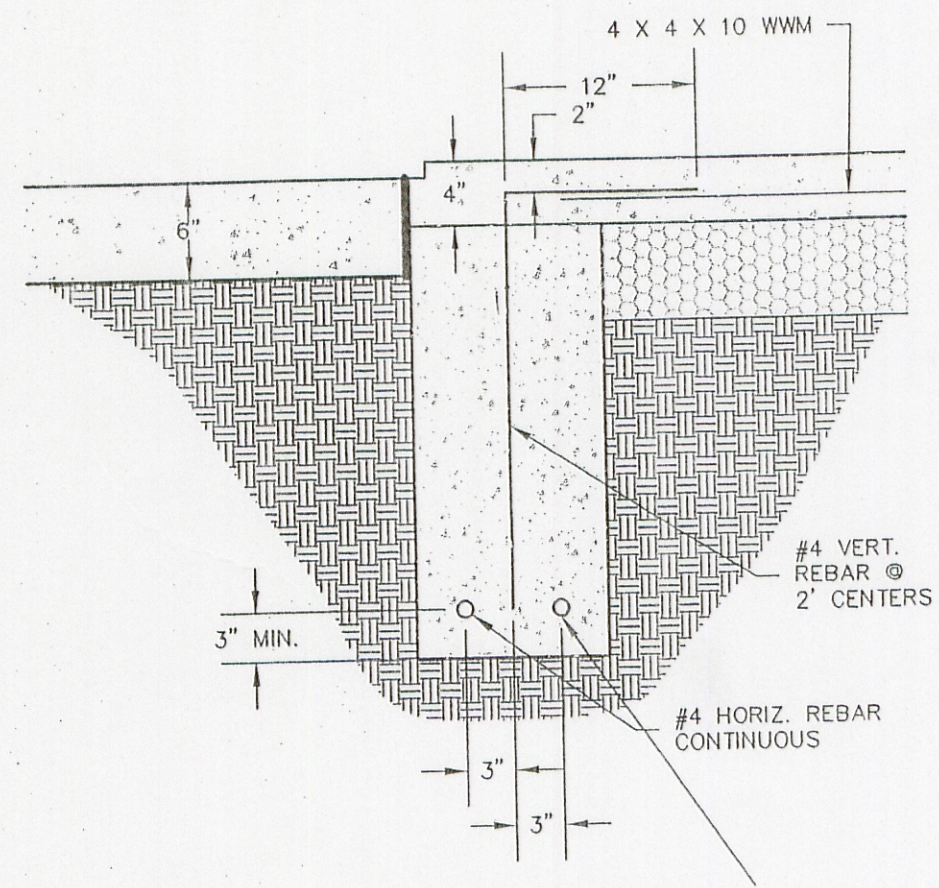
3  
4 TYPICAL EXTERIOR WALL W/ DOOR  
SCALE: N.T.S.



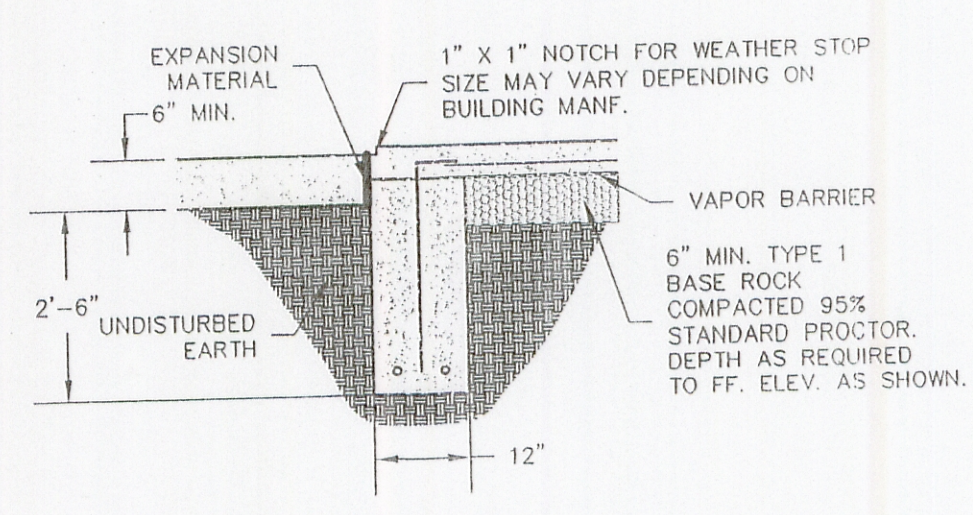
4  
4 TYPICAL EXTERIOR WALL W/ OVERHEAD DOOR  
SCALE: N.T.S.

**WALLS NOTE:**  
EXTERIOR WALLS: 3 5/8" METALS STUDS W/ R-13 FIBERGLASS INSULATION W/ METAL PANEL EXTERIOR AND 5/8" DRYWALL INTERIOR.

**NOTE:**  
ACTUAL FOUNDATION DIMENSIONS AND REINFORCEMENT SHALL BE PROVIDED BY THE BUILDING MANUFACTURER'S ENGINEER PER SPECIFICATION 13.120



REBAR REINFORCEMENT DETAIL  
SCALE: N.T.S.



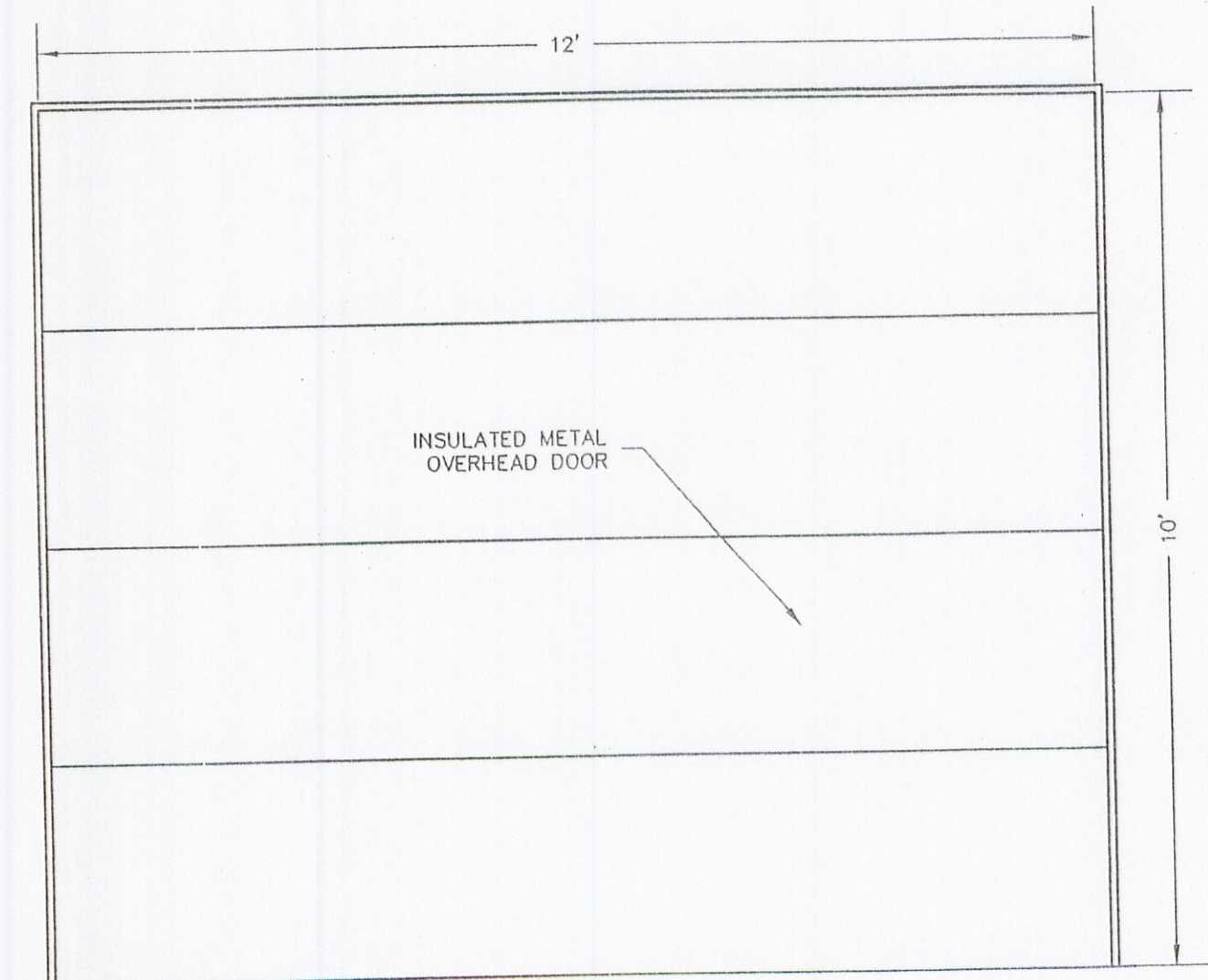
TYPICAL PERIMETER FOOTING  
SCALE: N.T.S.

ROOM FINISH SCHEDULE						
ROOM	FLOOR COVERING	BASE-4"	WALLS	CEILING	CEILING HT.	REMARKS
GARAGE	CONCRETE SEAL	NONE	5/8" DRYWALL - KNOCKDOWN TEXTURE - PAINT, LATEX	NONE	-	

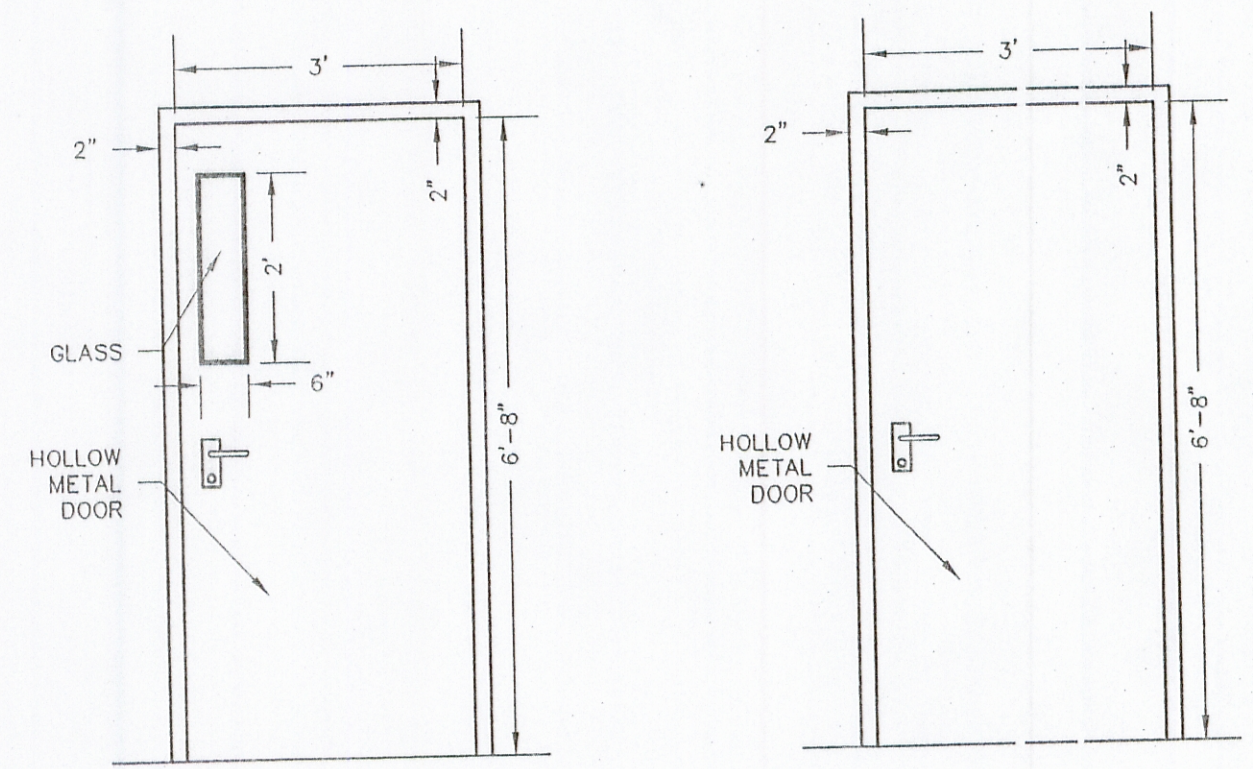
NOTE: FLOOR COVERING, DRYWALL PAINT COLORS AND ACOUSTIC CEILING TILE SHALL BE DETERMINED BY OWNER.

DOOR AND FRAME SCHEDULE								
MK	SIZE	DOOR			FRAME			REMARKS
		TYPE	MATERIAL	GLAZING	TYPE	MATERIAL	HEAD/JAMB/THRES	
①	3' x 6' 1/4 x 3/4	A	HOL. MTL.	NONE	A	HOL. MTL.	1 1 1	INSL. DOOR
②	10' x 12' x 1/2	A	HOL. MTL.	NONE	A	HOL. MTL.	1 1 1	INSL. DOOR

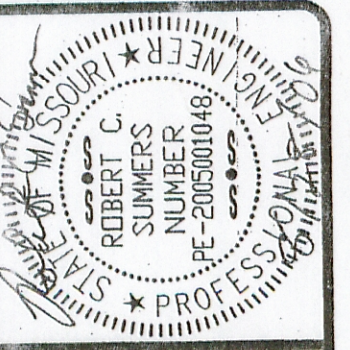
DOOR HARDWARE TO BE COMMERCIAL GRADE LEVER, YALE OR APPROVED EQUAL.



OVERHEAD DOOR ELEVATION  
SCALE: N.T.S.



DOOR TYPES  
SCALE: N.T.S.



2415 Carter Lane, Suite 105  
Poplar Bluff, MO 63901  
(P) 573-441-0808  
www.schutzengineering.com

Poplar Bluff Main Office  
4800 West Boulevard  
Poplar Bluff, MO 63901  
(P) 573-686-0806



Schutz Engineering Services, Inc.  
Civil Engineering - Land Surveying - Materials Testing

CAMELOT ESTATES SEWER  
DISTRICT OF CAMDEN COUNTY  
CAMDEN COUNTY, MISSOURI

OFFICE BUILDING  
DETAILS  
Designed by: RCS  
Checked by: RCS/ST  
Project: CAMELOT/DETAILS