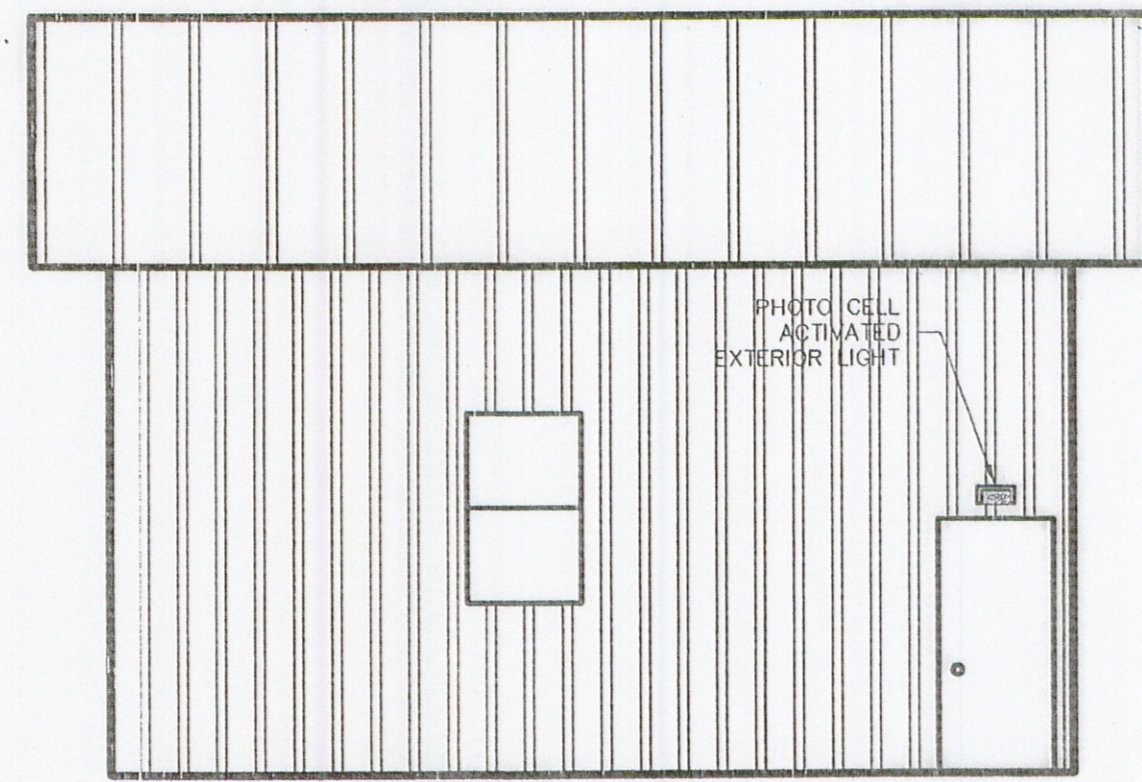
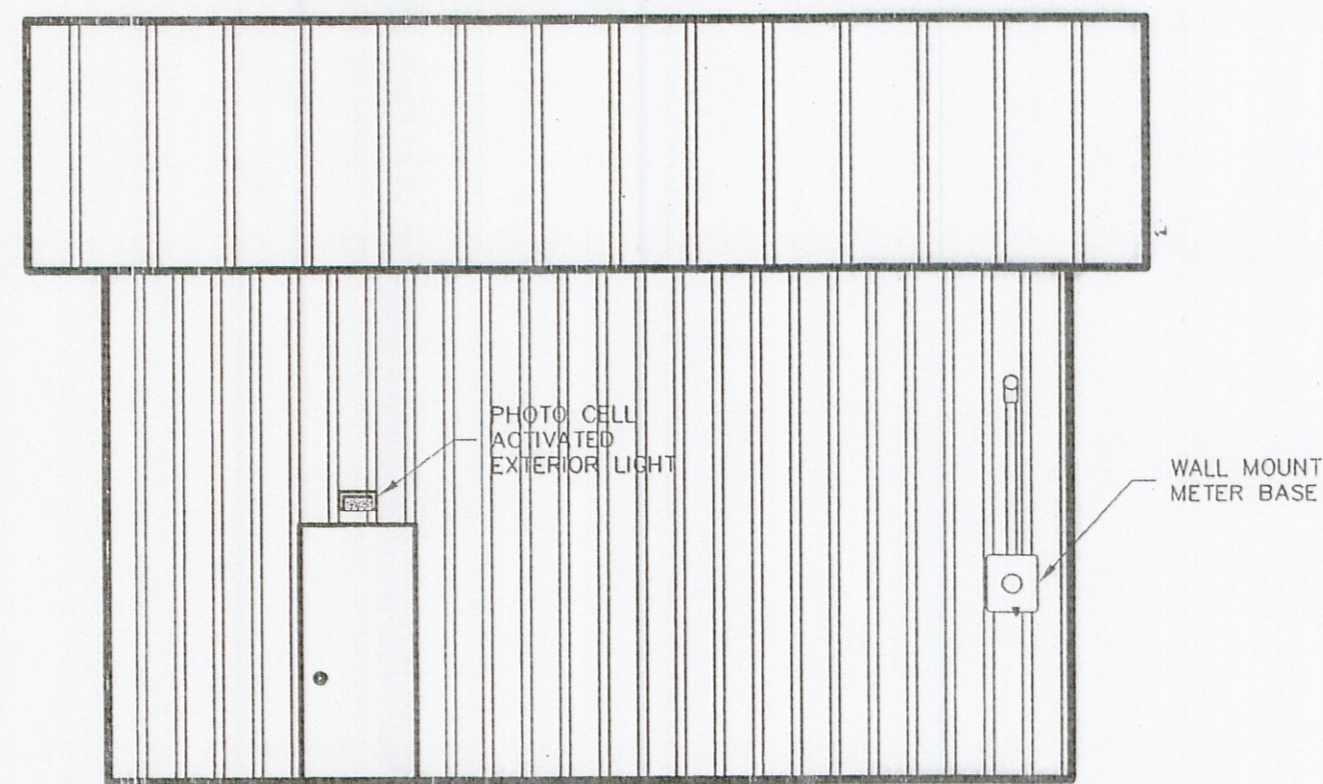
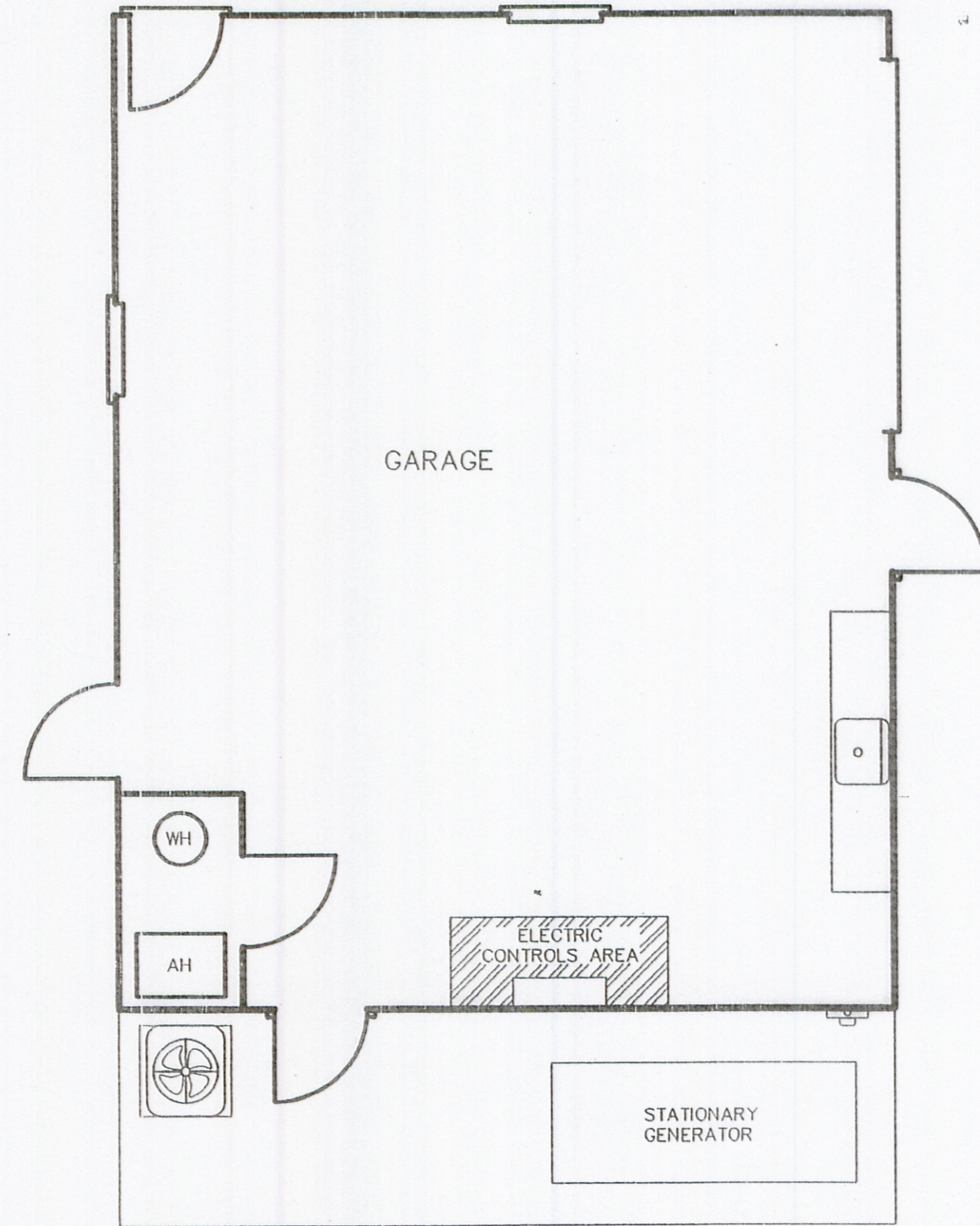


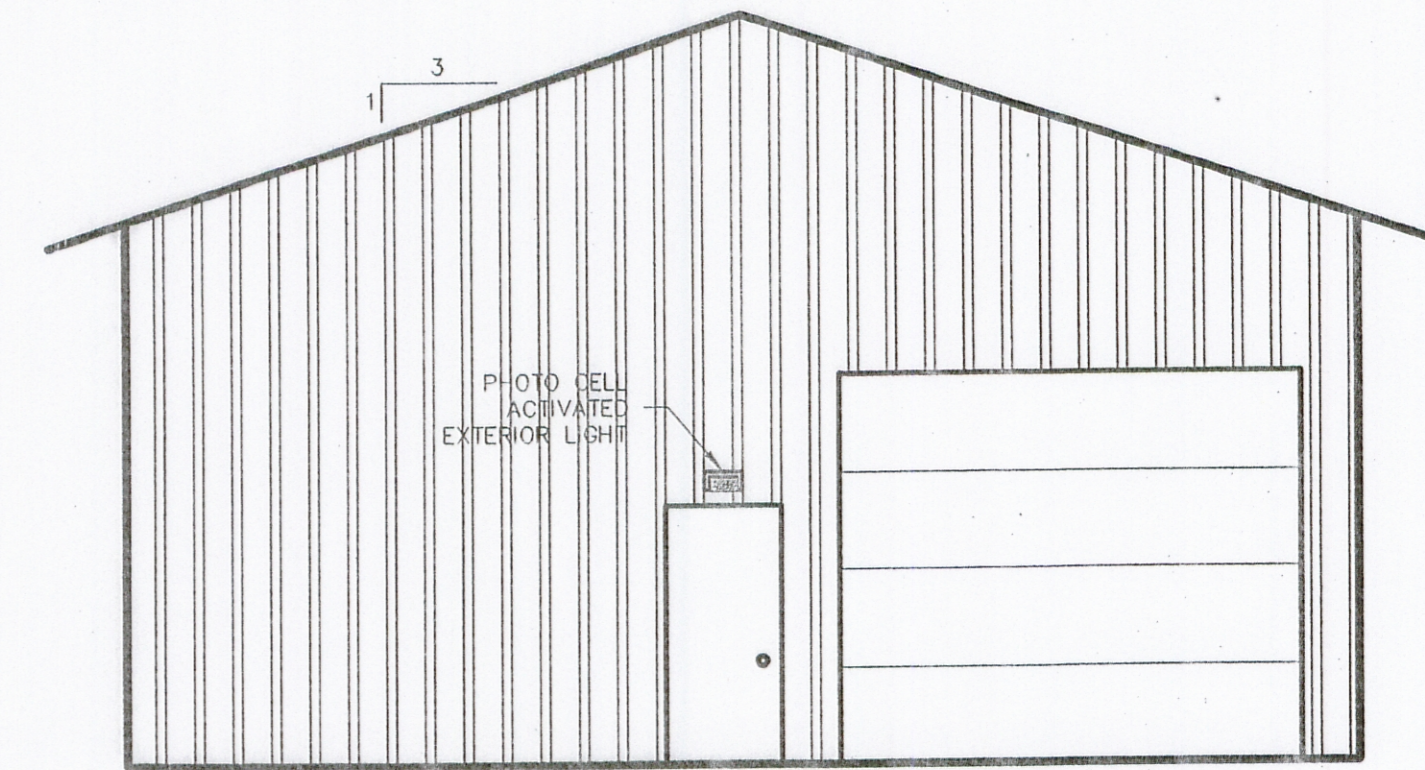
SOUTH ELEVATION
SCALE: 1" = 5'



EAST ELEVATION
SCALE: 1" = 5'



WEST ELEVATION
SCALE: 1" = 5'



NORTH ELEVATION
SCALE: 1" = 5'



Revisions:

Columbia
2415 Center Lane
Columbia, MO 65201
(P) 573-441-0806

Latice of the Ozarks
2821 Parkway
Columbia, MO 65205
(P) 573-302-4606

Poplar Bluff Main Office
215 W. Main St.
Poplar Bluff, MO 63901
(P) 573-696-0806
www.schultzengineering.com



Schultz Engineering Services, Inc.
Civil Engineering - Land Surveying - Materials Testing

**CAMELOT ESTATES SEWER
DISTRICT OF CAMDEN COUNTY**

CAMDEN COUNTY, MISSOURI

**OFFICE BUILDING
ELEVATIONS**

05-24-2016
Designed by: RCS
Checked by: RCS
Project #: 210367
File: 210367-CAMELOT/DETAILS

Submitted by:
Field Book:
Drawn by: ALA
Land Desktop

SHEET: