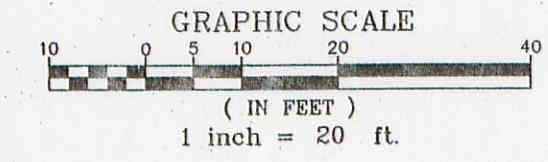
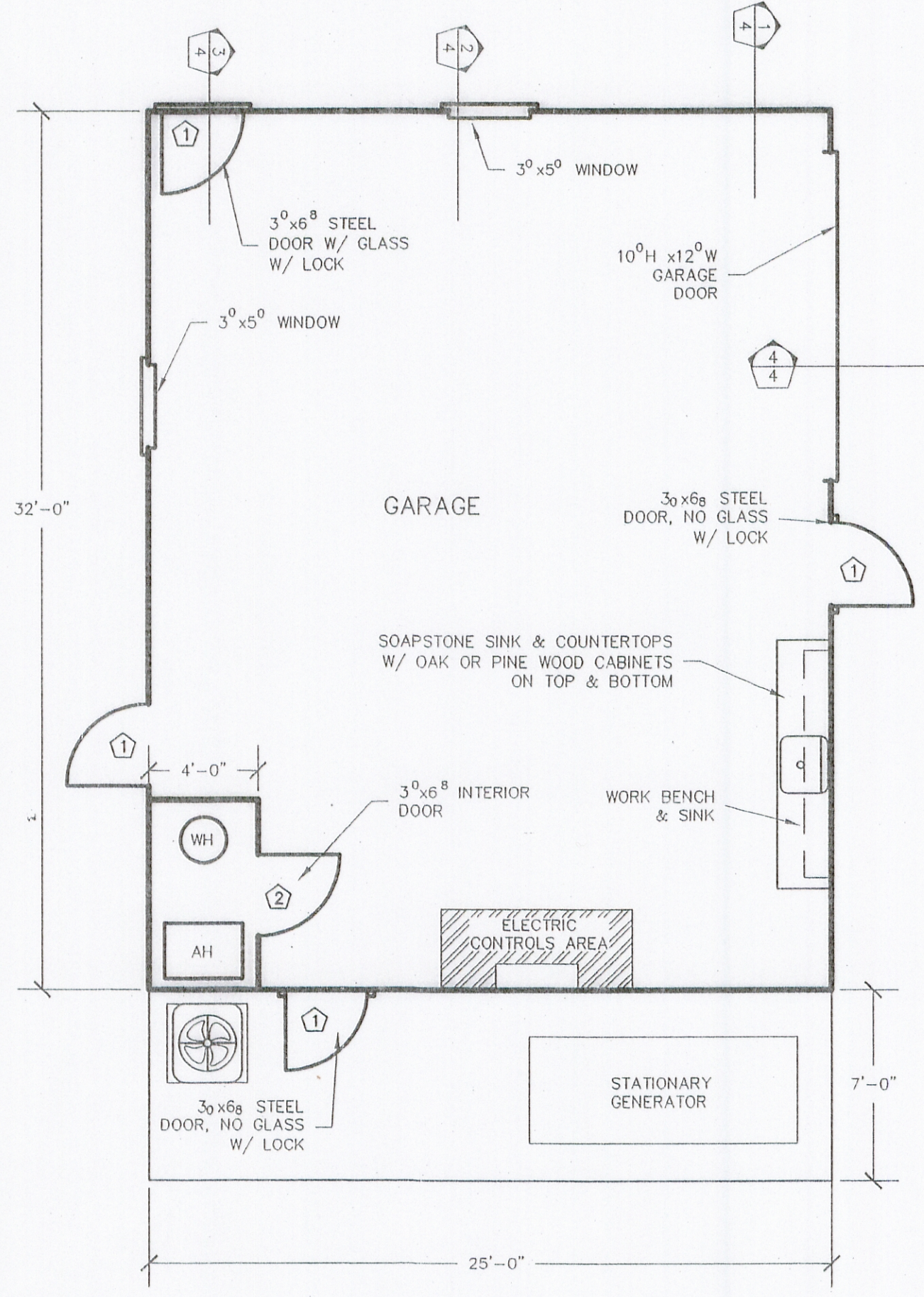


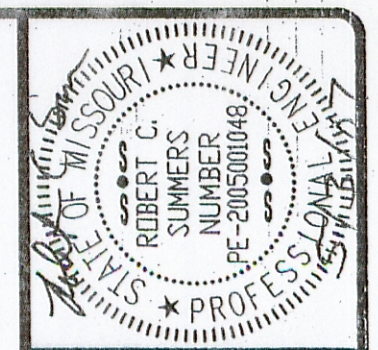
PROPOSED SITE PLAN



- GENERAL NOTES:**
1. ALL THRESHOLDS AT DOORS SHALL NOT EXCEED 1/2" IN HEIGHT.
 2. ACCESSIBLE PARKING SPACES AND ACCESS AISLES SHALL BE LEVEL WITH SURFACE SLOPES NOT EXCEEDING 1:50 IN ALL DIRECTIONS.
 3. ALL SWITCHES, PLUG-INS AND THERMOSTATS SHALL HAVE A MAXIMUM HEIGHT OF 48" FROM THE FLOOR ELEVATION.



FLOOR PLAN
SCALE: 1" = 5'



Revisions: 05-02-2007

Columbia
2415 Center
Columbia, MO 65205
(P) 573-441-0806

Lake of the Ozarks
524
Columbia, MO 65203
(P) 573-302-4606

Popular Bluff Main Office
Popular Bluff, MO 63501
(P) 573-686-0806
www.schultzengineering.com

Schultz Engineering Services, Inc.
Civil Engineering - Land Surveying - Materials Testing

CAMELOT ESTATES SEWER
DISTRICT OF CAMDEN COUNTY
CAMDEN COUNTY, MISSOURI

OFFICE BUILDING
PLAN VIEW

05-24-2006
Designed by: RCS
Checked by: RCS
Project #: 210307
File: 210307-CAMELOT/BET/ALS

Surveyed by:
Field Book:
Drawn by: ALA
Laid Desktop