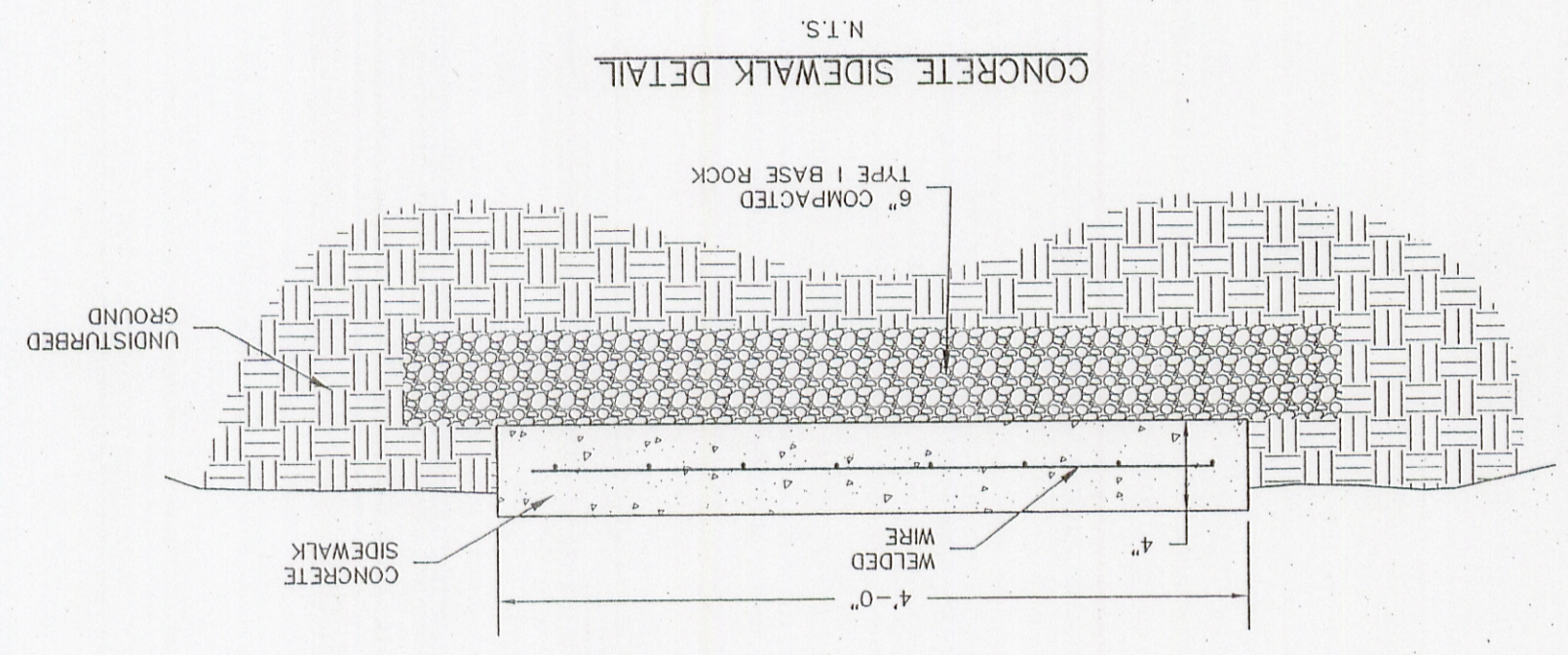
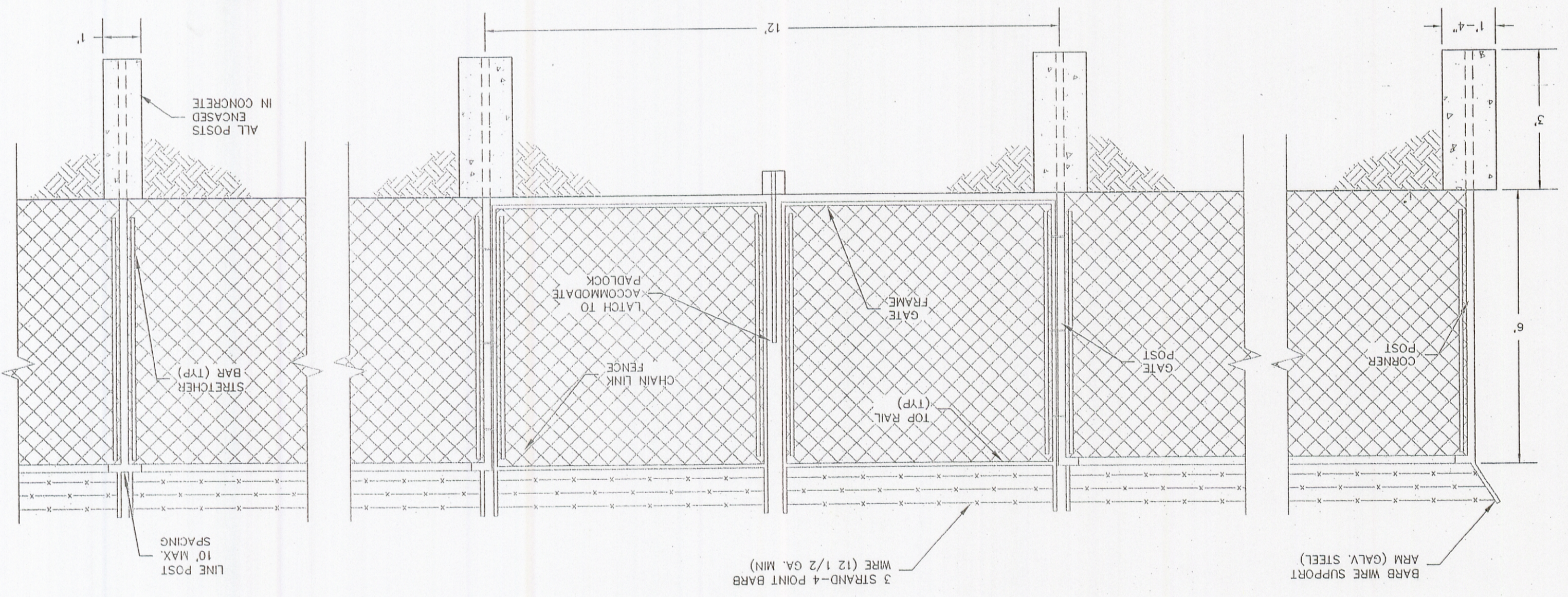
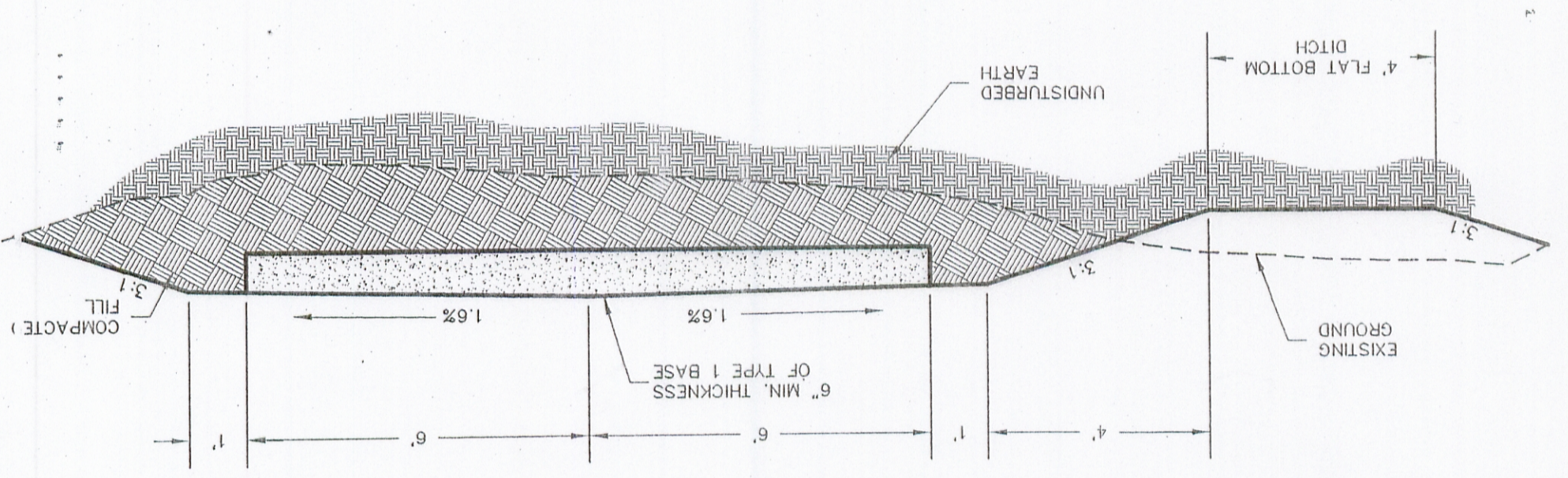


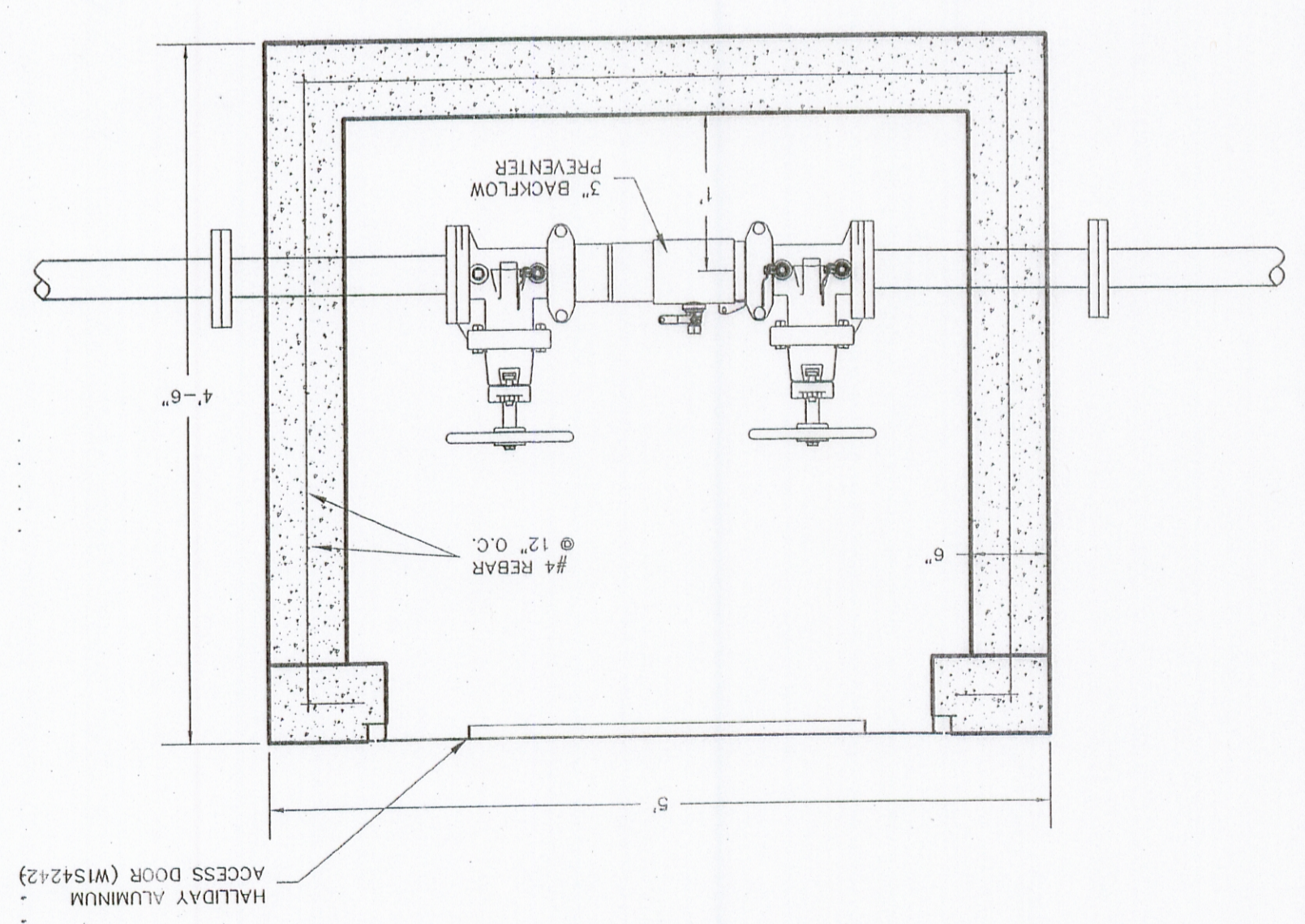
TYPICAL FENCE DETAIL  
N.T.S.



TYPICAL GRAVEL ROAD CROSS SECTION  
N.T.S.



5'x4'x4.5' BACKFLOW PREVENTION  
N.T.S.



17 SHEET  
STANDARD DETAILS  
Designed by: RGS  
Project #: 210307  
Checked by: RGS  
Drawn by: ALA  
Surveyed by: L. D. DASKAS

CAMELOT ESTATES SEWER DISTRICT OF CAMDEN COUNTY  
CAMDEN COUNTY, MISSOURI

**Schultz Engineering Services, Inc.**  
Civil Engineering - Land Surveying - Materials Testing  
Popular Bluff Main Office  
4800 West Boulevard  
Popular Bluff, MO 63901  
(P) 573-886-0806  
www.schultzengineering.com  
Columbia  
2418 Cedar Lane, Suite 105  
Columbia, MO 65201  
(P) 573-441-9508  
Lake of the Ozarks  
4821 Hwy 54, Suite 203  
Greer Beach, MO 65055  
(P) 573-562-9498

