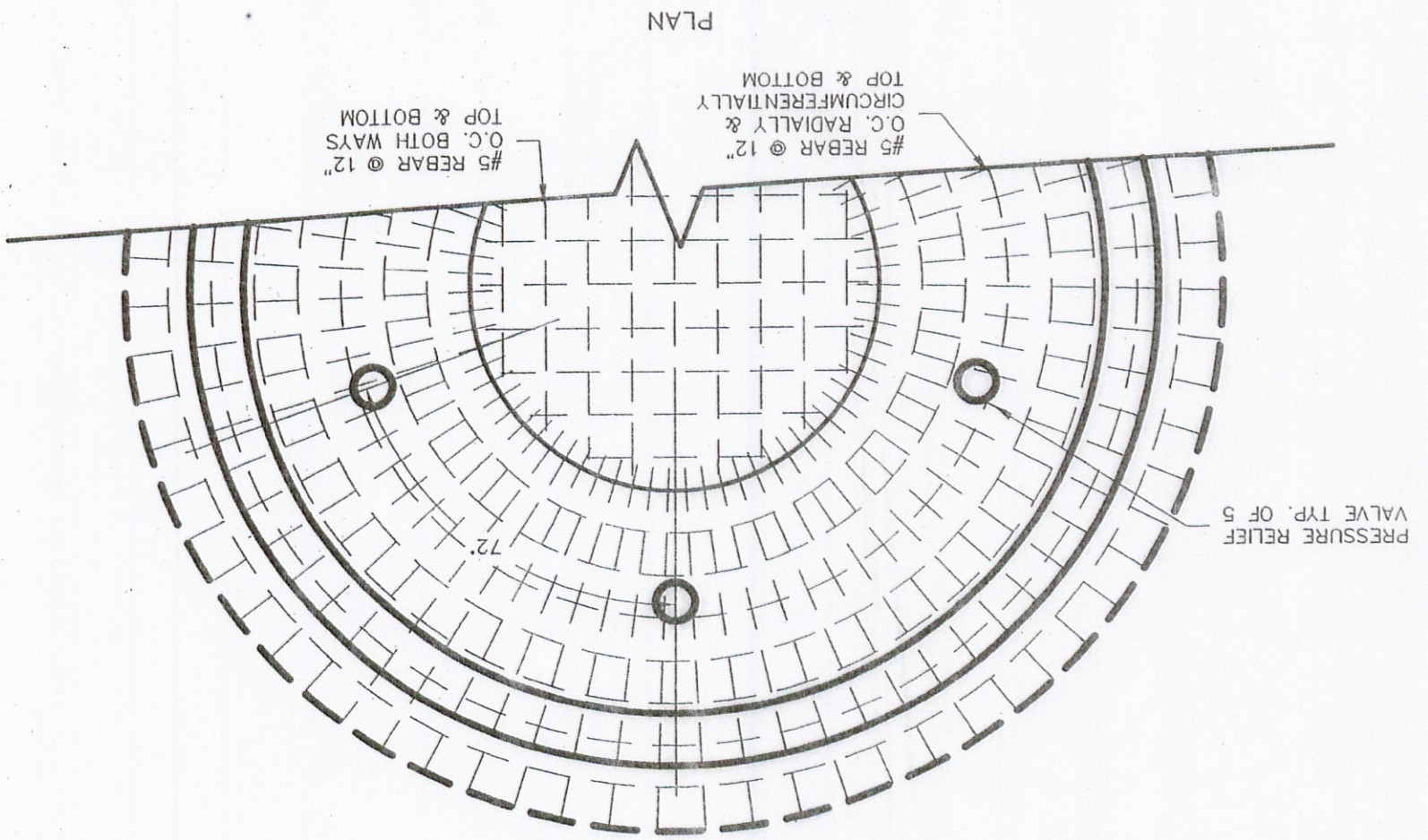
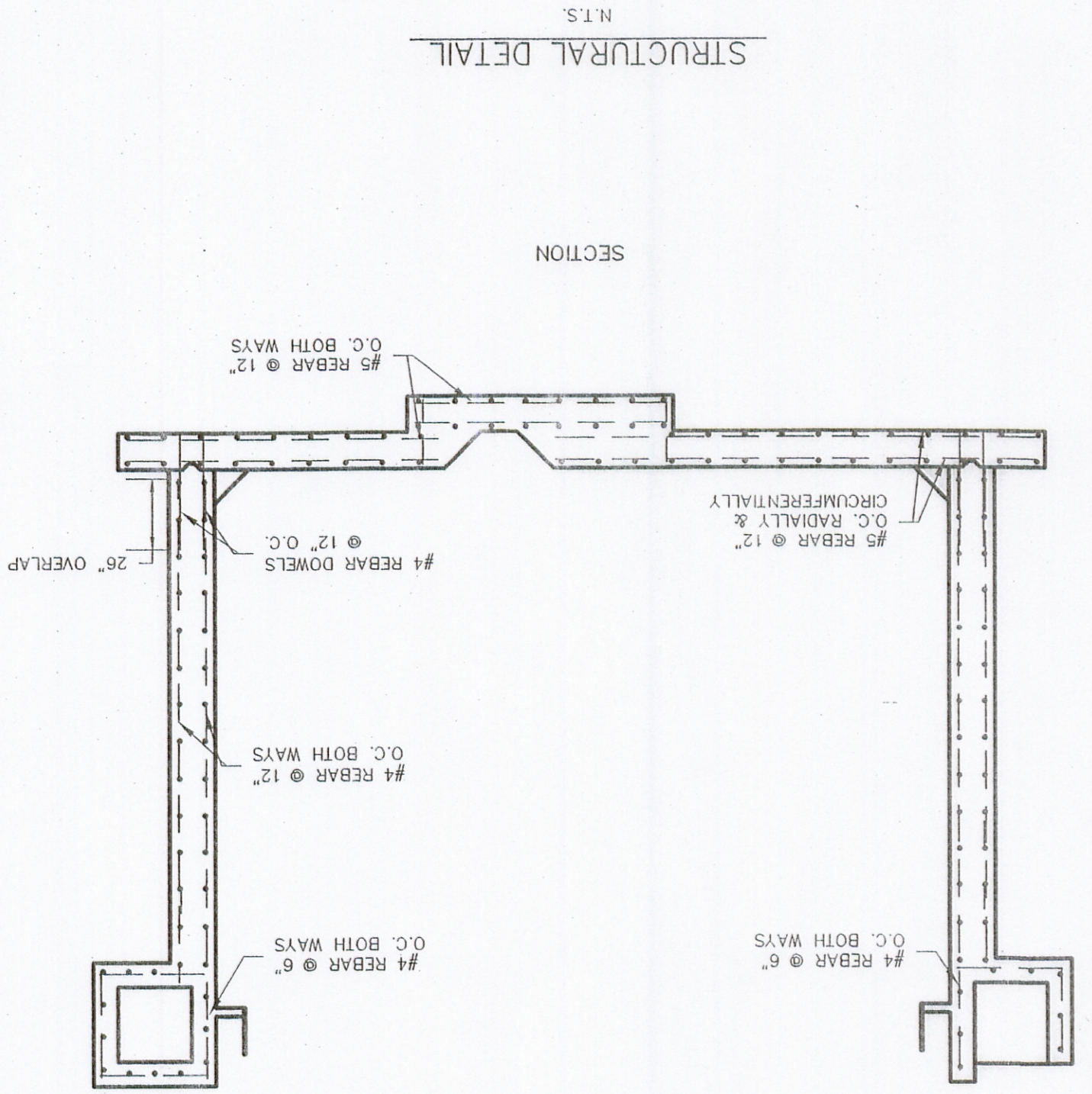


NOTE:
EQUIPMENT MANUFACTURER SHALL
VERIFY ALL DIMENSIONS WITH
ENGINEER PRIOR TO SUBMITTAL.



ALTERNATE
CLARIFIER

05-24-2008
Designed by: RCS
Checked by: RCS
Project #: 210367
Drawn by: ALA
Land Desktop

CAMELOT ESTATES SEWER
DISTRICT OF CAMDEN COUNTY
CAMDEN COUNTY, MISSOURI



Poplar Bluff Main Office
4800 West Boulevard
Poplar Bluff, MO 64901
(P) 573-686-0806
www.schultzengineering.com

Columbia
2418 Courty Lane, Suite 106
Columbia, MO 65203
(P) 573-441-0806

Lake of the Ozarks
4821 Hwy 54, Suite 203
Camden, MO 64804
(P) 573-302-4606

Revisions:

