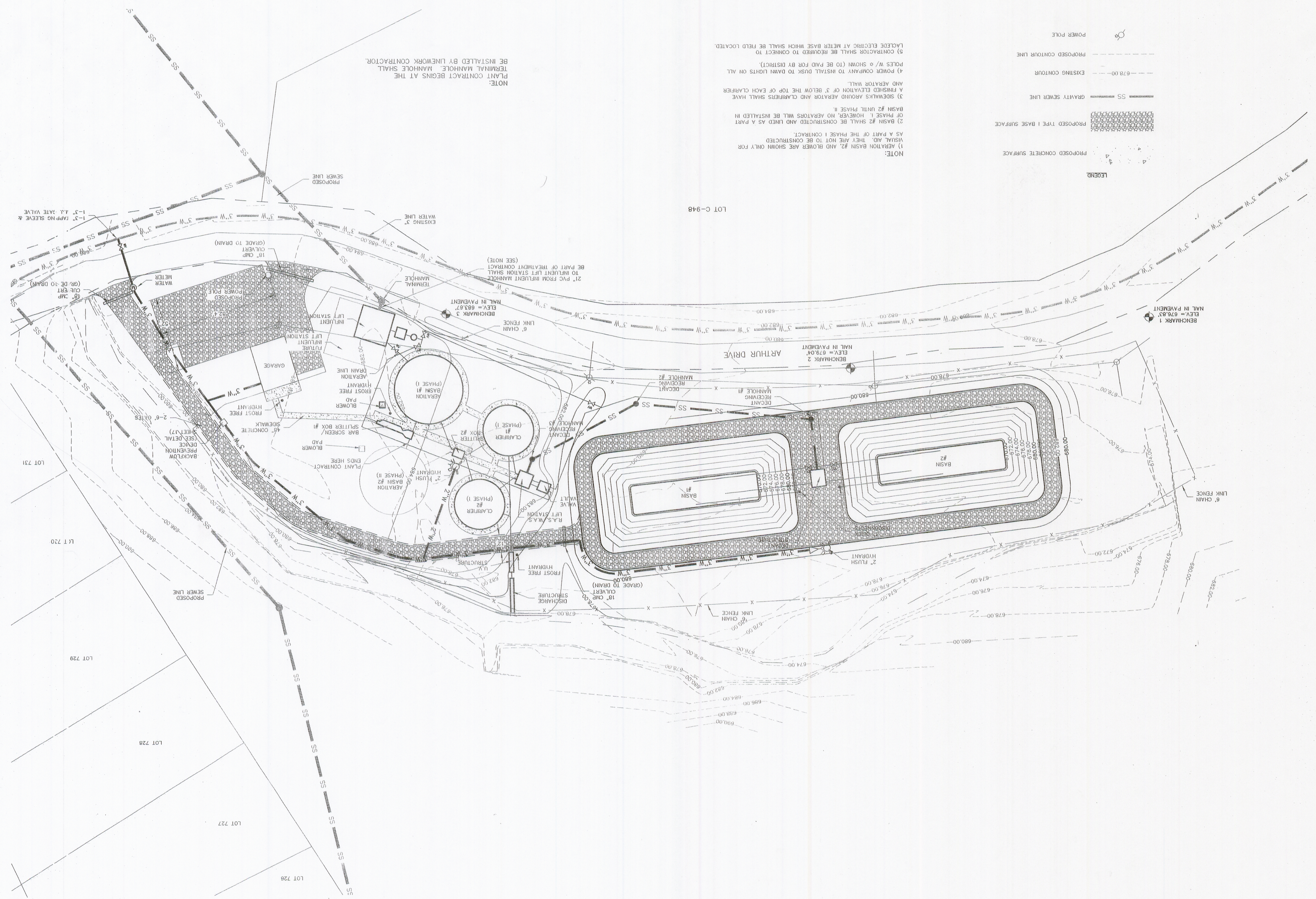


**NOTE:**

- 1) AERATION BASIN #2, AND BLOWER ARE SHOWN ONLY FOR VISUAL AID, THEY ARE NOT TO BE CONSTRUCTED AS A PART OF THE PHASE I CONTRACT.
- 2) BASIN #2 SHALL BE CONSTRUCTED AND USED AS A PART OF PHASE I, HOWEVER, NO AERATORS WILL BE INSTALLED IN BASIN #2 UNTIL PHASE II.
- 3) SIDEWALKS AROUND AERATOR AND CLARIFIERS SHALL HAVE A FINISHED ELEVATION OF 3' BELOW THE TOP OF EACH CLARIFIER AND AERATOR WALL.
- 4) POWER COMPANY TO INSTALL DISK TO DAMN LIGHTS ON ALL POLES W/ a SHOWN (TO BE PAID FOR BY DISTRICT).
- 5) CONTRACTOR SHALL BE REQUIRED TO CONNECT TO LADEDE ELECTRIC AT METER BASE WHICH SHALL BE FIELD LOCATED.

**NOTE:**

PLANT CONTRACT BEGINS AT THE TERMINAL MANHOLE. MANHOLE SHALL BE INSTALLED BY LINEMAN CONTRACTOR.



PROPOSED  
SITE LAYOUT

05-24-2006  
Designed by RCS  
Checked by RCS  
Project # 210367

Submitted by  
Field Book  
Drawn by ALA  
Land Desktop

CAMELOT ESTATES SEWER  
DISTRICT OF CAMDEN COUNTY

CAMDEN COUNTY, MISSOURI

**SES**  
Schultz Engineering Services, Inc.  
Civil Engineering - Land Surveying - Materials Testing

Poplar Bluff Main Office  
4800 West Boulevard  
Poplar Bluff, MO 65301  
(771) 375-3558

Columbia  
2415 Cedar Lane, Suite 105  
Columbia, MO 65201  
(314) 735-4444

Lake of the Ozarks  
4821 Hwy 54, Suite 203  
Osage Beach, MO 65056  
(660) 582-4242

Revisions: 03-02-2007  
05-02-2007

APPROVED FOR CONSTRUCTION

DATE: 05-02-2007  
PROJECT: CAMELOT ESTATES SEWER DISTRICT  
SHEET: 4