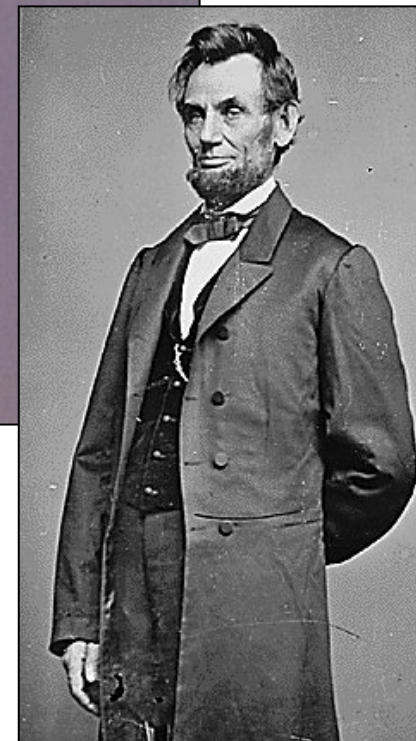




Siege of Vicksburg

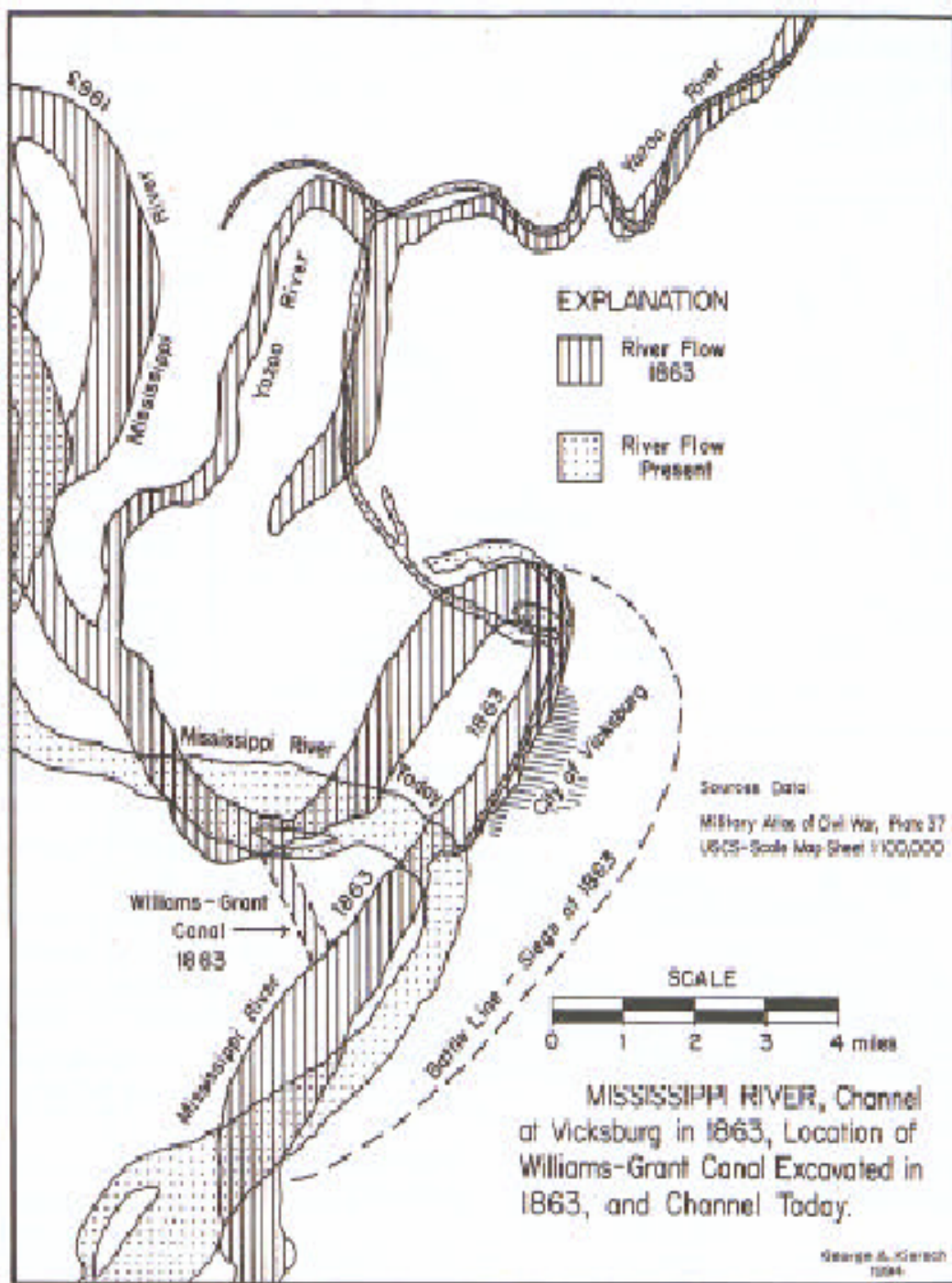
31 March — 4 July 1863

THE STRATEGIC SITUATION FALL 1862



“See what a lot of land these fellows hold, to which Vicksburg is the key!” Abraham Lincoln





Vicksburg was located on the crest of steep sided bluffs comprised of Peoria Loess deposited during the last ice age.

It is located on the eastern side of the Mississippi River, in Mississippi

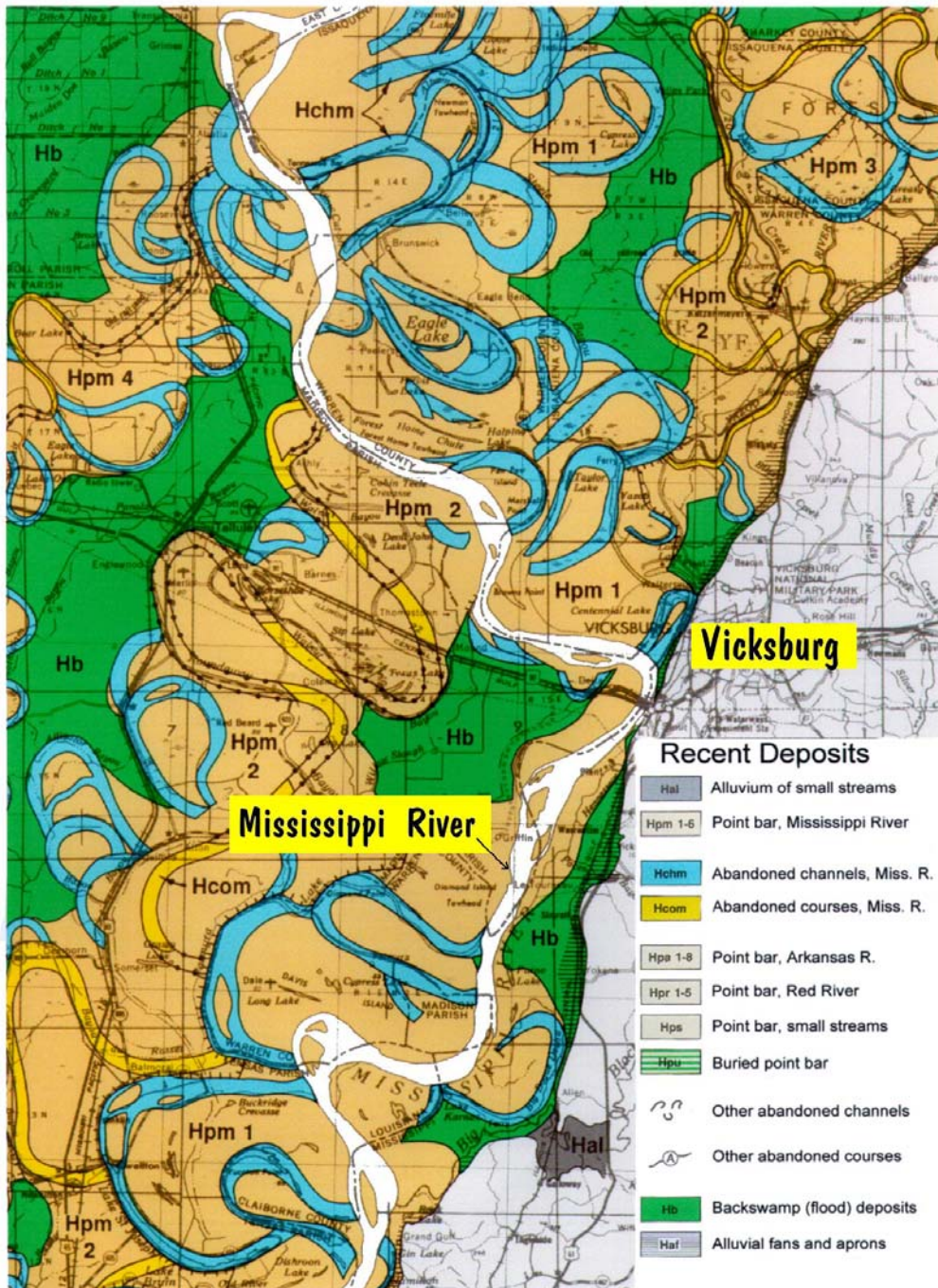
Just below confluence with the Yazoo River

Mississippi River flowed directly beneath the City, within rock throwing distance

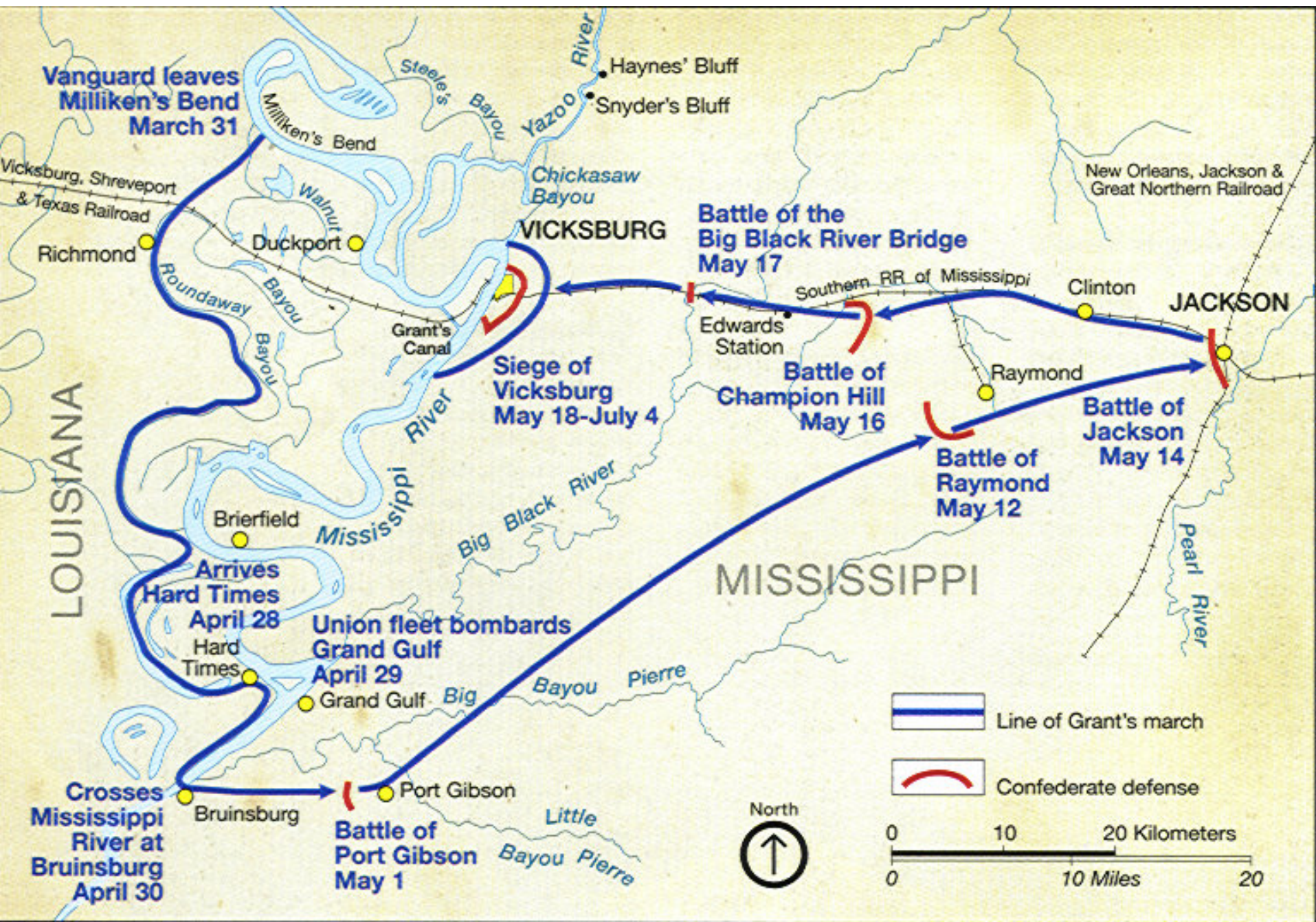
Main rail line from Jackson, Mississippi ran through Vicksburg

Union attempted to cut a canal across the big bend

Sentinel of the Mississippi River



Vicksburg Campaign Map – Union Forces Run Circle Around Vicksburg



Fort Hill on Vicksburg's Bluffs

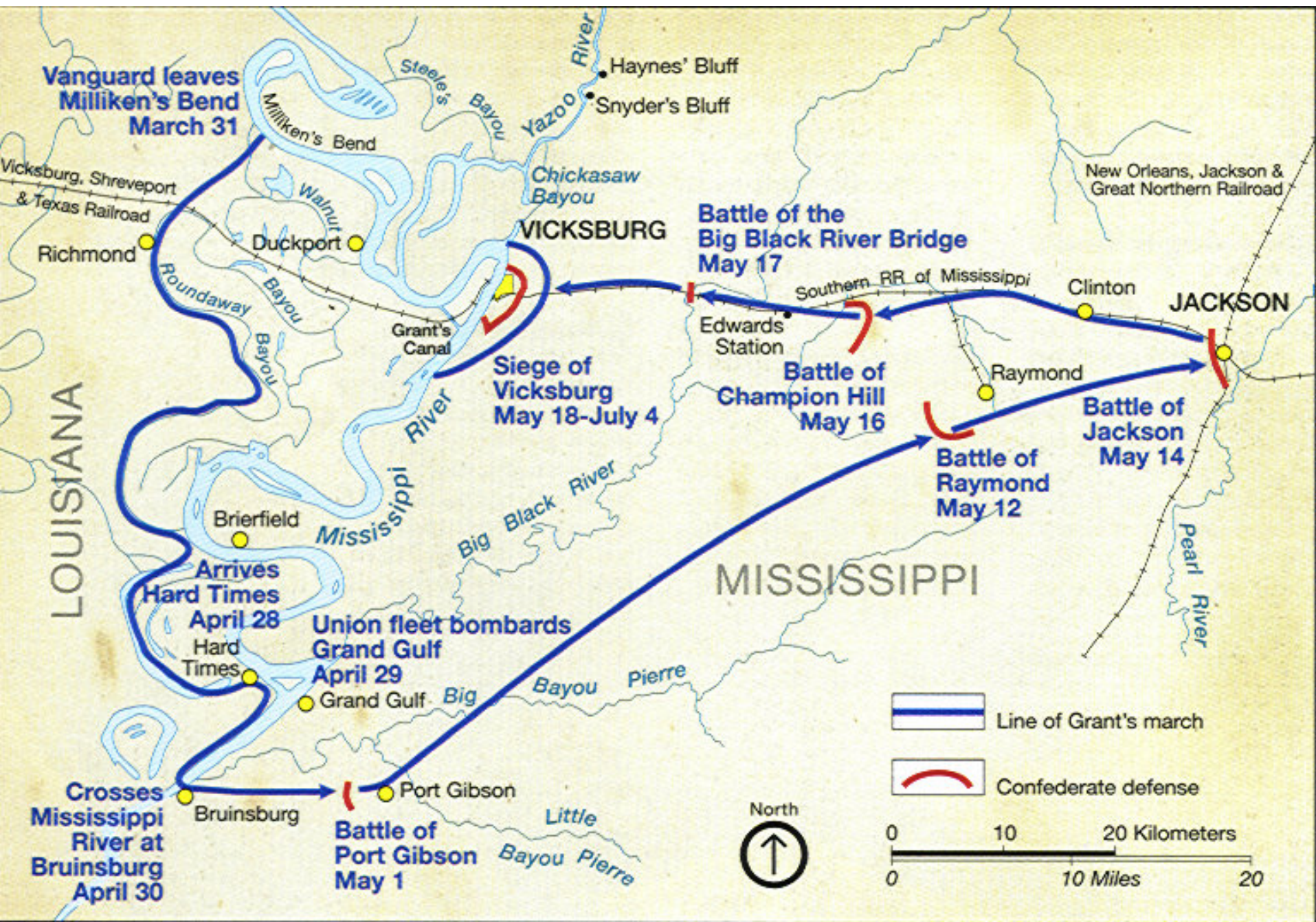


**Commanding views
allowed artillery to
target river and all
river side
approaches to the
Confederate
entrenchments**

Porter Runs the Confederate Batteries at Vicksburg



Vicksburg Campaign Map – Closing the Gaps and Beginning the Siege



First Union Assault – May 19, 1863



LEGEND

-  CONFEDERATE HELD AREAS
-  1 FORT HILL
-  2 STOCKADE REDAN
-  3 3rd LA REDAN
-  4 GREAT REDOUBT
-  5 2nd TEXAS LUNETTE
-  6 RAILROAD REDOUBT
-  7 SALIENT
-  8 SOUTH FORT

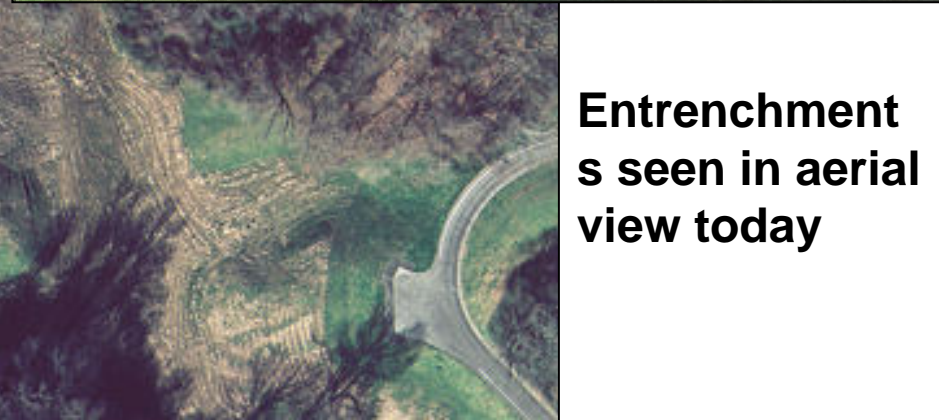
THE VICKSBURG CAMPAIGN UNION ASSAULT

19 MAY 1863





Fort Garrott and Hovey's Approach



Entrenchments seen in aerial view today

Stockade Redan

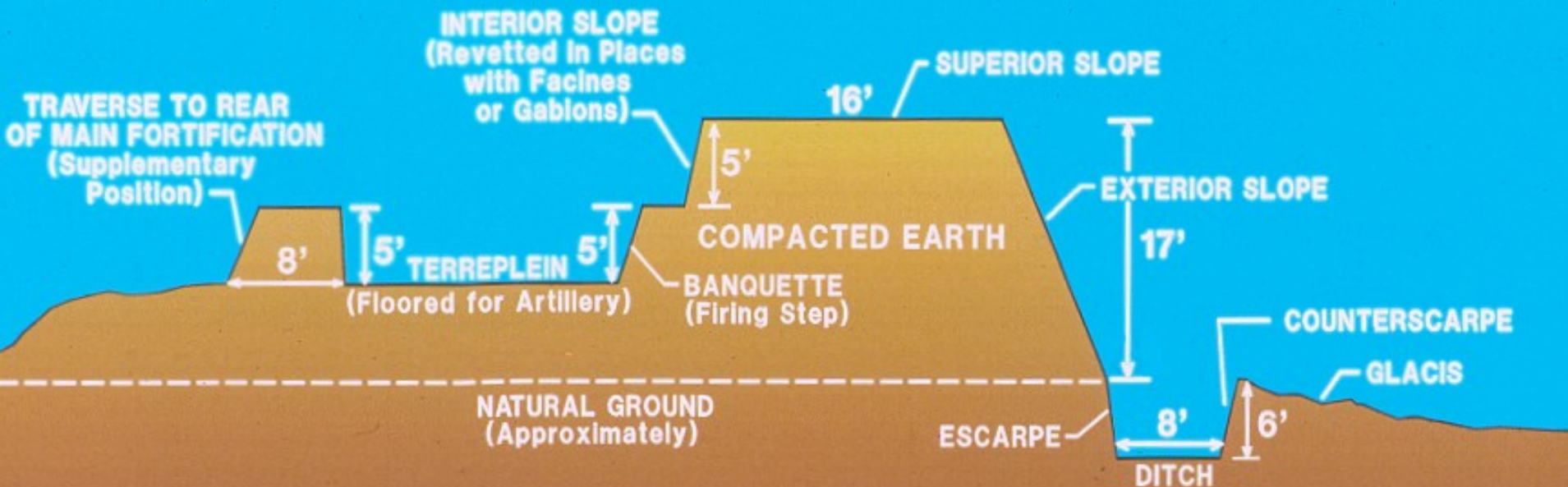


**Stockade
Redan on
left and
Federal
artillery on
right.**



FRIENDLY SIDE

ENEMY SIDE



STOCKADE REDAN ON THE GRAVEYARD ROAD

CONFEDERATE DEFENSES - VICKSBURG, MS

0 5 10
SCALE IN FEET

June 25, 1863



REFERENCES

- **Great Battles of the Civil War.** New York: Historical Books Inc., 1984.
- **Korn, Jerry. War on the Mississippi: Grant's Vicksburg Campaign.** Alexandria: Time Life Books, Inc., 1985.
- **<http://www.nps.gov/vick/>**
- **http://geoscience.wes.army.mil/FS_VicksburgGeology.html**
- **<http://www.civilwarinteractive.com/urbattle5.htm>**