

4

3

2

1

Apply light coat of Blue Goop on the conical surface of the Split Collet

Apply light coat of Blue Goop on the conical surface of the Nipple

Apply light coat of Blue Goop on the Gland threads



B

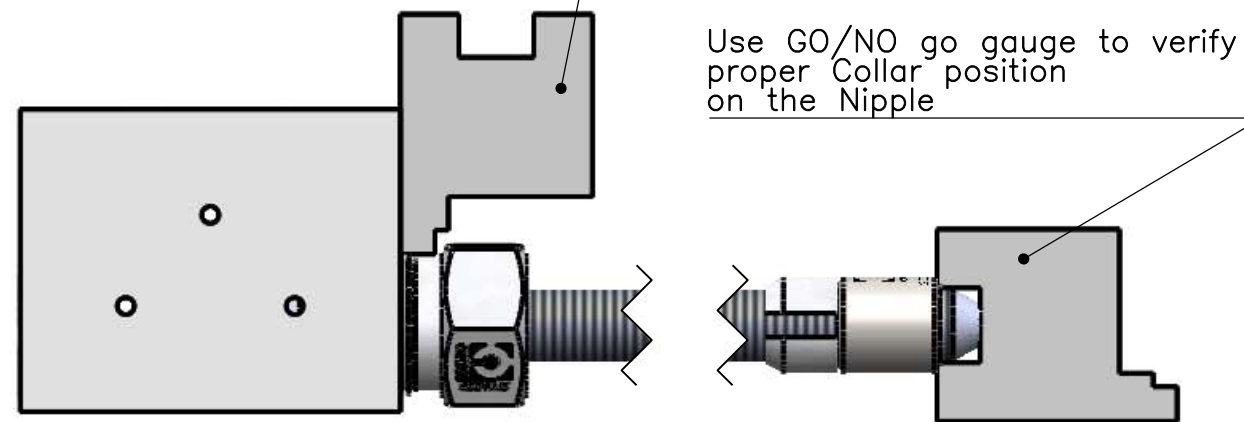
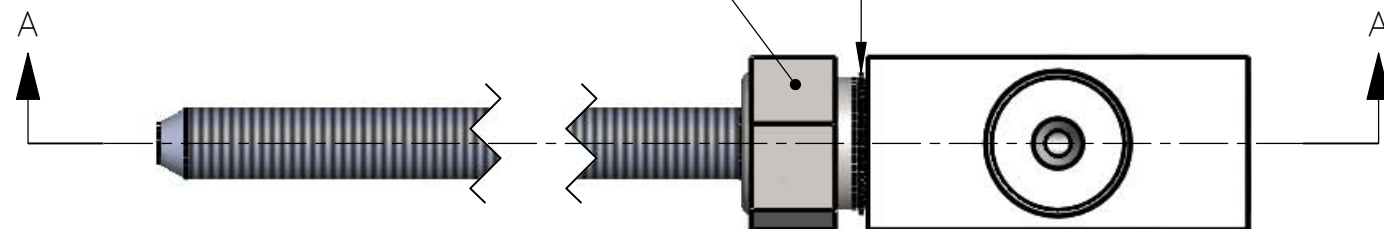
B

Gland torque 60-65 ft.-lbs

A properly installed and torqued Gland should have only 1 to 2 threads exposed

Use GO/NO go gauge to verify proper Gland position after torque was applied

Use GO/NO go gauge to verify proper Collar position on the Nipple

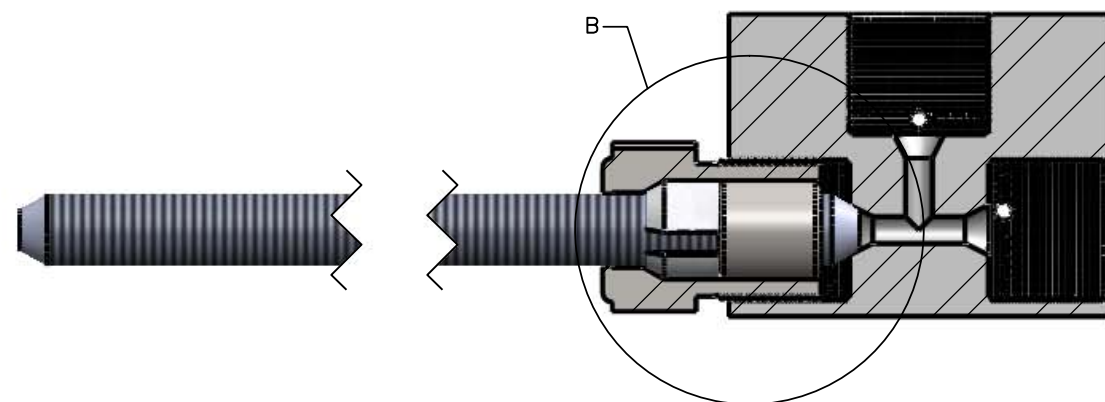


A

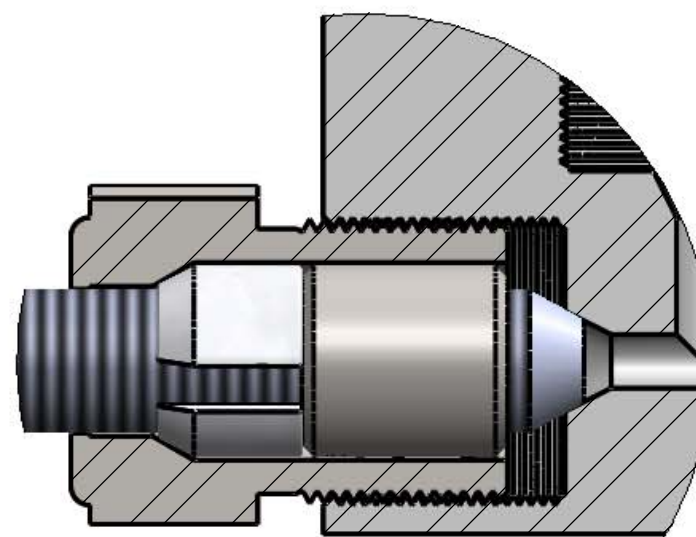
A

A


A



SECTION A-A  
SCALE 1 : 1



DETAIL B  
SCALE 2 : 1

	TITLE: HIGH PRESSURE FITTINGS, 3/8" TUBING	
	OMAX	
	DRAWING BY: A.KASHIERSKI	MATERIAL / SPECIFICATION
	DATE: 6/4/15	REVISION: A
PROPRIETARY INFORMATION  THIS DRAWING IS THE PROPERTY OF OMAX CORPORATION AND NOT TO BE COPIED OR REPRODUCED WITHOUT THE WRITTEN CONSENT OF OMAX CORPORATION.	REVISOR BY:	SHEET 1 OF 1
DATE:	DWG # 401044	

4

3

2

1