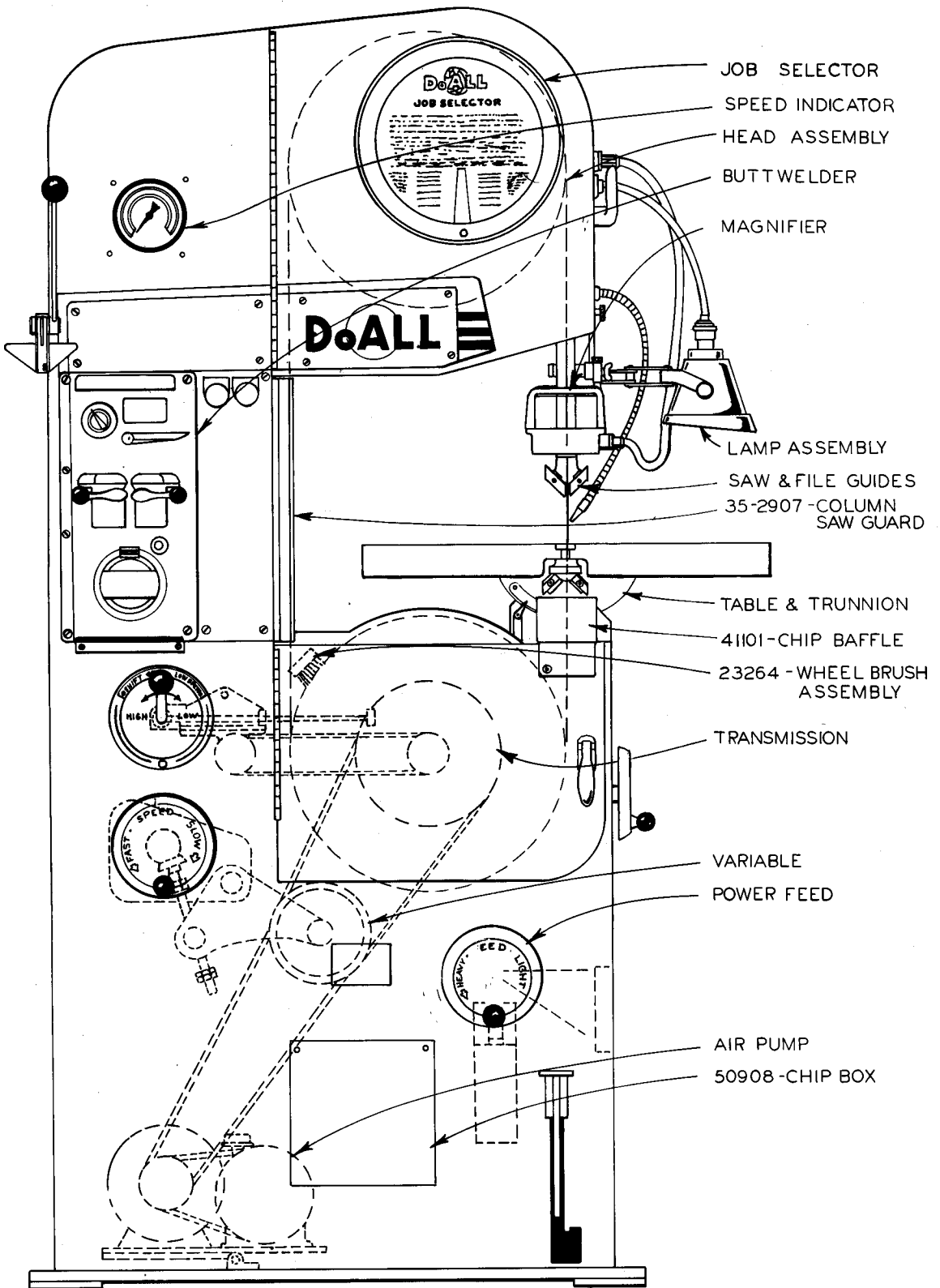


INDEX A-2FICHE NO. A-4 CLASS Contour MODEL 16-2 SERIAL NO. 45-53101 TO 45-581123
SERIAL NO. 123-58101 TO 123-60295

FRAME NO.

PAGE NO.	DESCRIPTION	FIRST SERIAL	LAST SERIAL	DWG.	P.LIST	FICHE NO.
C-1-10	Final Assembly	ALL		A-3	A-3	
C-8-53	Air Pump	ALL		A-5&6	A-5&6	
C-7-25	Bandfiler	ALL		A-7&8	A-7&8	
C-7-25	Band Polisher	ALL		A-7&8	A-7&8	
H1-19.0	Blade Shear	See Butt welder		F-9	F-10	H-2
C-1-10	Chip Brush	ALL		A-3	A-3	
C-10-21	Coolant	ALL		A-9	A-9	
C-10-7	Cutoff Attach. #1 All Purpose	ALL		A-11	A-12	
C-10-28	Cutoff Attach. #2 Side Mount	ALL		A-13	A-14	
C-10-2	Disc Cutter	ALL		B-1	B-2	
C-1-54	Door Handles & Latches	ALL		B-3&4	B-3&4	
C-5-6	Drive	45-53101 to 45-581123		B-5	B-5	
C-5-7	Drive	123-58101 to END		B-6	B-6	
H1-20.0	Etching Pencil	See Butt welder		F-11	F-12	H-2
C-10-18	Filing Fixture for Small Parts	ALL		B-7	B-7	
C-2-8	Head	45-53101 to 45-581123		B-9&10	B-9&10	
C-2-9	Head	123-58101 to END		B-11&12	B-11&12	
C-10-22	Heavy Work Clamps	ALL		B-13&14	B-13&14	
C-10-23	Heavy Work Slides	ALL		C-1	C-2	
C-9-54	Hydraulic Contour Feed	ALL		C-3&4	C-3&4	
C-9-76	Hydraulic Tank	ALL		C-5	C-5	
C-8-104	Job Selector	ALL		C-7	C-8	
C-8-5	Lamp	ALL		C-9	C-9	
C-10-15	Magnifier	ALL		C-11	C-12	
C-10-12	Miter Attachment	ALL		C-13	C-14	
C-9-3	Power Feed, Weight Type	45-53101 to 45-581123		D-1&2	D-1&2	
C-9-4	Power Feed, Weight Type	123-58101 to END		D-3&4	D-3&4	
C-10-20	Ratchet Feed	ALL		D-5	D-6	
C-10-35	Rip Fence	ALL		D-7&8	D-7&8	
C-7-10	Saw Guides, Speeds to 1500 FPM	45-53101 to 45-581123		D-9	D-9	
C-7-6	Saw Guides, Speeds Above 1500 FPM	45-53101 to 45-581123		D-10	D-10	
C-7-9	Saw Guides,	123-58101 to END		D-11	D-11	
C-10-21	Saw Lubricator	ALL		A-9	A-9	
C-10-17	Screw Feed	ALL		D-12	D-12	
C-5-103	Speed Indicator	45-53101 to 45-581123		D-13	D-13	
C-5-104	Speed Indicator	123-58101 to END		D-14	D-14	
C-3-24	Table & Trunnion	ALL		E-1	E-1	
C-9-107	Table Supports	ALL		E-3	E-4	
C-4-15	Transmission, 2 Speed	45-53101 to 45-581123		E-5&6	E-5&6	
C-4-41	Transmission Replacement Unit	45-53101 to 45-581123		E-7	E-8	
C-4-17	Transmission, 2 Speed	123-58101 to END		E-9&10	E-9&10	
C-4-16	Transmission, 3 Speed	123-58101 to END		E-11&12	E-11&12	
C-4-18	Transmission, 1 Speed	123-58101 to END		E-13	E-13	
C-5-35	Variable Speed Pulley, 6-1/2 inch	45-53101 to 45-581123		F-1	F-2	
C-5-34	Variable Speed Pulley, 8-1/2 inch	123-58101 to END		F-3	F-4	
C-4-15	Wheel, Lower	45-53101 to 45-581123		E-5&6	E-5&6	
C-5-7	Wheel, Lower	123-58101 to END		B-6	B-6	
C-2-8	Wheel, Upper	45-53101 to 45-581123		B-9&10	B-9&10	
C-2-9	Wheel, Upper	123-58101 to END		B-11&12	B-11&12	
C-10-16	Work Holding Jaws	ALL		F-5	F-6	



DOALL-16-2, 16-2A

PRINTED IN U.S.A.

NOTE:

TO ORDER COMPLETE
AIR PUMP ATTACHMENT
FOR HS,HSV,LSV, OR SFP,
ORDER_50642

- 10298-ADAPTOR_____1
- 4385-NUT_____1
- HOSE: SPECIFY LENGTH
AND I.D. WHEN ORDERING
- 4162---HOSE CLAMP___2

I-WIRE INSERT_____4658

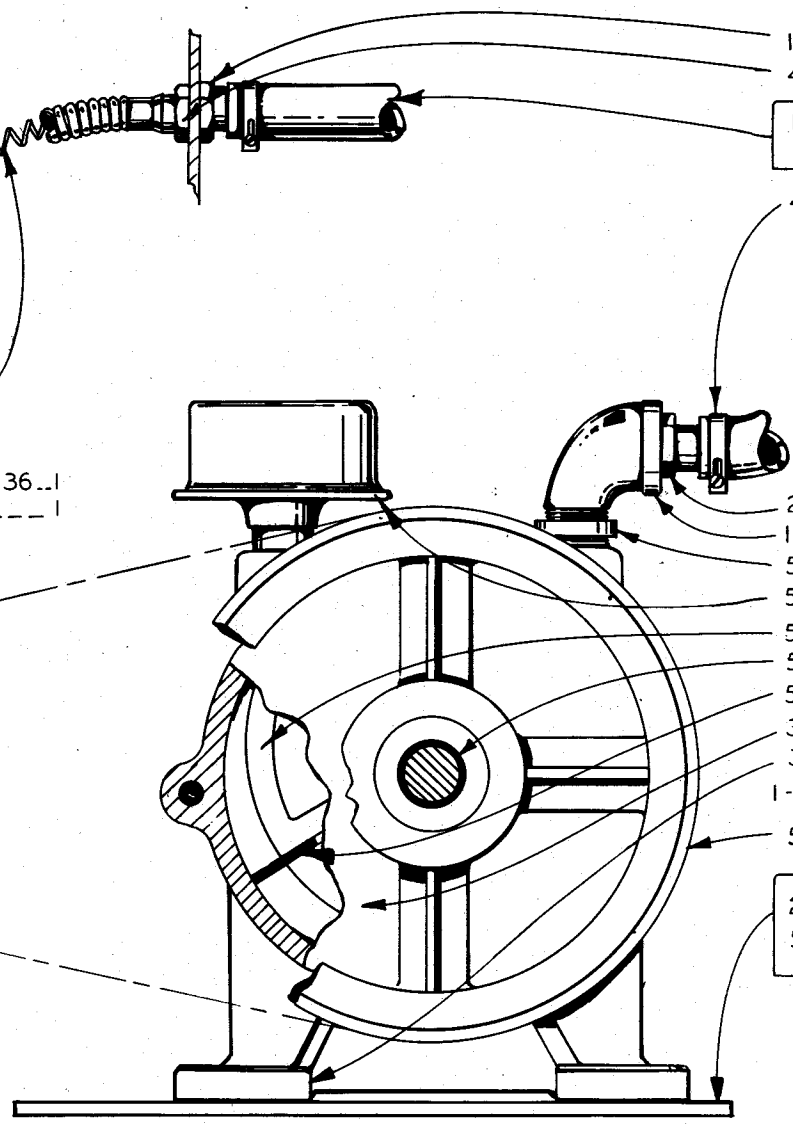
4097-AIR HOSE -HS,HSV,LSV,
SFP,16-1,16-2, 36-2, Z16& Z36...1
6073-AIR HOSE .26-2 & 60-2-----1

- 2004-NIPPLE _____1
- 17-13521-ELBOW _____1
- 5-11517- REDUCER _____1
- 5-11510-BREATHER _____1
- 5-11104- ROTOR _____1
- 5-11405-BEARING _____1
- 5-11319-VANE _____3
- 35-6735-COVER _____1
- 35-6736-BODY _____1
- I-AIR PUMP ASS'Y. ___42708
- 5-11316-PULLEY _____1

PULLEY: SPECIFY
MOTOR SPEED AND
SHAFT DIA. WHEN
ORDERING

21381-BASE .HS,HSV,LSV, SFP...1
5-11318-BASE .16-1,16-2,26-2
36-2 & 60-2...1

MODEL	FIRST MACH.	LAST MACH.
HS	76-54101	76-58147
HSV	77-54101	77-58133
LSV	78-54101	78-58289
SFP	79-54101	79-582112
Z16	67-53101	67-60160
Z36	68-53101	68-59141
16-1	48-53101	48-55209
16-2	45-53101	45-581123
36-2	52-53101	52-58451
26-2	54-53101	54-58390
60-2	56-53101	56-57108
36-2A	85-54101	85-58178



AIR PUMP ASSEMBLY

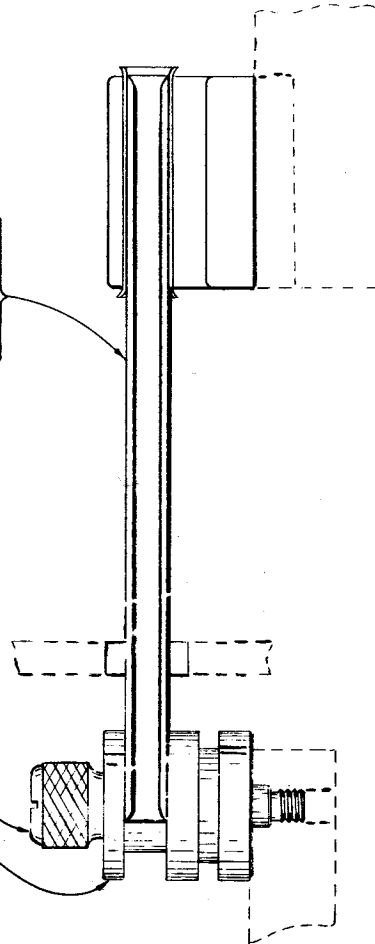
C-8-53
Z-7-52

PRINTED IN U.S.A

FILE GUIDES

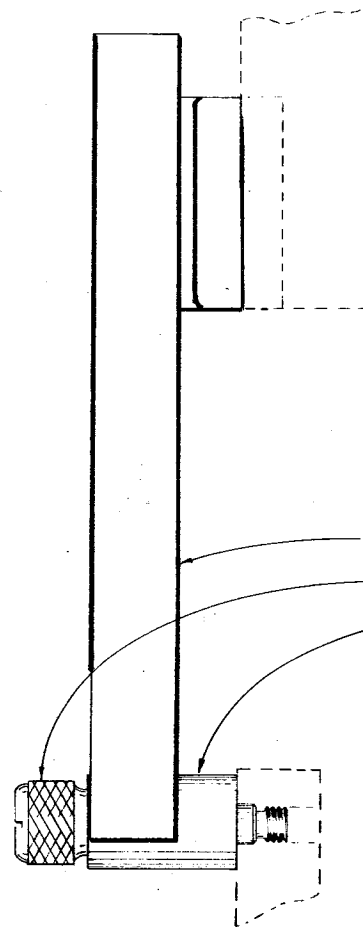
- ¼ X 6¾ FILE GUIDE - - 34-09002
- ¾ X 8¾ FILE GUIDE - - 34-09003
- ½ X 8¾ FILE GUIDE - - 34-09004
- ¼ X 12½ FILE GUIDE - - 34-09005
- ¾ X 12½ FILE GUIDE - - 34-09006
- ½ X 12½ FILE GUIDE - - 34-09007

- 1-SCREW - - - - - 34-09001
- 1-BACKUP - - - - - 34-09312



FILE GUIDE ASSEMBLY

FIRST UNIT 4-11-38



- 6-10001-BACKUP ASSEMBLY - - - 1
- 34-09001-BACKUP SCREW - - - 1
- 34-10402-GUIDE BACKUP - - - 1

NOTE: COMPLETE ASSY.
INCLUDES BACKUP ASSY,
BACKUP, 3 BANDS AND
GRAPHITE GUN

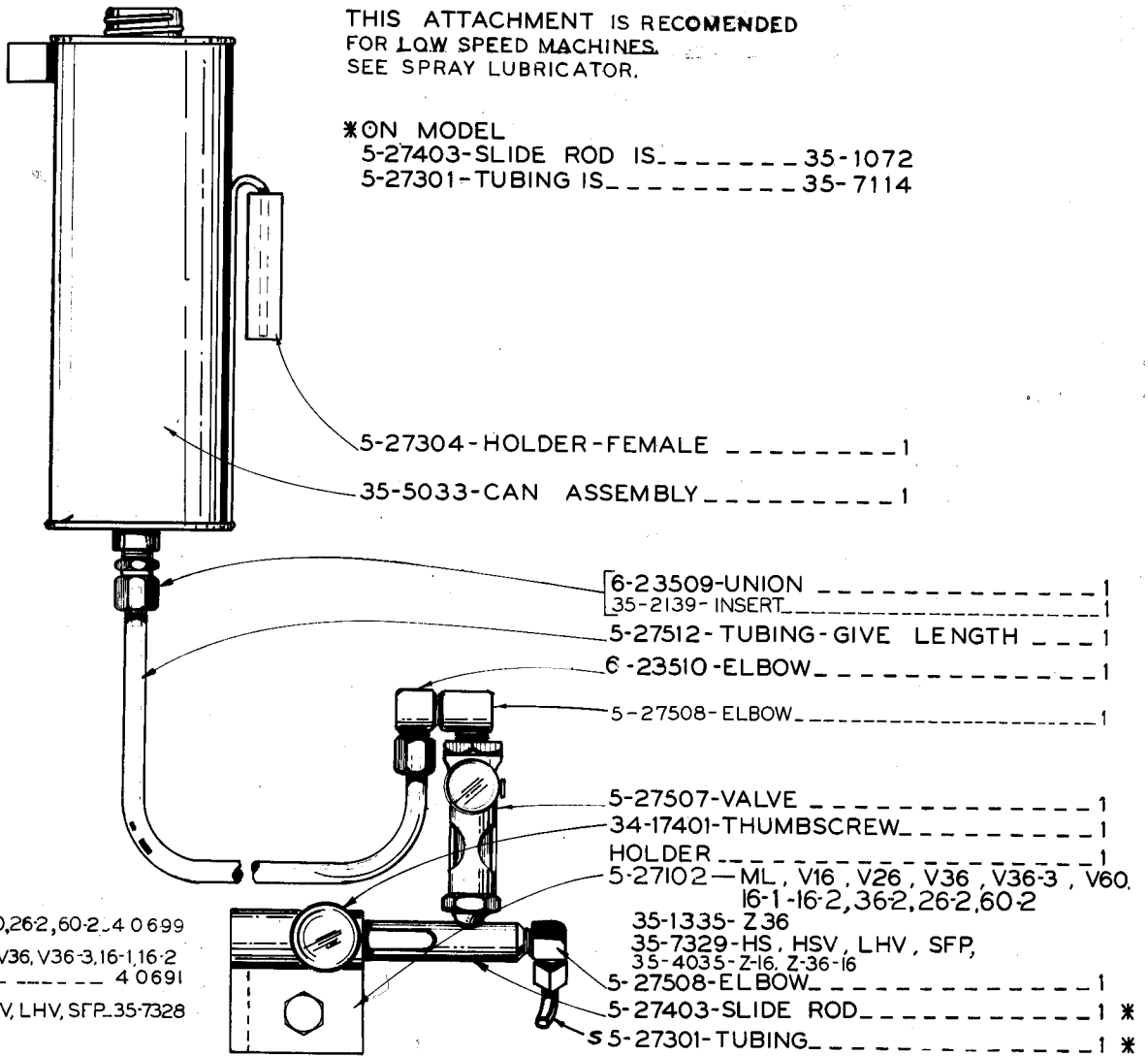
- 115" - - - - - 35-5468
- 175" - - - - - 244 39
- 160" - - - - - 35-5469
- 183" - - - - - 244 40

BAND POLISHING ASSEMBLY

FIRST UNIT 4-11-38

THIS ATTACHMENT IS RECOMENDED
 FOR LOW SPEED MACHINES.
 SEE SPRAY LUBRICATOR.

*ON MODEL
 5-27403-SLIDE ROD IS-----35-1072
 5-27301-TUBING IS-----35-7114

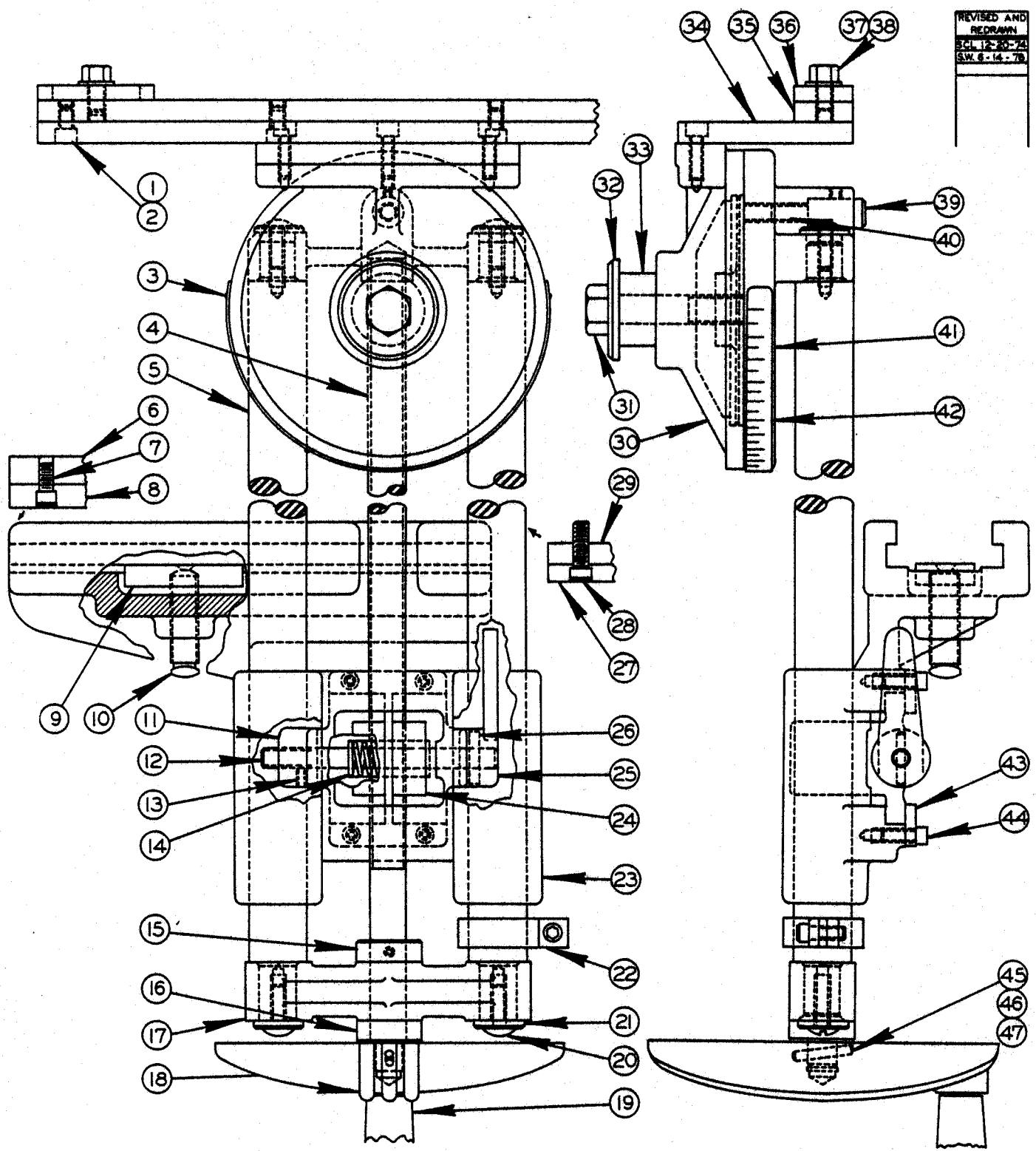


** V26 V60,262,60-2,4 0 699
 ML,V16,V36,V36-3,16-1,16-2
 36-2 ----- 4 0691
 HS, HSV, LHV, SFP, 35-7328

FIRST MACHINE 4-11-1938
 LAST MACHINE 12-31-1959

** COOLANT DRIP APPLICATOR

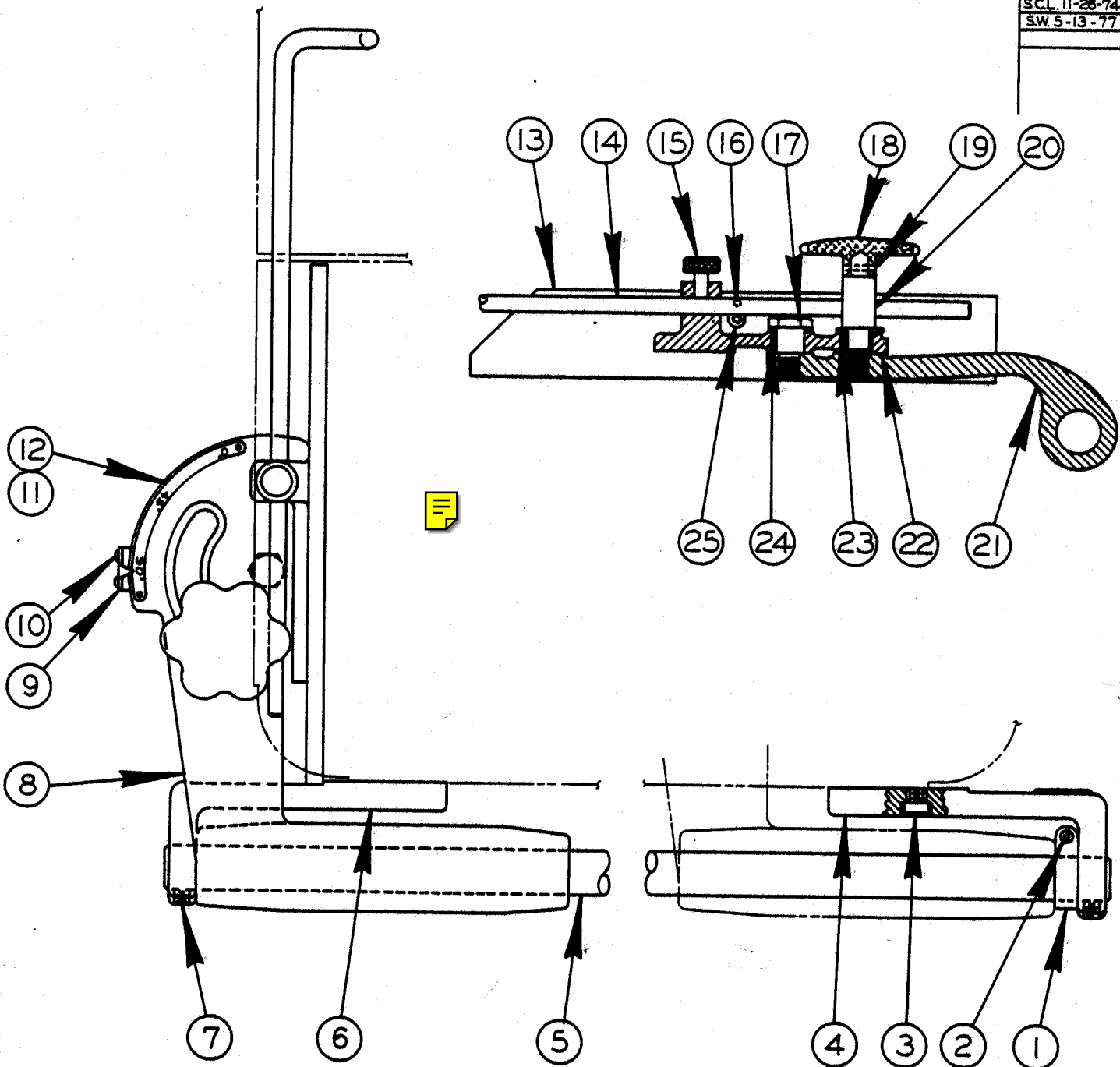
REVISED AND
REDRAWN
SCL 12-20-74
S.W. 6-14-76



ALL PURPOSE MITRE ATTACHMENT ASSEMBLY

No. 1 ALL PURPOSE CUT-OFF, RIPPING AND MITERING ATTACHMENT

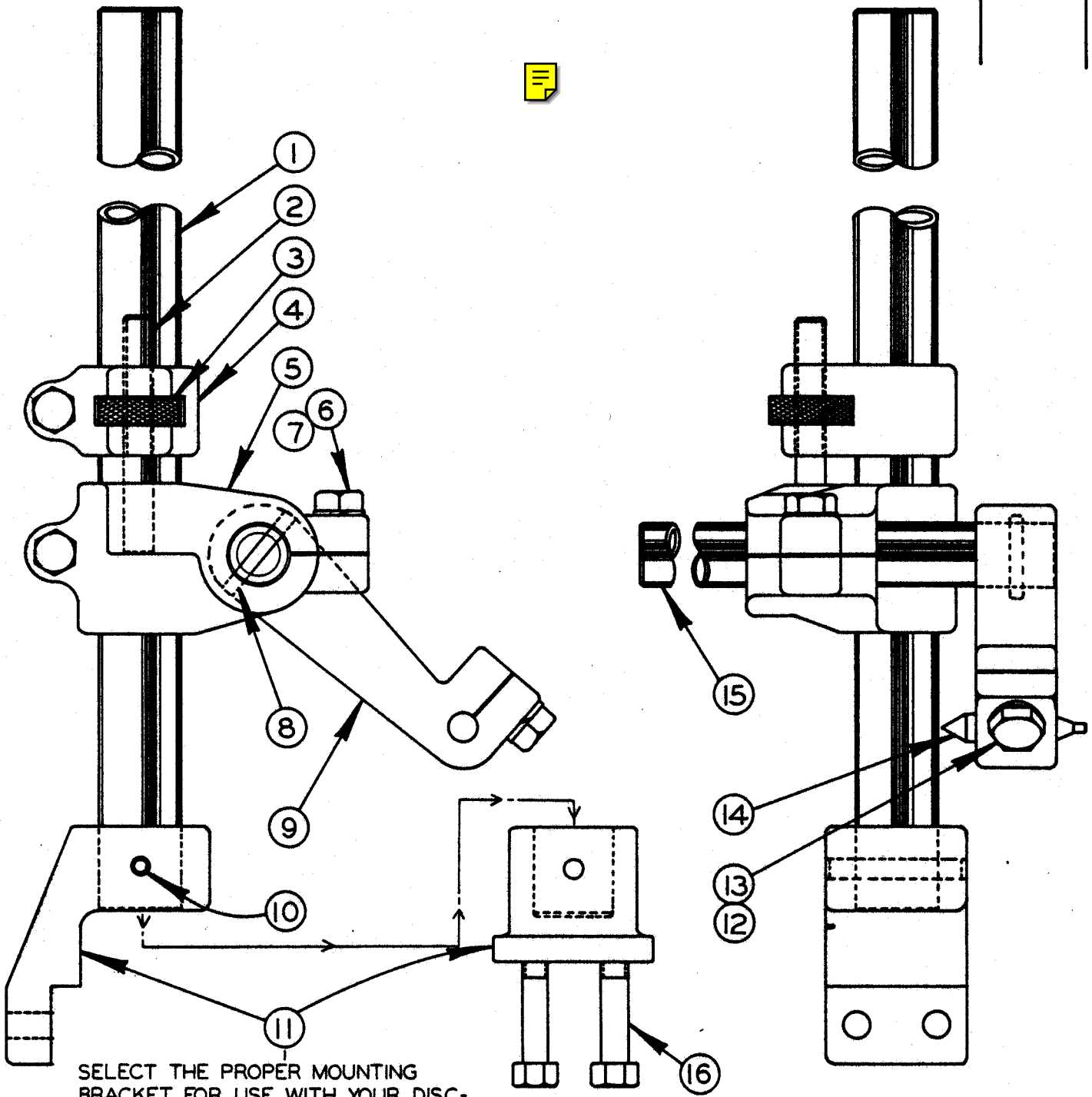
INDEX NO.	CATALOG NO.	DESCRIPTION	UNITS PER ASS'Y
Ref.	090-504937	No. 1 All Purpose Cut-off, Ripping & Mitering Attachment(24 x 24 Table)	
Ref.	111-280046	No. 1 All Purpose Cut-off, Ripping & Mitering Attachment(30 x 30 Table)	
Ref.	135-054278	No. 1 All Purpose Cut-off, Ripping & Mitering Attachment(36 x 36 Table)	
1	135-051852	. All Purpose Mitre Attachment Sub-Assembly	1
2	091-982355	. . Screw, Soc. Hd. Cap 1/4-20NC x 3/8	7
3	091-993972	. . Screw, Rd. Hd. Drive #2 x 1/4 P.K.	4
4	111-284162	. . Feed Screw	1
5	111-284154	. . Slide Rod	2
6	106-283013	. L.H. Table Guide Spacer (24" Table)	Use
	111-283032	. L.H. Table Guide Spacer (30" Table)	
	135-047256	. L.H. Table Guide Spacer (36" Table)	One
7	091-982363	. Screw, Soc. Hd. Cap 1/4-20NC x 1/2	2
8	106-283021	. L.H. Table Guide(24" Table)	Use
	111-283024	. L.H. Table Guide(30" Table)	
	135-047264	. L.H. Table Guide(36" Table)	One
9	111-283040	. . Locking Pad	1
10	111-284097	. . Locking Pad Set Screw	1
11	111-281101	. . Split Nut Adjusting Nut	1
12	111-284170	. . Split Nut Adjusting Pin	1
13	091-984104	. . Screw, Soc. Set #10-24NC x 1/4	3
14	111-285086	. . Split Nut Spring	1
15	111-284188	. . Screw Collar	1
16	111-284196	. . Screw Handwheel Collar	1
17	111-291084	. . Slide Rod & Handle Bracket	1
18	134-051036	. . Handwheel	1
19	091-181164	. . Speed Change Handle	1
20	091-990192	. . Screw, Truss Hd. Mach. 1/4-20NC x 3/4	4
21	111-284204	. . Slide Rod Washer	4
22	111-281093	. . Feed Stop Collar	1
23	111-281077	. . Table Slide Casting	1
24	111-281119	. . Split Nut	1
25	111-281127	. . Split Nut Adjusting Handle	1
26	090-042334	. . Roll Pin	1
27	106-283039	. R.H. Table Guide (24" Table)	Use
	111-283081	. R.H. Table Guide (30" Table)	
	135-047280	. R.H. Table Guide (36" Table)	One
28	091-982421	. Screw, Soc. Hd. Cap 1/4-20NC x 1	6
29	106-283047	. R.H. Table Guide Spacer (24" Table)	Use
	111-283073	. R.H. Table Guide Spacer (30" Table)	
	135-047272	. R.H. Table Guide Spacer (36" Table)	One
30	111-281028	. . Mitre Head	1
31	091-980714	. . Screw, Hex. Hd. Cap 1/2-13NC x 2-1/2.....	1
32	111-284055	. . Power Feed Chain Washer	1
33	111-284105	. . Power Feed Chain Collar	1
34	111-283016	. . Mitre Bar Support	1
35	111-283065	. . Mitre Bar	1
36	111-283057	. . Work Stop	1
37	091-992628	. . Washer, 5/16" Std.	1
38	091-980250	. . Screw, Hex. Hd. Cap 5/16-18NC x 1/2	1
39	111-284139	. . Mitre Head Support Pin	1
40	091-984385	. . Screw, Soc. Hd. Set 5/16-18NC x 5/8	1
41	111-281069	. . Mitre Head Base	1
42	111-285052	. . Mitre Head Graduated Plate	1
43	111-283099	. . Split Nut Side Plate	1
44	091-982215	. . Screw, Soc. Hd. Cap #10-24NC x 5/8	5
45	090-042599	. . Roll Pin	1
46	091-164426	. . Screw, Soc. Hd. Shoulder	1
47	091-156323	. . Washer	1
	091-181172	. . Pin (Not Shown)	1



NO. 2
STANDARD CUT-OFF & MITERING ATTACHMENT
(SIDE MOUNT)

NO. 2 STD. CUT-OFF & MITERING ATTACHMENT

INDEX NO.	CATALOG NO.	DESCRIPTION	UNITS PER ASS'Y.
Ref.	090-504192	No. 2 Std. Cut-off & Mitering Attachment (20" x 20" Table)	
Ref.	090-552902	No. 2 Std. Cut-off & Mitering Attachment (24" x 24" Table)	
Ref.	090-553058	No. 2 Std. Cut-off & Mitering Attachment (26" x 26" Table)	
Ref.	090-505116	No. 2 Std. Cut-off & Mitering Attachment (30" x 30" Table)	
1	111-281093	.. Stop	1
2	091-982207	.. Screw, Soc. Hd. Cap, No.10-24NC x 1/2" (20" & 24" Tables)	1
	091-983783	.. Screw, Soc. Hd. Cap No.10-24NC x 5/16" (26" Table)	1
	091-984237	.. Screw, Soc. Hd. Set, 1/4-20NC x 5/16" (30" Table)	1
3	091-982769	.. Screw, Soc. Hd. Cap, 3/8-16NC x 1/2" (20" & 30" Tables)	4
	091-982785	.. Screw, Soc. Hd. Cap, 3/8-16NC x 3/4" (24" & 26" Tables)	4
4	090-036823	.. Rear Slide Rod Bracket (20" Table)	1
	090-295833	.. Rear Slide Rod Bracket (24", 26", & 30" Tables)	1
5	103-204061	.. Slide Rod (20" Table)	1
	104-204011	.. Slide Rod (24" Table)	1
	091-019356	.. Slide Rod (26" Table)	1
	091-019315	.. Slide Rod (30" Table)	1
6	090-036815	.. Front Slide Rod Bracket (20" Table)	1
	090-295841	.. Front Slide Rod Bracket (24", 26", & 30" Table)	1
7	091-984237	.. Screw, Soc. Hd. Set 1/4-20NC x 5/16"	2
8	090-507112	.. Miter Attachment Sub-Assembly (20" Table)	1
	090-507104	.. Miter Attachment Sub-Assembly (24" Table)	1
	090-553041	.. Miter Attachment Sub-Assembly (26" Table)	1
	090-507120	.. Miter Attachment Sub-Assembly (30" Table)	1
9	090-036765	.. Pointer	1
10	091-990085	.. Screw, Oven Hd. Mach. No.8-32NC x 1/4" (Cad. Pltd.)	2
11	090-036724	.. Degree Plate	1
12	091-993998	.. Screw, Rd. Hd. Drive, Pk. No.4 x 1/4 Type "U"	4
13	103-203063	.. Miter Bar (20" Table)	1
	104-203013	.. Miter Bar (24" Table)	1
	091-029447	.. Miter Bar (26" Table)	1
	111-203014	.. Miter Bar (30" Table)	1
14	104-203021	.. Gauge Rod	1
15	134-174010	.. Thumb Screw	1
16	090-042540	.. Roll Pin	2
17	134-204072	.. Miter Head Pivot	1
18	090-051319	.. Handwheel	1
19	090-042292	.. Roll Pin	1
20	090-036773	.. Stud	1
21	090-405986	.. Slide Arm	1
22	090-209412	.. Miter Head	1
23	134-204106	.. Locking Stud Washer	1
24	134-204098	.. Pivot Washer	1
25	091-982363	.. Screw, Soc. Hd. Cap, 1/4-20NC x 1/2"	2

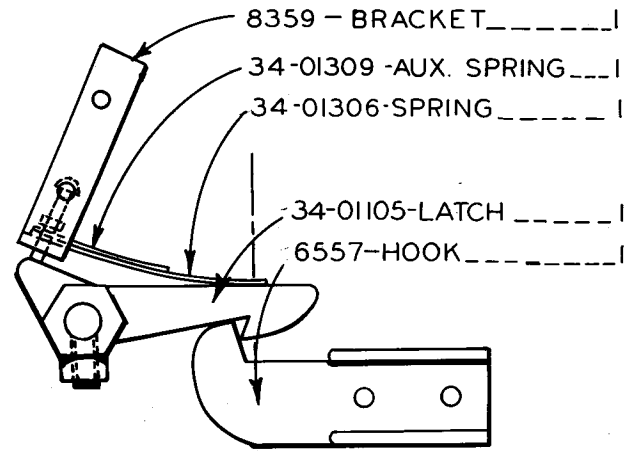
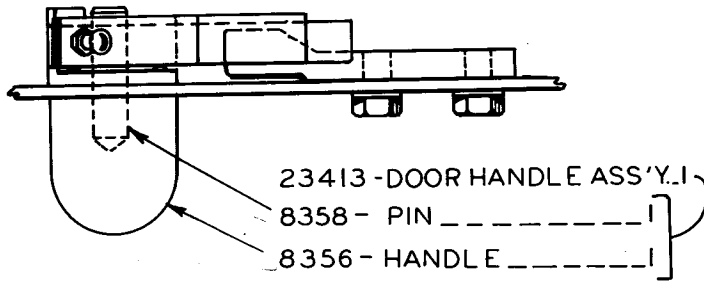


SELECT THE PROPER MOUNTING BRACKET FOR USE WITH YOUR DISC-CUTTER.

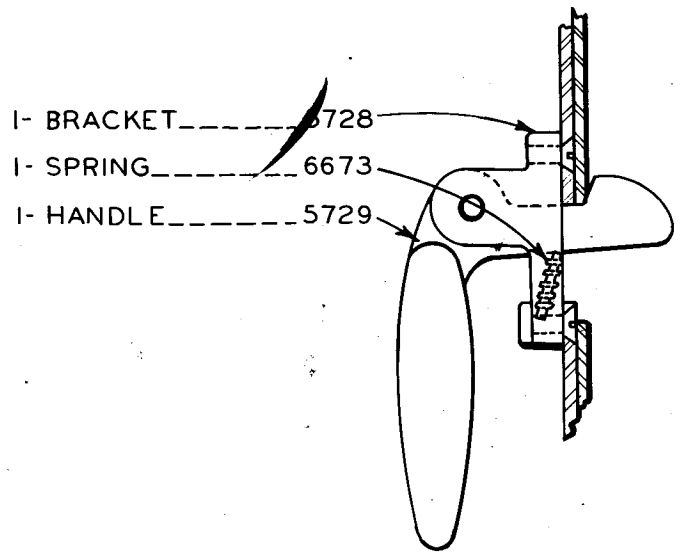
DISC CUTTER ASSEMBLY

DISC CUTTER ASSEMBLY

INDEX NO.	CATALOG NO.	DESCRIPTION	UNITS PER ASS'Y
REF.	094-020807	Disc Cutter Assembly (Contour & Contour-Matic Machines)	
REF	090-400441	Disc Cutter Assembly (Zephyr, 6013-3, 6013-H3)	
1	135-033991	. Radius Arm	1
2	105-154132	. Adjustment Screw	1
3	105-154124	. Adjustment Wheel	1
4	105-151096	. Adjustment Housing	1
5	135-034007	. Radius Arm Clamp	1
6	091-980466	. Screw, Hex. Hd. Cap 3/8-16NC x 1	3
7	091-993329	. Washer, Lock 3/8 Std.	3
8	090-042615	. Roll Pin	1
9	135-034023	. Center Pin Clamp	1
10	090-042763	. Roll Pin (Used on Ass'y #094-020807)	1
	090-042755	. Roll Pin (Used on Ass'y #090-400441)	1
11	090-390196	. Bracket (Used on Ass'y #094-020807)	1
	090-200452	. Bracket (Used on Ass'y #090-400441)	1
12	091-980292	. Screw, Hex. Hd. Cap 5/16-18NC x 1	3
13	091-993238	. Washer, Lock 5/16 Std.	3
14	105-154157	. Center Pin	1
15	135-034015	. Center Adjustment Tube	1
16	091-980334	. Screw, Hex. Hd. Cap 5/16-18NC x 2 (DZ-36 Only) ..	2
	091-980318	. Screw, Hex. Hd. Cap 5/16-18NC x 1 1/2 (All other Models)	2
Following Items Not Shown:			
	134-203082	. Wrench	1
	091-980284	. Screw, Hex. Hd. Cap 5/16-18NC x 7/8 (Used Only on Ass'y #094-020807)	



UPPER DOOR LATCH ASS'Y. 23414



LOWER DOOR LATCH ASS'Y. 21842

MODEL	FIRST MACH.	LAST MACH.
16-1	48-53101	48-55209
16-2	45-53101	45-581123
	123-58101	123-60295
16-3	50-53101	50-58854
	124-58101	124-60324
26-2	54-53101	54-58390
	127-58101	127-60138

MODEL	FIRST MACH.	LAST MACH.
26-3	55-53101	55-58545
	128-58101	128-59170
60-2	56-53101	56-57108
	129-58101	129-59104
60-3	57-53101	57-58142
	130-58101	130-60106

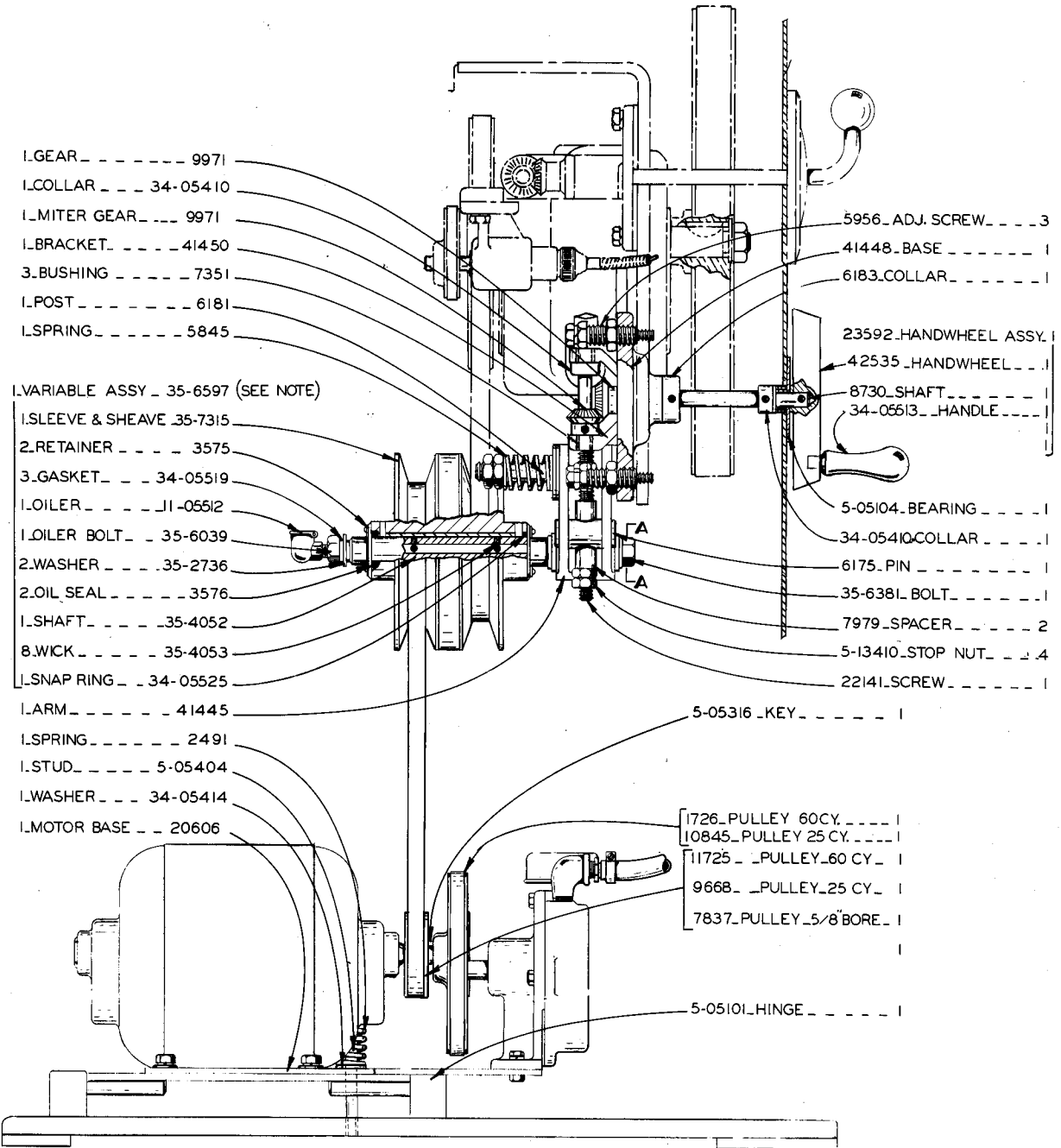
60-54 QM-1-53

PRINTED IN USA.



SET SLOT IN VERTICAL POSITION WHEN VARIABLE IS SET AT MEDIUM SPEED.

SECTION
A-A



NOTE: WHEN ORDERING MOTOR _ SPECIFY VOLTAGE PHASE AND CYCLE.

WHEN ORDERING BELTS GIVE MODEL OF MACHINE AND OUTSIDE DIAMETER OF BELTS.
 35-6597-PULLEY REPLACED BY 34-05000.

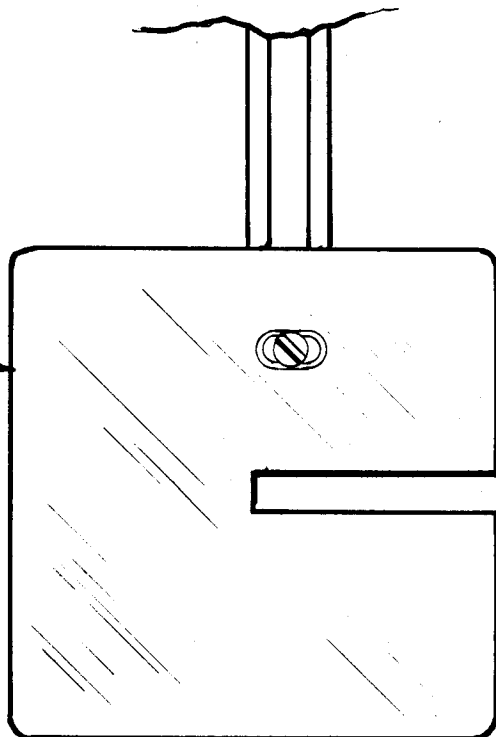
MODELS 16-2, 36-2
 VARIABLE DRIVE ASSEMBLY

MODEL	FIRST MACH	LAST MACH
D-ALL16-2	45-53101	45-581123
36-2	52-53101	52-58451

*NOTE: BEFORE 2-14-46 FILLER PLATE & FILING PLATE MUST BE REPLACED AT SAME TIME.

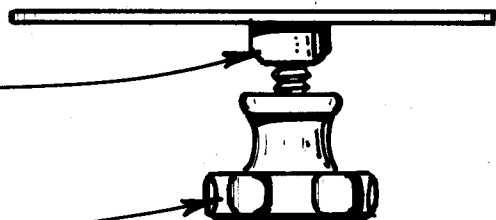
**NOTE: BETWEEN SERIAL NO'S V26 26431075 & 26512420 & V60 604394 & 6051116, ORDER-35-3805 AUX. TABLE FILING PLATE.

*I-FILING PLATE 35-3802



I-FILLER PLATE
FOR TABLE WITH 1" SLOT . . . 35-3803
FOR TABLE WITH 1-1/4" SLOT . . . 35-3798

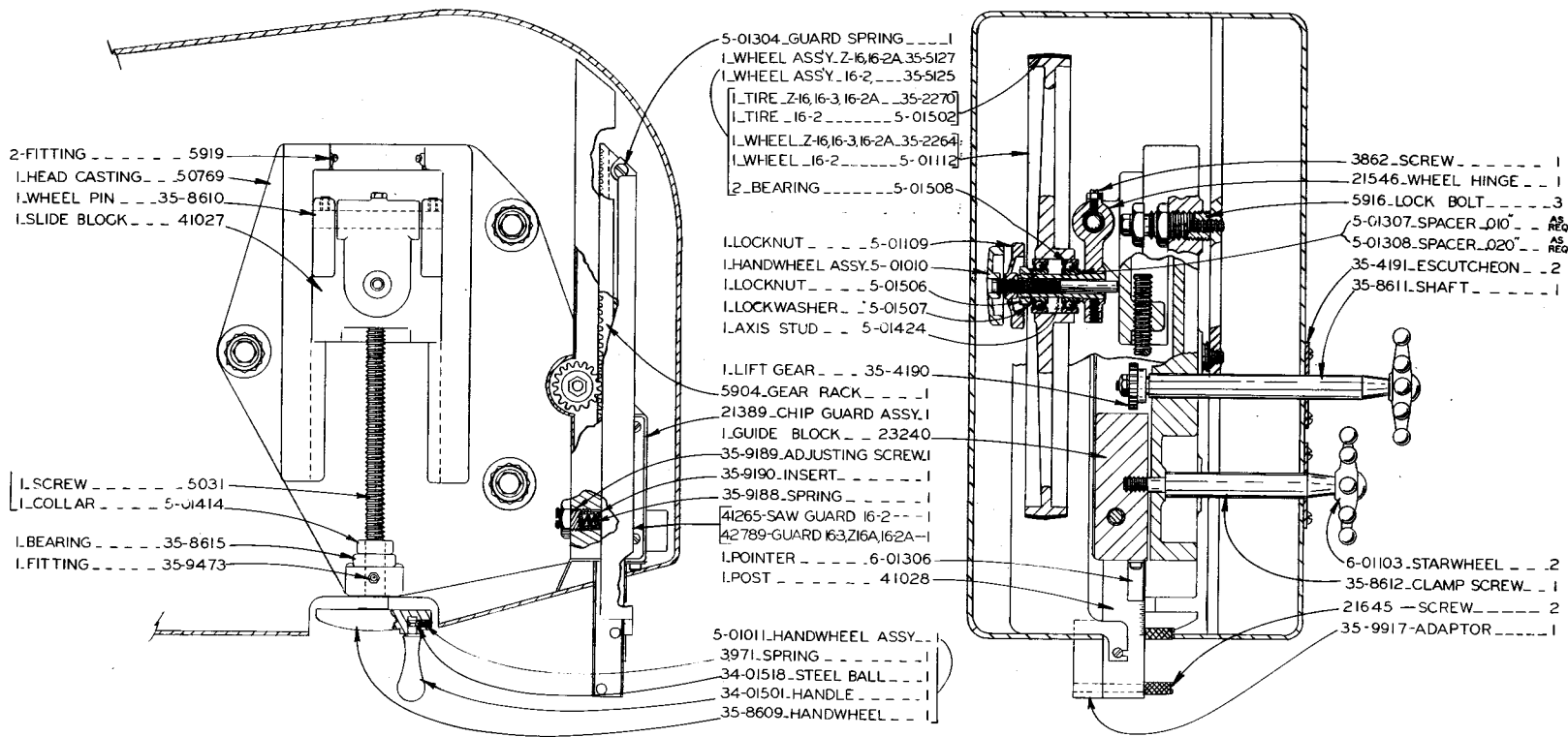
I-HANDWHEEL AND STUD ASSY.
FOR TABLE WITH 1" SLOT . . . 5-03005
FOR TABLE WITH 1-1/4" SLOT . . . 13-03003



FIRST UNIT 4-11-38

FOR 1" FILLER PLATE . . . 35-3804
FOR 1-1/4" FILLER PLATE . . . 35-3805**

AUXILIARY TABLE FILING PLATE

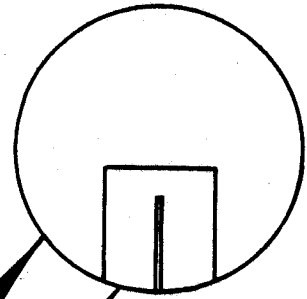
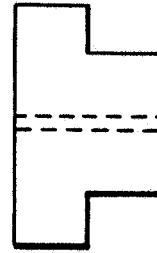
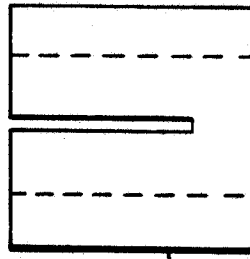
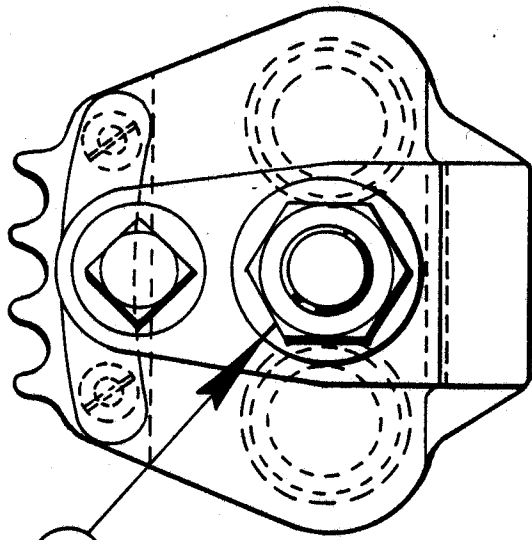


C-2-B CM-2-1 Z-2-1

PRINTED IN USA

MODELS DoALL 16-2, 16-3, Z-16A, 16-2A
 HEAD ASSEMBLY

MODEL	FIRST MACH	LAST MACH
16-2	45-53101	██████████
16-3	50-53101	50-55359
Z-16	67-53101	67-55124
16-2A	75-54101	75-55133



3

1

2

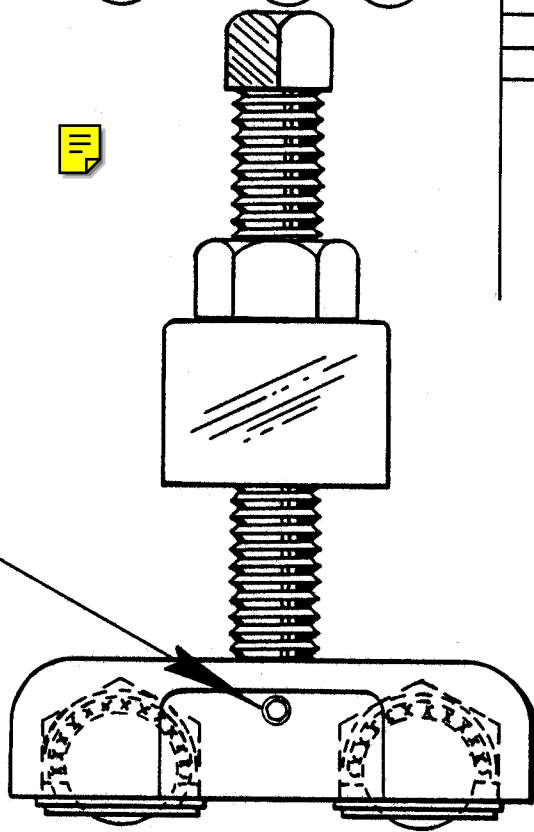
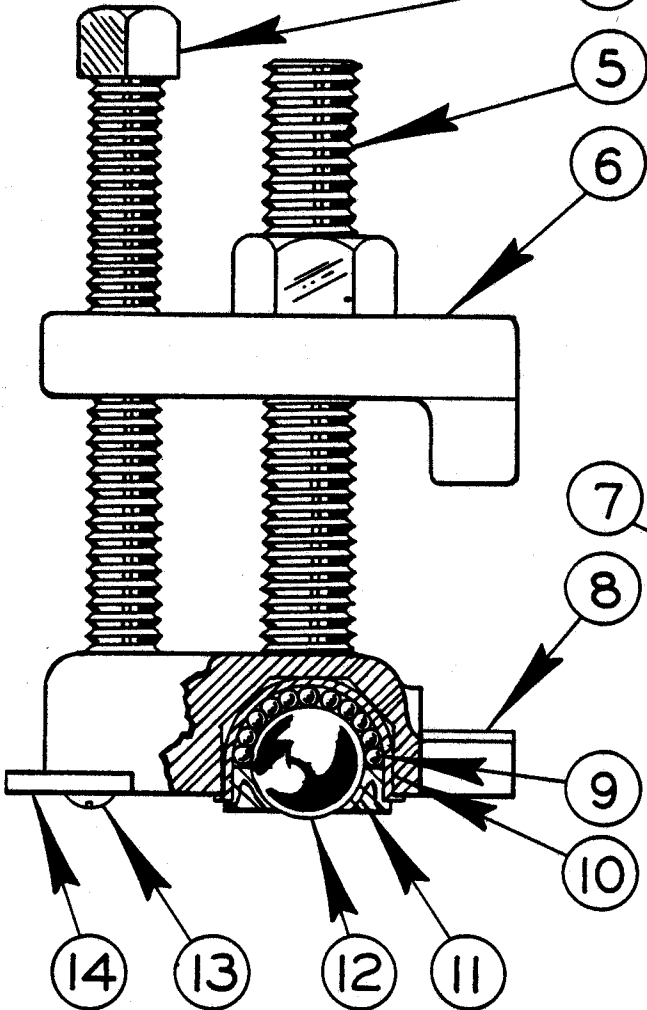
1

REDRAWN SW. 5 - 12 - 78
REVISIONS

4

5

6



FIRST MACHINE 4-11-1938
LAST MACHINE 8-12-1968

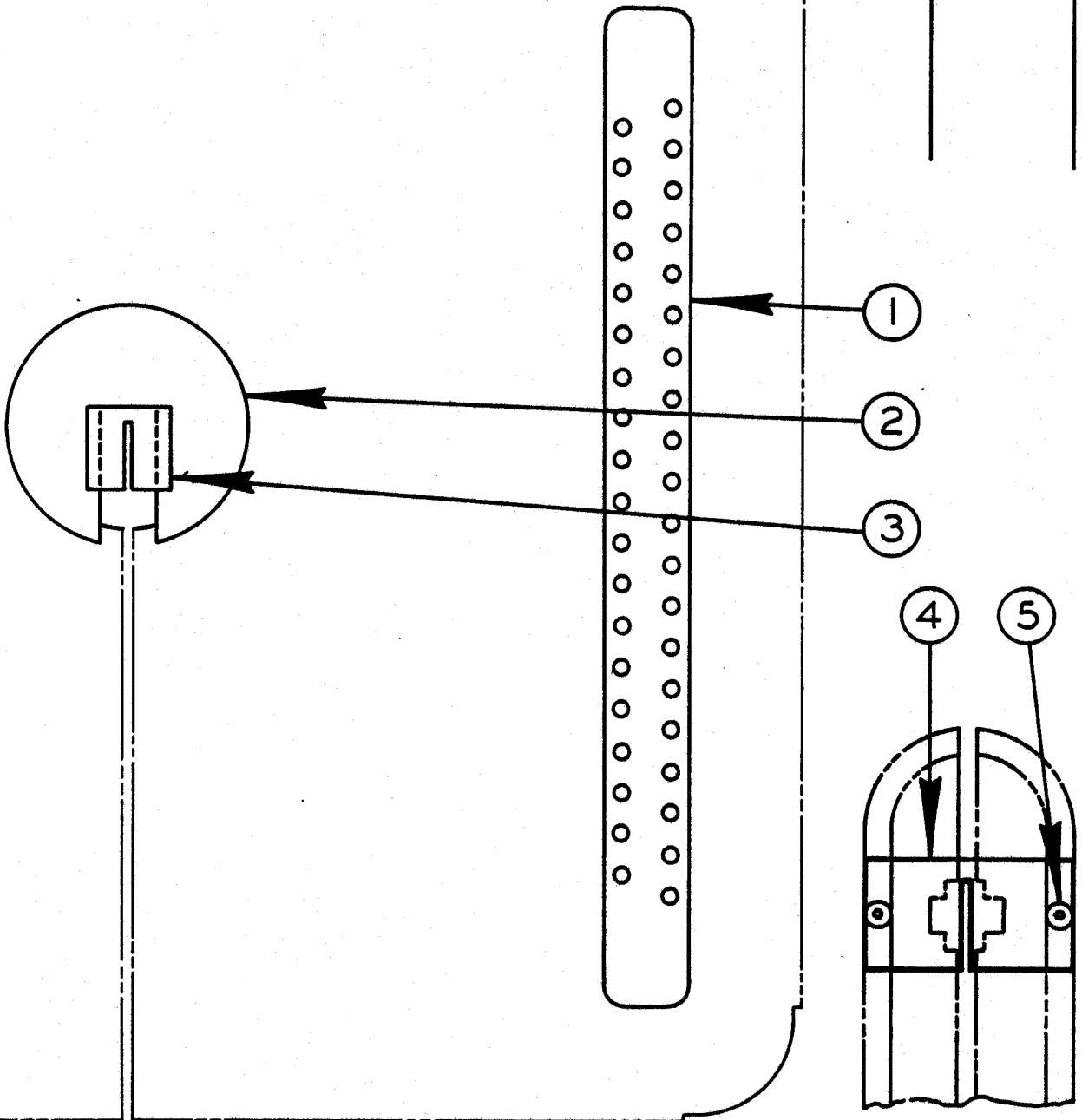
HEAVY PARALLEL WORK CLAMP ASSEMBLY

C-10-22 CM-10-13 Z-10-11

PRINTED IN U.S.A.

HEAVY
PARALLEL WORK CLAMP ASSEMBLY

INDEX NO.	CATALOG NO.	DESCRIPTION	UNITS PER ASS'Y
Ref.	106-240047	Parallel Work Clamp Assembly	
1	106-244130	. Center Support (1" Slot)	Use
	135-008787	. Center Support (1-1/4" Slot)	One
2	090-279506	. Center Plate (4-1/2" Dia.)	1
Ref.	135-051746	. Parallel Work Clamp Sub-Assembly	4
3	091-991356	. . Nut, Hex. 5/8-11NC	1
4	106-245087	. . Screw, Sq. Hd. Set	1
5	106-244155	. . Clamp Stud	1
6	106-243074	. . Parallel Arm Weldment	1
7	091-984112	. . Screw, Soc. Hd. Set #10-24NC x 3/8.....	1
8	106-241078	. . Clamp Body	1
9	106-245053	. . Ball	130
10	106-243066	. . Ball Cup	2
11	135-037976	. . Ball Retaining Ring	2
12	106-245046	. . Ball	2
13	091-988691	. . Screw, Rd. Hd. Mach. #10-24NC x 1/2	2
14	105-133136	. . Work Holding Jaw Sprocket (1/2" Pitch)	Use
	106-233372	. . Work Holding Jaw Sprocket (3/16" Pitch)	One



HEAVY WORK SLIDES

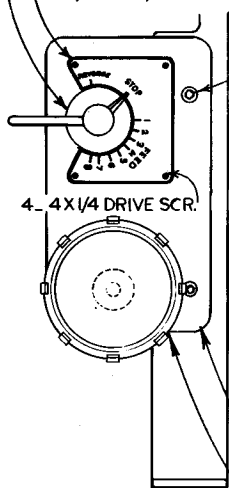
HEAVY WORK SLIDES

INDEX NO.	CATALOG NO.	DESCRIPTION	UNITS PER ASS'Y
Ref.	090-450040	Heavy Work Support Assembly (1612, 1612-0, 1612-1, 2013, 2013-0, 2013-10, 2612-1, 2614-1, 3612, 3612-1, 3613-0, 3613-10, 3613-1, 2013-1)	
Ref.	135-052470	Heavy Work Support Assembly (1613-2, 2613-2, 3613-2, 6013-2, ZS-3620, ZV-3620, ZW-3620)	
Ref.	094-006921	Heavy Work Slide Assembly (2612-2H)	
1	106-233190	. Work Transport Bar	2
2	090-279506	. Center Plate (Assembly #090-450040 Only)	1
3	106-234529	. Center Support (Assemblies #090-450040 & 135-052470)	1
4	091-178145	. Center Support (Assembly #094-006921 Only)	1
5	091-983205	. Screw, Fl Hd. Soc. Cap 1/4-20NC x 3/4 (Assembly #094-006921 Only)	2

NOTE:

* STARRED ITEMS ARE INCLUDED IN ASS'Y. 35-799 FOR 16-2
 ** MARKED ITEMS ARE INCLUDED IN CYLASS'Y. 35-662 FOR 26-2, 36-2 AND 60-2

- 1- VALVE ASS'Y. 24406
- 1- SPRING. 35-835
- 2- ELBOW. 17-13521
- 1- ELBOW. 35-318
- 1- O-RING. 35-9176
- 1- GASKET. 35-824
- 35-828- SELECTOR PLATE. 1
- 35-827- INDICATOR PLATE. 1
- 1- HANDLE. 35-822
- 2- 5/16-18X5/8 SOC. CAP SCR.



NOTE:

TO ORDER COMPLETE UNIT INCLUDING HYD. TANK ASS'Y. FOR
 16-2, 16-2A- ORDER 50944
 26-2 - ORDER 51222
 36-2-2A- ORDER 51742
 60-2 - ORDER 52172

- AS REQ. - SHIM. 35-298
- ** 1- FRONT CAP. 35-322
- 2- 5/16-18X2 1/4 SOC. CAP SCR.
- ** 2- SNAP RING. 35-466
- ** 2- COLLAR. 35-465
- ** 1- CYLINDER. 16-2. 35-796
- M 2 6-2. 36-2. 60-2. 35-457
- ** 1- STOP COLLAR. 35-459
- ** 1- PISTON BODY. 35-458
- ** 2- PISTON CUP. 35-460
- ** 1- WASHER. 35-461
- ** 2- GASKET. 35-463
- ** 1- REAR CAP. 35-477

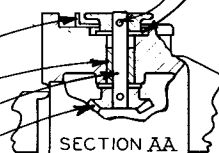
- 4- 3/8-16X1" HEX. CAP SCR.
- 4- 3/8 STD. LOC. WASHER.
- 4- 10/24X1 1/4 SOC. CAP SCR.

- 6-23519 - BEARING. 1
- 1- SHAFT- 26-2, 36-2, 60-2. 35-334
- 1- SHAFT. 16-2. 35-323
- 1- CLAMP. 35-497
- 35-829- CONTROL PANEL. 1
- 23954- HANDWHEEL. 1
- 2- GROMMET. 5847
- 2- HOSE. 5260

- 2- ROLLER ASS'Y. 35-671
- 1- ROLLER BAR. 16-2. 35-749
- 26-2. 36-2 & 60-2. 35-652
- 10/32X 1/2" RD. HD. SCR. 2
- 34-17401- THUMBSCREW. 2
- 35-5013- CHAIN ASS'Y. 1
- 35-498. TAPER PIN. 1
- 1/4-20X3/8 SOC. SET SCR. 1
- M** 1- PACKING. 35-462

- ** 1- PISTON ROD. 16-2. 35-797
- ** 26-2, 36-2 & 60-2. 35-651
- 35-464- GLAND. 1**
- 14-573- SPACER. AS REQ. **
- 35-318- ELBOW. 1**
- 35-650- BRACKET. 26-2, 36-2 & 60-2. 1
- 35-798- BRACKET. 16-2. 1
- 35-672- SPROCKET. 1
- 35-499- SHAFT. 1
- 6-23305- BEVEL GEAR. 2
- 6-23521- BEARING. 3
- 23734- SPACER. 26-2, 36-2, 60-2. 1
- 35-319- UNION. 1**
- AS REQ. WASHER. 35-993A
- 4- ROLL PIN. 4260

- 1- RETAINER. 35-673
- 2- BEARING. 4070
- 1- SHAFT. 35-478
- 2- BEVEL GEAR. 6-23306

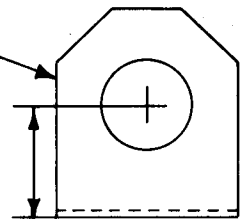


MODEL 16-2. *35-5212 MODELS 26-2, 36-2 & 60-2 *35-5214

HYDRAULIC CONTOUR FEED

MODEL	FIRST MACH.	LAST MACH.
D-362	52-53101	52-58451
D-16-2	45-53101	45-581123
D-26-2	54-53101	54-58390
D-60-2	56-53101	56-57108

BRACKET-20622-DIM. TO ϕ OF SHAFT 3 1/2"
 BRACKET-26031-DIM. TO ϕ OF SHAFT 3"



NOTE: IF PIPING IS DIFFERENT FROM DRAWING GIVE SIZE & DESCRIPTION OF FITTINGS WHEN ORDERING.

- 2-NIPPLE---35-1127
- 3-PLUG _ _ _ 6-33518
- 1-DIP STICK_ 35-846
- 1-PLUG _ _ _ 35-849
- 1-COUPLING_ _35-845

14-11505_RELIEF VALVE|

35-983_TEE _ _ _ _ |

14-115196_CONNECTOR|

2028_CROSS _ _ _ _ |

14-366 _NIPPLE _ _ _ |

5-11513_ELBOW _ _ _ |

35-897_ELBOW _ _ _ |

4102_PUMP _ _ _ _ |

20622_BRACKET _ _ _ |

26031_BRACKET _ _ _ |

SEE DETAIL ABOVE FOR CORRECT BRACKET

35-854 COUPLING|

5849_UNION _ _ _ _ |

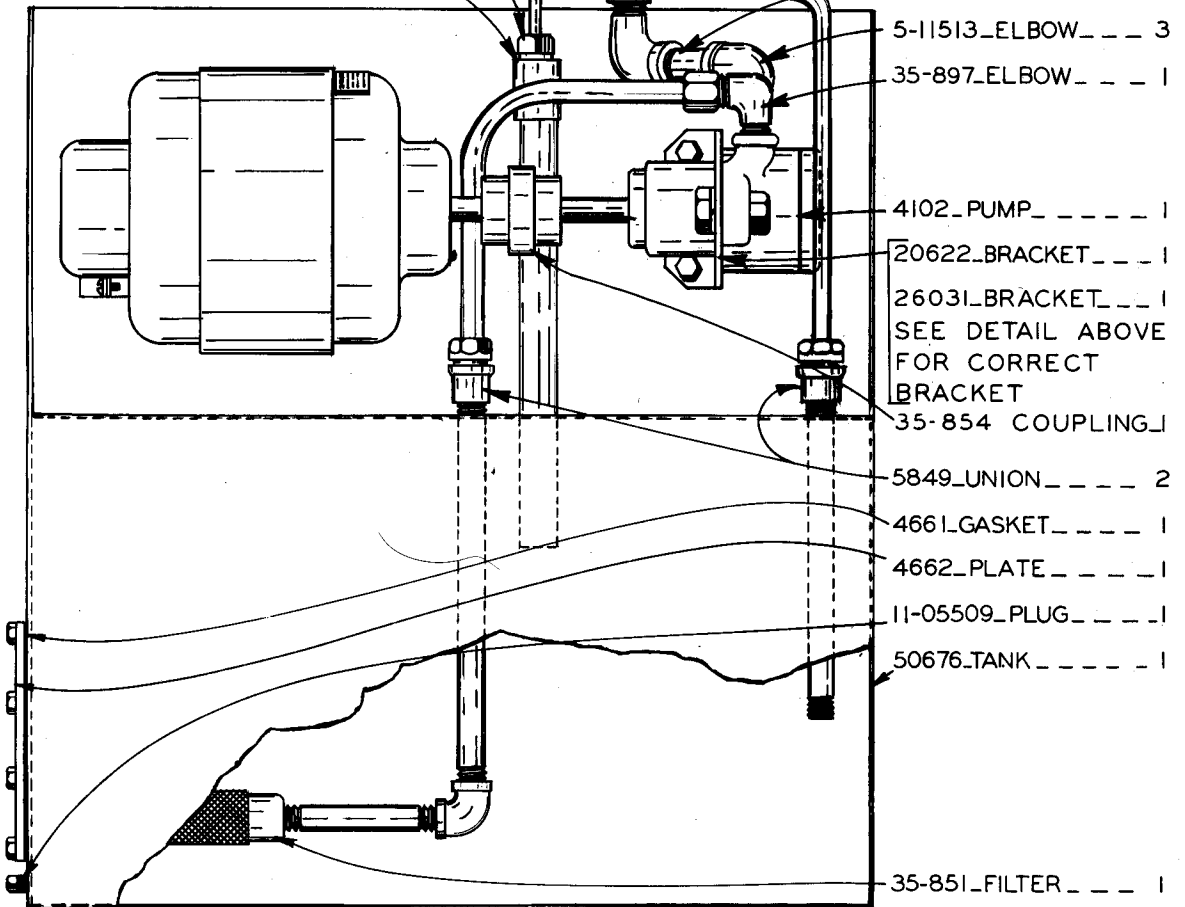
4661_GASKET _ _ _ _ |

4662_PLATE _ _ _ _ |

11-05509_PLUG _ _ _ |

50676_TANK _ _ _ _ |

35-851_FILTER _ _ _ |



* NOTE: WHEN ORDERING MOTOR SPECIFY VOLTAGE PHASE AND CYCLE.

35-5204
 HYDRAULIC TANK ASSEMBLY

FIRST UNIT 8-14-52

C-9-76, Z-8-21

PRINTED IN U.S.A.



DoALL

CONTOUR MACHINE

DoALL COMPANY DES PLAINES, ILLINOIS, U.S.A.

RECOMMENDED SPEEDS AND BAND RECOMMENDATIONS APPLY ONLY TO DoALL BAND SAW BLADES. MACHINE PERFORMANCE CAN BE NO BETTER THAN THE BAND USED.

ALL RECOMMENDATIONS SHOWN ARE TO BE USED AS A GUIDE FOR MORE INFORMATION ABOUT CUTTING RATE, BAND LIFE, ETC. CONSULT THE INSTRUCTION MANUAL.

KNIFE

FILE

ABRASIVE

DIAMOND

LINE GRIND

SPIRAL

SCALLOP

FRICITION

PRECISION

BUTTRESS

CLAW TOOTH

OPERATION OF JOB SELECTOR DIAL
1. LOCATE TYPE OF BAND MACHINING ON OUTER EDGE OF DIAL. 2. LOCATE MATERIAL DIRECTLY BELOW WINDOW. 3. SELECT SPEEDS, ETC., ACCORDING TO WORK THICKNESS.

SAW BAND RADIUS GUIDE
FOR PRECISION, BUTTRESS AND CLAW TOOTH

BAND WIDTH	1 3/4"	5/8"	1/2"	3/8"	1/4"	3/16"	1/32"
	1/16"	3/16"	1/8"	3/16"	1/8"	3/16"	1/8"

COOLANT
L-LIGHT M-MEDIUM H-HEAVY
P-PRECISION B-BUTTRESS SCL-SCALLOP K-KNIFE
D-DIAMOND A-ABRASIVE F2-FRITION F-FILE L-LINE GRIND (AO) (SC) S-SPIRAL

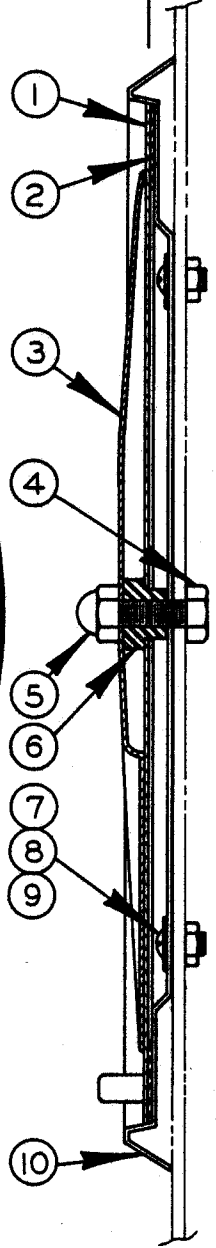
BAND PITCH
TEETH PER INCH
OP 8P 6P 3C

BAND VELOCITY
FEET / MINUTE
200 175 160 150

COOLANT DATA
USE ONE PART DoALL HD600 TO 10 PARTS OF WATER FOR GENERAL PURPOSE MIST OR FLOOD COOLANT. FOR BEST RESULTS IN TOUGH ALLOYS, STAINLESS AND NONFERROUS SEE INSTRUCTION MANUAL FOR COOLANT AND CUTTING OIL RECOMMENDATIONS.

F-FLOOD M-MIST N-NONE

WORK THICKNESS	UNDER 1/2"	1/2" TO 1"	OVER 1"
F-FLOOD	L	M	H
WORK THICKNESS	UNDER 1/2"	1/2" TO 1"	OVER 1"
M-MIST	OP	8P	6P
WORK THICKNESS	UNDER 1/2"	1/2" TO 1"	OVER 1"
N-NONE	3C		



JOB SELECTOR ASSEMBLY

C-8-104 CM-8-53 Z-6-54

PRINTED IN U.S.A.

JOB SELECTOR

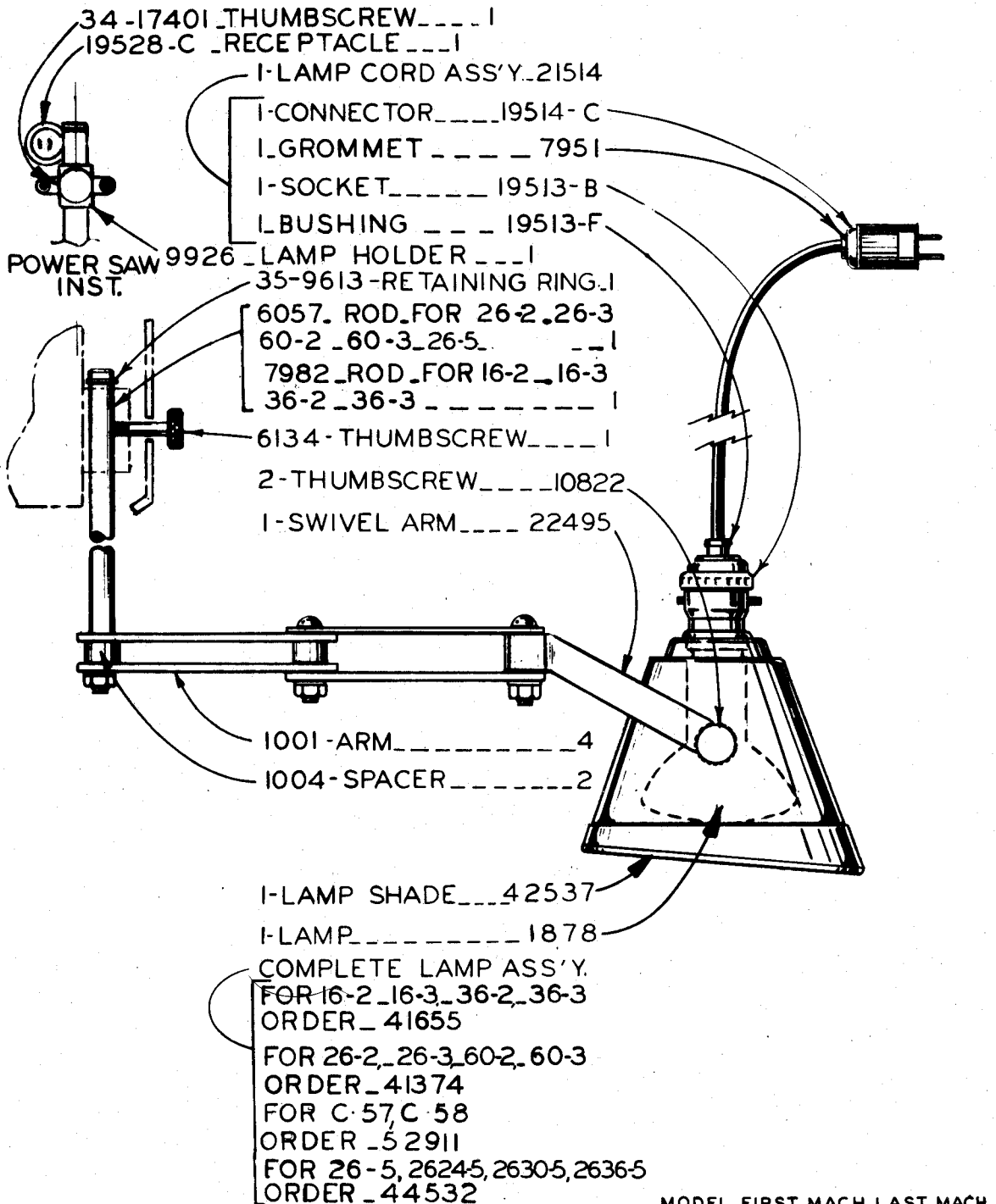
INDEX NO.	CATALOG NO.	DESCRIPTION	UNITS PER ASS'Y
Ref.	090-468174	Job Selector (1612-U, 3012-U, 1611-H, 2612-1H, 2013, 2013-0, 2012-A, 2012-AT, 1612-0, 3613-0, 1612, 3612, 2013-1, 2013-10, 2012-1A, 2012-1AT, 3612-1H, 3612-1, 3613-10)	
*Ref.	090-435603	Job Selector (1612-1, 3613-1, 2612-1, 2613-2, 6013-2, 2618-4, HS-6013, ZW-3620, ZV-3620, ZS-3620)	
1	090-220781	. Job Selector Dial	1
2	106-143043	. Outer Edge Felt	4
3	094-008380	. Job Selector Plate	1
4	091-990283	. Screw, Truss Hd. Mach. 5/16-18NC x 3/4	1
	*091-980276	. Screw, Hex. Hd. Cap 5/16-18NC x 3/4	1
5	090-044496	. Acorn Nut 5/16-18NC	1
6	106-144017	. Bushing	Use
	*090-027012	. Bushing	One
*7	091-988907	. Screw, Rd. Hd. Mach. 1/4-20NC x 1/4	4
*8	091-993741	. Washer, Lock Shakeproof 1/4 Internal	4
*9	091-991141	. Nut, Hex. Jam 1/4-20NC	4
*10	090-426727	. Job Selector Frame	1

NOTE: Job Selectors #090-468174 & #090-435603, First Used 9/17/62. Before This Date #094-008380 Plate and #090-220781 Dial, Must Be Replaced Together As A Unit.

*NOTE: Starred Items Used Only On Assembly #090-435603.

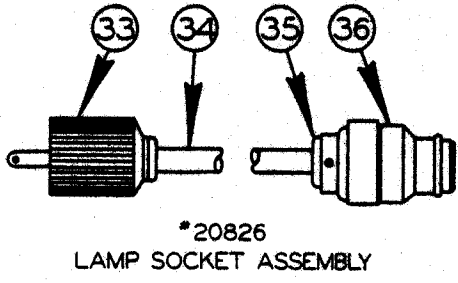
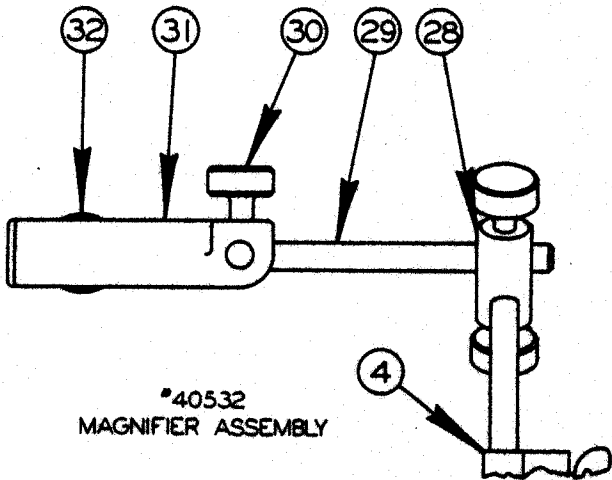
*NOTE: Last Used On Models:

MODEL	LAST MACH.
1613-2	150-69593
3613-2	151-69515
1612-3	152-691017
2613-3	198-69361
3612-3	153-691054
6013-3	199-70125
1612-H	288-69204
2612-H	284-69135
2612-2H	206-69308
3612-H	272-69152

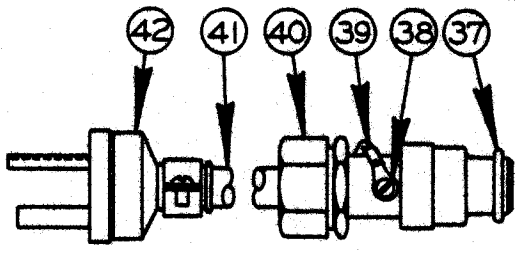
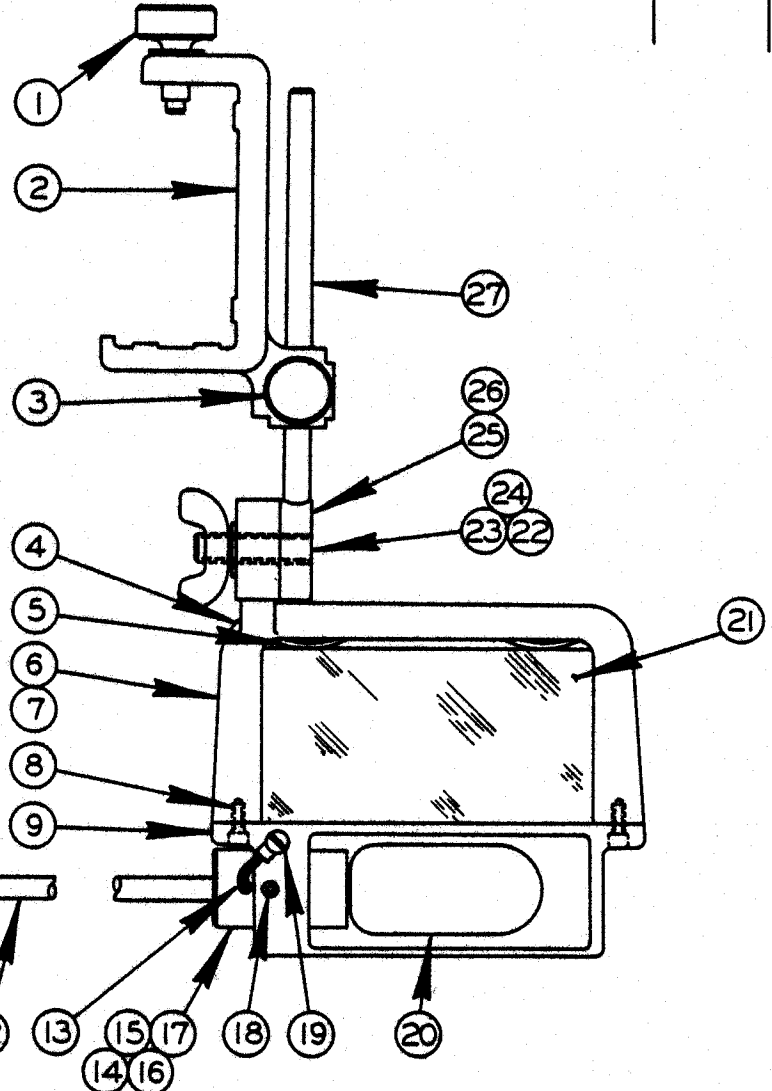
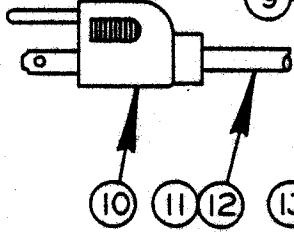


LAMP ASSEMBLY

MODEL	FIRST MACH	LAST MACH
16-2	123-58101	123-60295
16-3	124-58101	124-60324
26-2	127-58101	127-60138
26-3	128-58101	128-59170
26-5	117-58101	117-60108
36-2	125-58101	128-59183
36-3	126-58101	126-60251
60-2	129-58101	129-59104
60-3	130-58101	130-60106
C-57	96-54101	140-60207
C-58	97-54101	140-60219



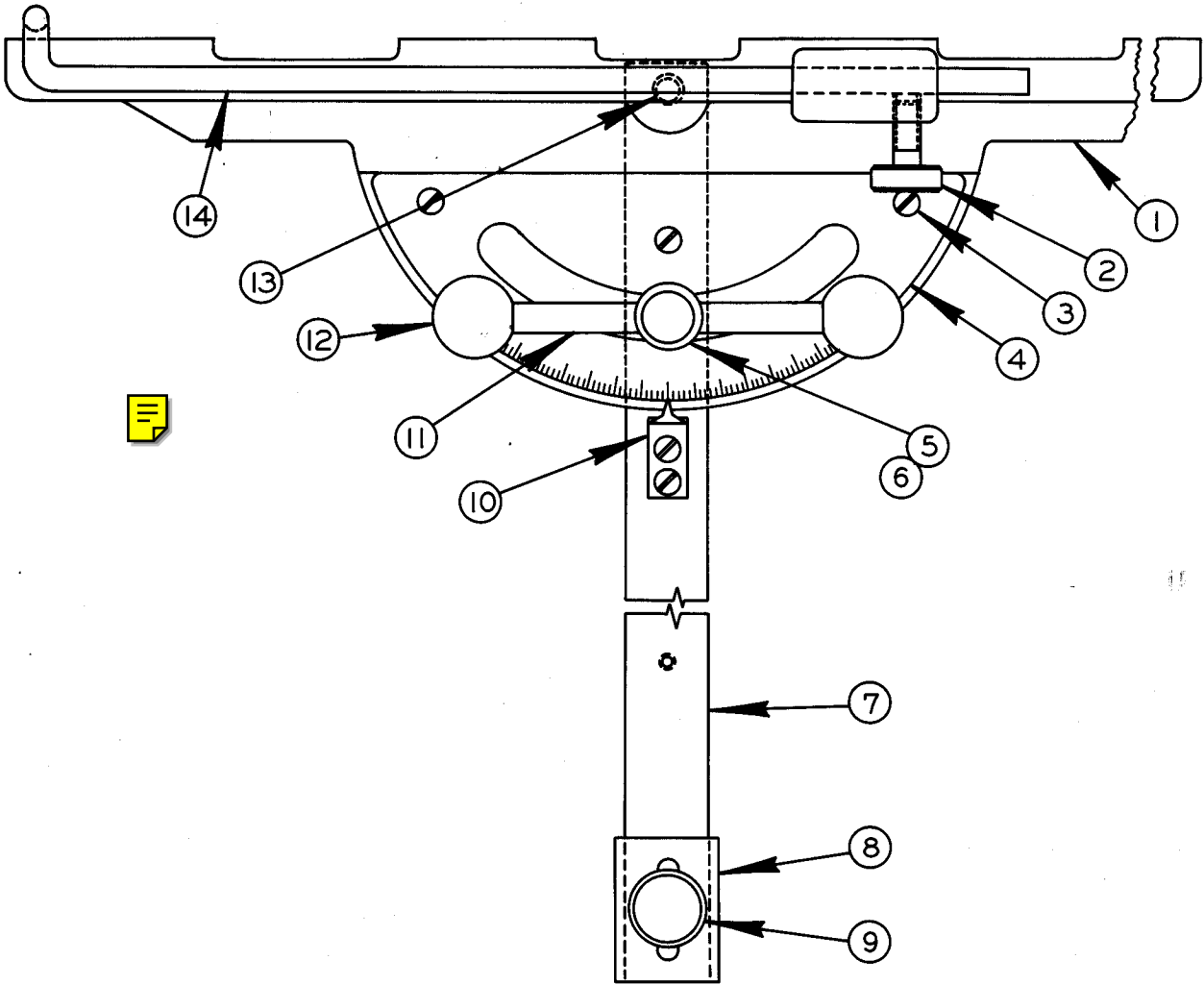
ZEPHYRS ONLY



MAGNIFIER ATTACHMENT
ASSEMBLY

MAGNIFIER ATTACHMENT ASSEMBLY

INDEX NO.	CATALOG NO.	DESCRIPTION	UNITS PER ASS'Y
Ref.	135-005551	Magnifier Attachment Assembly(1612, 1612-0, 1612-H, 1612-1, 1613-2, 1612-3, 2012-A, 2012-AT, 2013, 2013-0, 2012-1A, 2012-1AT, 2013-1, 2013-10, 2612-H, 2612-1, 3612, 3613-0, 3612-H, 3613-1, 3613-2, 3612-3, 2614-1, 2012-1H, 2012-2H, 2012-1H3, 2012-2H3, 3612-1H3, 3612-2H3)	
Ref.	090-428723	Magnifier Attachment Assembly(2613-2, 2613-3, 6013-2, 6013-3, 6013-H3, 2612-1H3)	
Ref.	090-477670	Magnifier Attachment Assembly(2618-4)	
Ref.	090-45325	Magnifier Attachment Assembly(ZS-3620, ZV-3620, ZW-3620)	
1	134-174010	Thumbnut(Ass'ys #135-005551, #090-428723, #090-477670)	1
	091-982421	Screw, Soc. Hd. Mach. 1/4-20NC x 1	2
2	093-001899	Post Clamp(Assembly #135-005551)(1-1/2"Post)	Use
	090-243932	Post Clamp(Assembly #090-428723)(2-3/4"Post)	
	090-477639	Post Clamp(Assembly #090-477670)(3-1/4"Post)	
	094-000734	Post Clamp(Assembly #090-477670)(Extra Work Height)	One
3	135-005544	Thumb Nut	1
4	090-451055	Magnifier Sub-Assembly (Assembly #135-005551, #090-428723)	Use
	090-477688	Magnifier Sub-Assembly (Assembly #090-477670)	
	090-412529	Magnifier Sub-Assembly (Assembly #090-405325)	One
5	135-021046	Lens Spring	2
6	135-052694	Magnifier Housing Sub-Assembly	1
7	135-005528	Frame	1
8	091-986901	Screw, Fil. Hd. Mach. #6-32NC x 3/8	2
9	135-005536	Housing	1
10	093-021681	Lamp Socket Assembly (Assembly #090-451055 Only)	1
11	091-305383	Electrical Cord	1
12	091-038372	Wire Terminal	2
13	091-038349	Wire Terminal	1
14	091-035360	Socket Bushing	1
15	091-338848	Socket 75-W, 125-V	1
16	091-305375	Strain Relief	1
17	091-984062	Screw, Soc. Set #8-32NC x 1/4	1
18	091-984104	Screw, Soc. Set #10-24NC x 1/4	1
19	091-988519	Screw, Rd. Hd. Mach. #8-32NC x 1/4	1
20	091-338749	Lamp (Assembly #090-451055, #090-412529)	Use
	090-195124	Lamp (Assembly #090-477688)	One
21	134-175017	Magnifying Lens	1
22	135-005593	Pivot Stud	1
23	091-992628	Washer 5/16" SAE Std.	1
24	135-005627	Wing Nut	1
25	135-005601	Post Arm Swivel Sub-Assembly (Assembly #090-451055)	Use
	091-070250	Arm Assembly (Assembly #090-477688)	
	135-008761	Post Arm Swivel Sub-Assembly(Assembly #090-477688, 36" Zephyrs)	
	090-183757	Post Arm Swivel Sub-Assembly(Assembly #090-412529)	One
26	135-005585	Swivel (Assembly #135-005601, #091-070250)	Use
	135-008720	Swivel (Assembly #135-008761, #090-183757)	One
27	135-005569	Arm (Assembly #135-005601)	Use
	091-070243	Arm (Assembly #091-070250)	
	135-008712	Arm (Assembly #135-008761)	
	091-363440	Rod (Assembly #090-183757)	One
Ref.	090-405325	Magnifier Attachment Assembly(ZS-3620, ZV-3620, ZW-3620)	
28	090-031089	Joint	1
29	090-031071	Arm	1
30	135-005544	Thumb Nut	3
31	090-229030	Post Clamp	1
32	134-174010	Thumb Nut	1
Ref.	090-208265	Lamp Socket Assembly (Zephyrs)	1
33	091-353946	Midget Cord Connector	1
34	090-007923	Rubber Cord	A.R.
35	091-353888	Bushing	2
36	091-353912	Socket	1
Ref.	090-179870	Lamp Socket Assembly (2618-4 L.A. Machines)	1
Ref.	091-070268	Lamp Socket Assembly (2618-4)	1
37	090-183476	Socket	1
38	091-988519	Screw, Rd. Hd. Mach. #8-32NC x 1/4	1
39	091-038349	Wire Terminal	1
40	090-183468	Cord Grip Connector	1
41	090-007956	Rubber Cord	A.R.
42	090-162132	Plug U-Ground	1

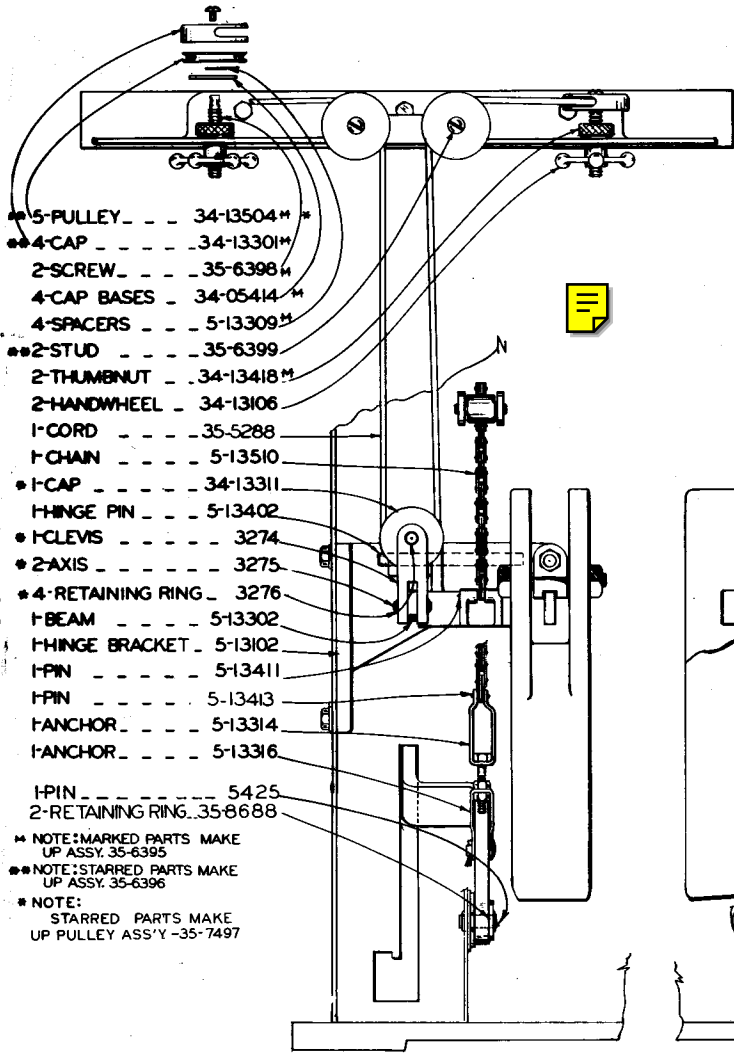


NO. 3
SLOT-TYPE MITERING ATTACHMENT

NO. 3 SLOT-TYPE MITERING ATTACHMENT

INDEX NO.	PART NO.	DESCRIPTION	UNITS PER ASS'Y.
Ref.	50663	No. 3 Slot-Type Mitering Attachment	
1	51496	. Mitre Head	1
2	34-17401	. Thumb Screw	1
3	198867	. Screw, Rd. Hd. Mach. #10-24NC x 3/8	5
4	35-1614	. Protractor Plate	1
5	11635	. Stud	1
6	199265	. Washer 7/16 Std.	1
7	22956	. Slide Bar	1
8	4709	. Stop	1
9	4708	. Thumb Screw	1
10	11633	. Pointer	1
11	11634	. Shaft	1
12	14-115183	. Knob	2
13	14-473	. Dowel	1
14	35-1976	. Gage Rod	1

NOTE: This Assembly fits all machines with 1 inch filler plate slot.



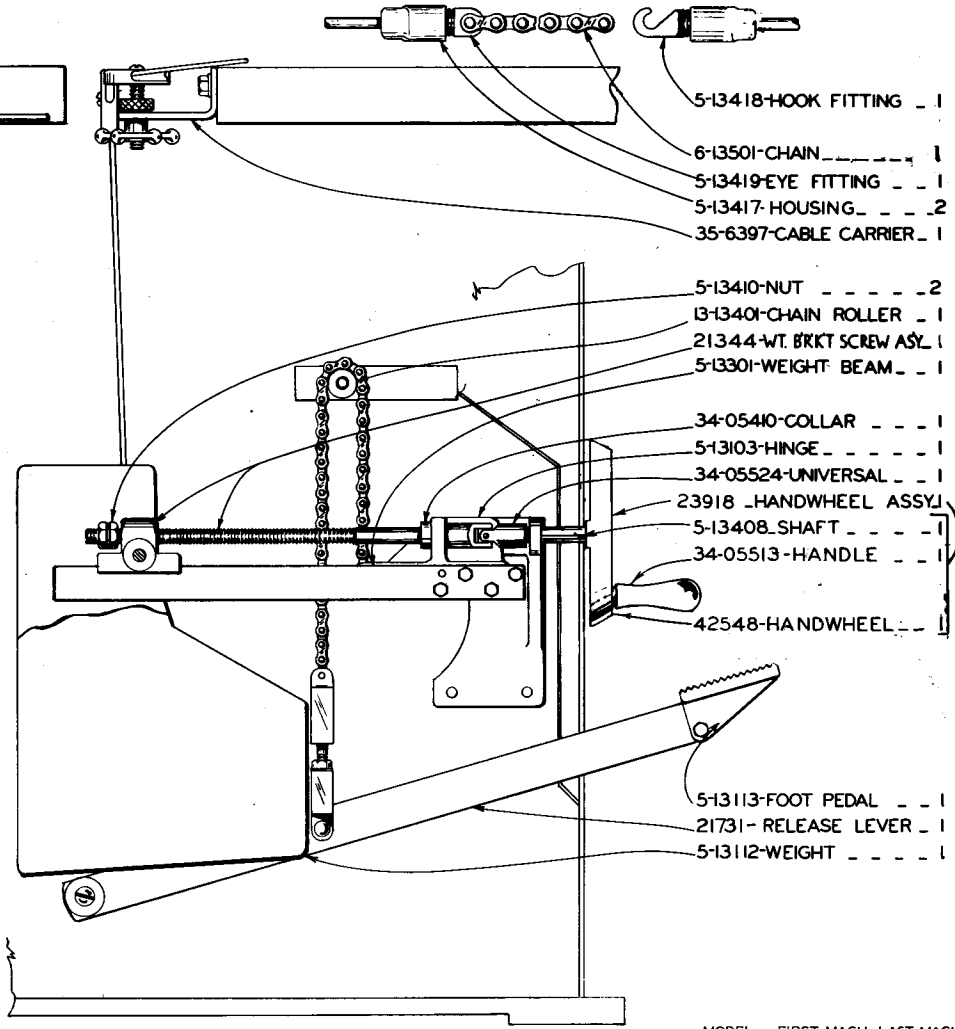
- 5-PULLEY . . . 34-13504**
- 4-CAP . . . 34-13301**
- 2-SCREW . . . 35-6398
- 4-CAP BASES . . . 34-05414**
- 4-SPACERS . . . 5-13309**
- 2-STUD . . . 35-6399
- 2-THUMBNUIT . . . 34-13418**
- 2-HANDWHEEL . . . 34-13106
- 1-CORD . . . 35-5288
- 1-CHAIN . . . 5-13510
- 1-CAP . . . 34-13311
- 1-HINGE PIN . . . 5-13402
- 1-CLEVIS . . . 3274
- 2-AXIS . . . 3275
- 4-RETAINING RING . . . 3276
- 1-BEAM . . . 5-13302
- 1-HINGE BRACKET . . . 5-13102
- 1-PIN . . . 5-13411
- 1-PIN . . . 5-13413
- 1-ANCHOR . . . 5-13314
- 1-ANCHOR . . . 5-13316

- 1-PIN . . . 5425
- 2-RETAINING RING . . . 35-8688

• NOTE: MARKED PARTS MAKE UP ASSY. 35-6395

•• NOTE: STARRED PARTS MAKE UP ASSY. 35-6396

* NOTE:
STARRED PARTS MAKE UP PULLEY ASS'Y - 35-7497



- 5-13418-HOOK FITTING . . . 1
- 6-13501-CHAIN . . . 1
- 5-13419-EYE FITTING . . . 1
- 5-13417-HOUSING . . . 2
- 35-6397-CABLE CARRIER . . . 1

- 5-13410-NUT . . . 2
- 13-13401-CHAIN ROLLER . . . 1
- 21344-WT. BRKT SCREW ASSY . . . 1
- 5-13301-WEIGHT BEAM . . . 1

- 34-05410-COLLAR . . . 1
- 513103-HINGE . . . 1
- 34-05524-UNIVERSAL . . . 1
- 23918-HANDWHEEL ASSY . . . 1
- 5-13408-SHAFT . . . 1
- 34-05513-HANDLE . . . 1

- 42548-HANDWHEEL . . . 1

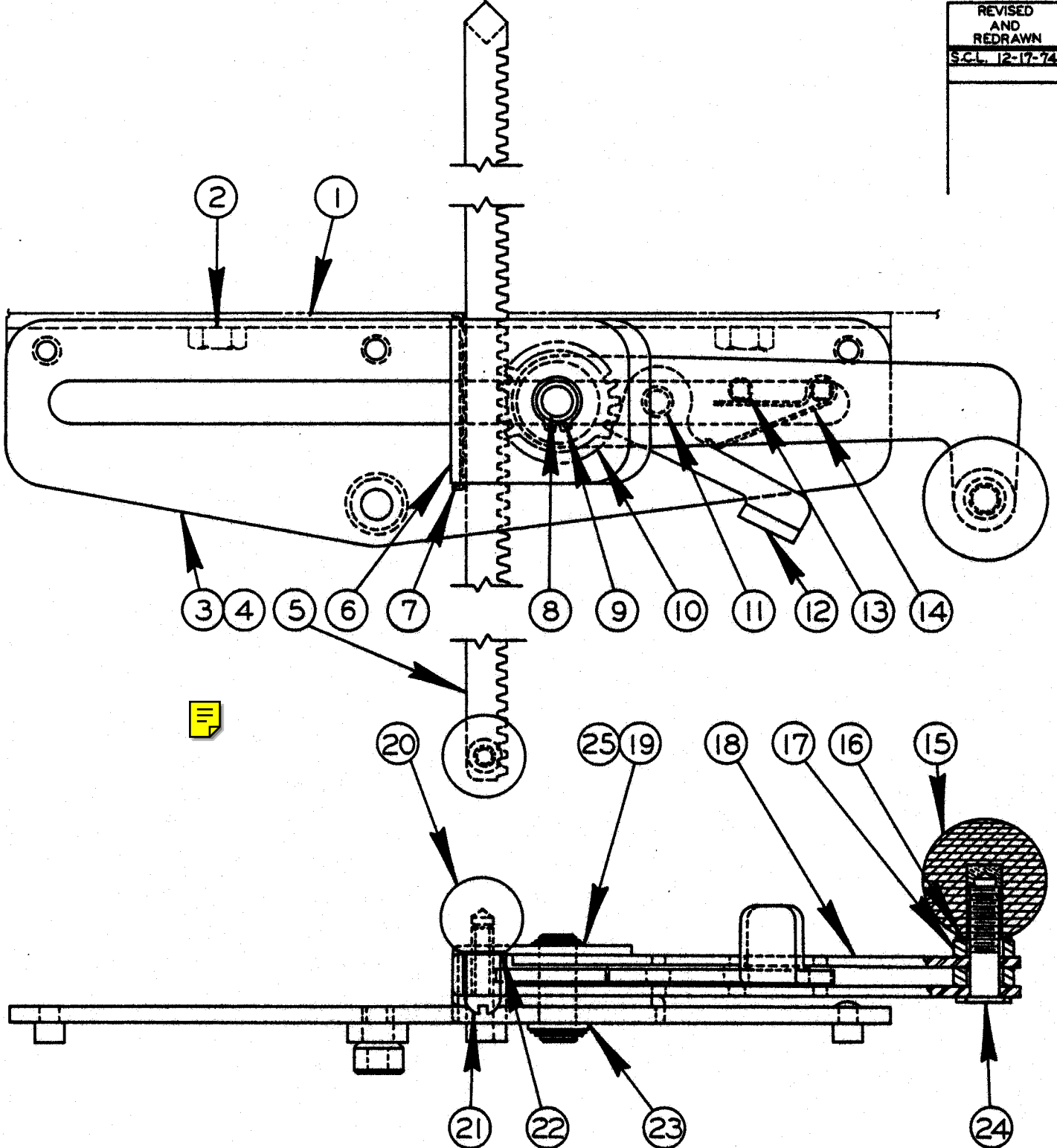
- 5-13113-FOOT PEDAL . . . 1
- 21731-RELEASE LEVER . . . 1
- 5-13112-WEIGHT . . . 1

50863
POWER FEED ASSEMBLY-MODEL - DoALL 16-2 36-1 36-2

MODEL	FIRST MACH	LAST MACH
DoALL 16-2	45-53101	45-58123
36-1	51-53101	51-58350
36-2	52-53101	52-58451
16-2A	75-54101	75-58221
36-2A	85-54101	85-58178

C-9-3

REVISED
AND
REDRAWN
SCL 12-17-74



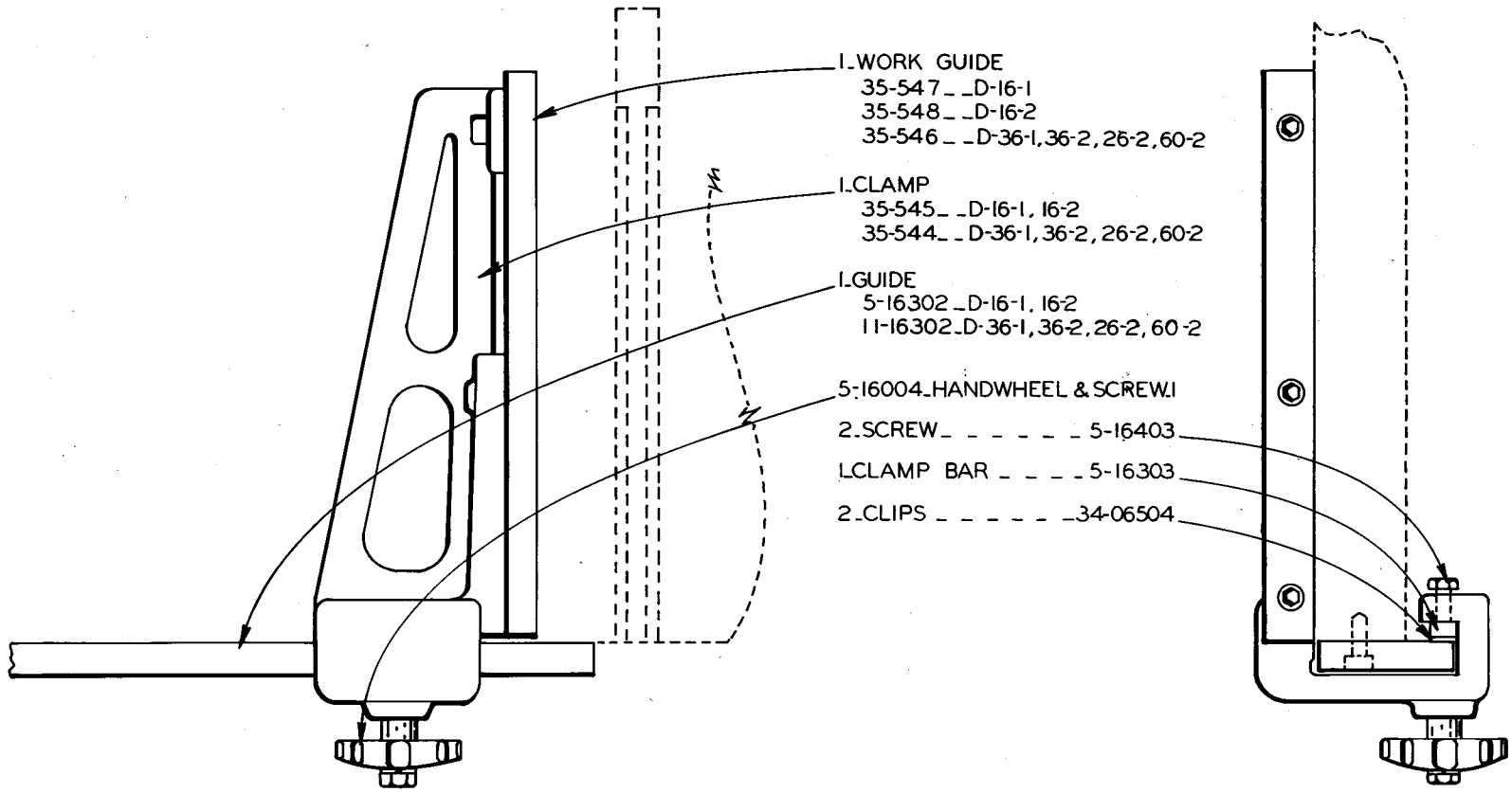
RATCHET TABLE FEED ASSEMBLY

C-10-20 CM-9-7 Z-10-2

PRINTED IN USA

RATCHET TABLE FEED ASSEMBLY

INDEX NO.	CATALOG NO.	DESCRIPTION	UNITS PER ASS'Y
Ref.	090-429788	Table Feed Assembly	
1	090-429770	. Table Feed Bracket	1
2	091-980433	. Screw, Hex. Hd. Cap 3/8-16NC x 5/8	2
3	090-400615	. Table Feed Assembly	1
4	090-408253	. . Base Plate Assembly	1
5	090-200973	. . Rack Weldment	1
6	090-013434	. . Bracket	1
7	090-013491	. . Spring	1
8	090-013442	. . Center Pin	1
9	135-096139	. . Retaining Ring	2
10	090-013459	. . Gear	1
11	090-013327	. . Spacer Pin	1
12	090-013467	. . Thumb Lever	1
13	090-013319	. . Spacer Pin	2
14	090-013509	. . Spring	1
15	134-135086	. . Knob	1
16	091-993584	. . Washer, Lock 3/8 Shakeproof Int.	1
17	090-013426	. . Spacer	2
18	090-013475	. . Arm	2
19	091-334805	. . Shim	1
20	091-339713	. . Knob	1
21	091-988980	. . Screw, Rd. Hd. Mach. 1/4-20NC x 7/8	1
22	091-993568	. . Washer, Lock 1/4" Shakeproof Internal	1
23	090-055591	. . Washer, Flat	1
24	090-044173	. . Screw	1
25	091-334813	. . Shim	1



MODELS	ASSY NO.
16-1	35-5278
16-2 16-2A	35-543
36-1 36-2 26-2 60-2 36-2A 60-2A	35-542

MODEL	FIRST MACH.	LAST MACH.
16-1	48-53101	48-55209
16-2	45-53108	45-58123
	123-58101	123-60295
16-2A	75-54101	75-58221
26-2	54-53101	54-58390
	127-58101	127-60138
36-1	51-53101	51-58461
36-2	52-53101	52-58451
	125-58101	125-59183
36-2A	85-54101	85-58178
60-2	56-53101	56-57108
	129-58101	129-59104
60-2A	112-55101	112-57102

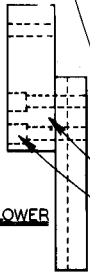
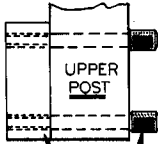
RIP FENCE ASSEMBLY

13-08303-.031 INSERT GAGE
 34-08320-.025 INSERT GAGE
 13-08307-.036 INSERT GAGE



GUIDE INSERT ASSEMBLIES
 1/16" TO 1/2" 4141
 1/16 TO 1" 4140

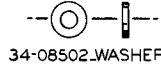
INSERTS
 1/16" 4499
 3/32" 4498
 1/8" 4497
 3/16" 4496
 1/4" 4495
 3/8" 3960
 1/2" 3959
 5/8" 3958
 3/4" 3957
 1" 3956



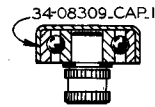
STANDARD
SAW GUIDE SET-UP
 21645 .SCREW_ _ _ _ _ 2
 35-9917 .ADAPTOR UPPER_ 1
 9768 .ADAPTOR _ _ _ _ 1
 35-1206 .SCREW _ _ _ _ 2



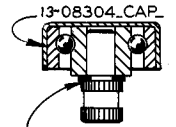
LOWER SAW GUIDE HOLDING SCREW_35-1206



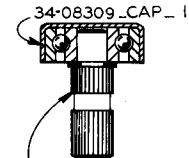
34-08502 .WASHER



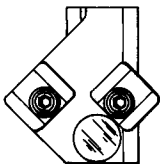
34-08309 .CAP. 1
 34-08012 .OBLIQUE GUIDE BEARING ASSY. 1



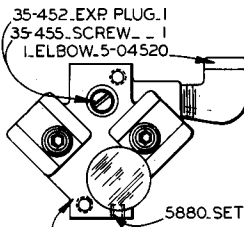
13-08304 .CAP. 1
 13-08002 .5/8" TO 1" GUIDE BEARING ASSY. 1



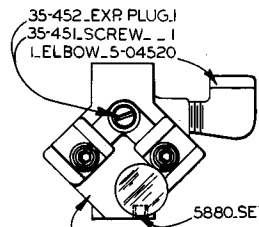
34-08309 .CAP. 1
 34-08009 .1/16" TO 1/2" GUIDE BEARING ASSY.



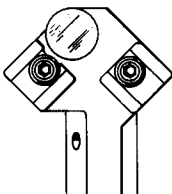
34-08008
 OBLIQUE UPPER SAW GUIDE ASSY.



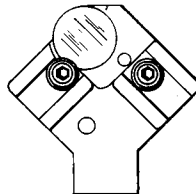
35-452 .EXP PLUG. 1
 35-455 .SCREW. 1
 1 .ELBOW. 5-04520
 5880 .SET SCREW. 1
 35-456
 5/8" TO 1" UPPER SAW GUIDE ASSY.



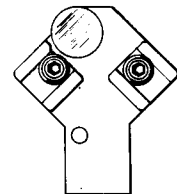
35-452 .EXP PLUG. 1
 35-451 .SCREW. 1
 1 .ELBOW. 5-04520
 5880 .SET SCREW. 1
 35-453
 1/16" TO 1/2" UPPER SAW GUIDE ASSY.



34-08013
 OBLIQUE LOWER SAW GUIDE ASSY.



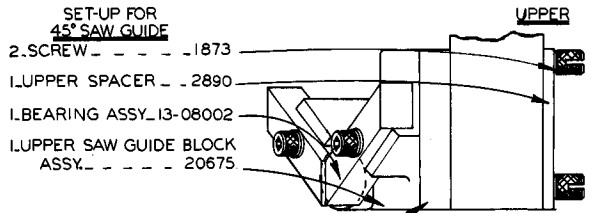
13-08006
 5/8"-1" LOWER SAW GUIDE ASSY.



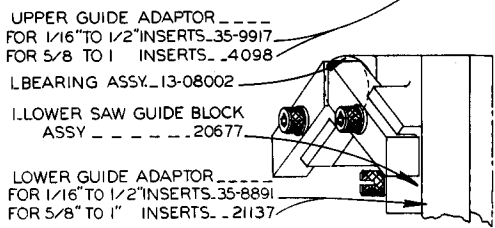
34-08005
 1/16"-1/2" LOWER SAW GUIDE ASSY.

SAW GUIDE ASSY.
 FOR ALL SPEEDS
 TO 1500 FPM

FOR MACHINES
 BEFORE 1958.

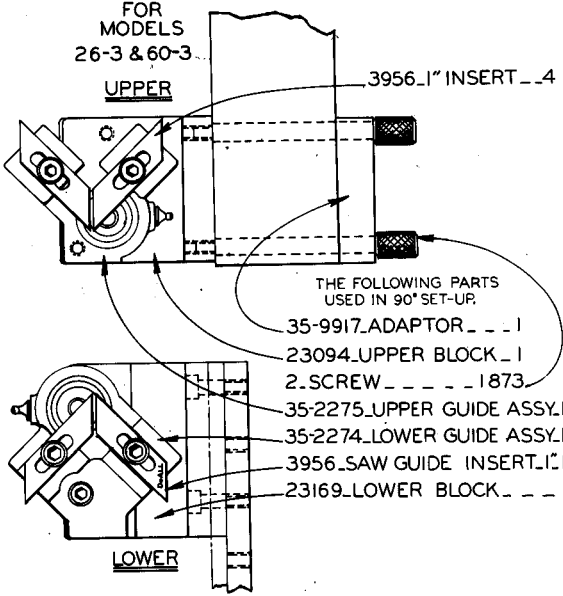


SET-UP FOR
45° SAW GUIDE
 2 .SCREW_ _ _ _ _ 1873
 L .UPPER SPACER _ _ 2890
 L .BEARING ASSY. 13-08002
 L .UPPER SAW GUIDE BLOCK ASSY. _ _ _ _ 20675

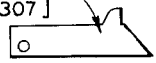


UPPER GUIDE ADAPTOR _ _ _ _
 FOR 1/16" TO 1/2" INSERTS_35-9917
 FOR 5/8" TO 1" INSERTS_ .4098
 L .BEARING ASSY. 13-08002
 L .LOWER SAW GUIDE BLOCK ASSY _ _ _ _ .20677
 LOWER GUIDE ADAPTOR
 FOR 1/16" TO 1/2" INSERTS_35-8891
 FOR 5/8" TO 1" INSERTS_ .21137

90° SET-UP
FOR
MODELS
26-3 & 60-3

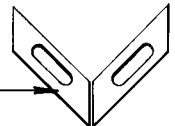


L.025.INSERT GAGE_34-08320
L.031.INSERT GAGE_13-08303
L.036.INSERT GAGE_13-08307



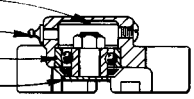
SAW GUIDE INSERT
ASSEMBLIES

- 1/16"-1/2" _ _ 4141
- 1/16"-1" _ _ 4140

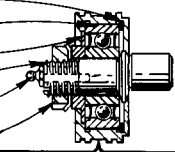


BEARING ASSY.3510079

- L.PLUG _ _ _ 35-2279
- L.FITTING _ _ 35-7508
- L.BEARING _ _ 35-2280
- L.BEARING CAP. _ 3690



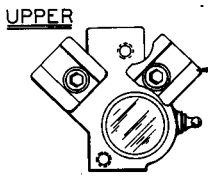
- L.RETAINING RING _ 1303
- L.BEARING _ _ _ 1779
- L.COLLAR _ _ _ 1762
- L.SPINDLE _ _ _ 1740
- L.FITTING _ _ 35-9470
- L.LOCKNUT _ _ _ 2098
- L.LOCKWASHER _ _ 2097



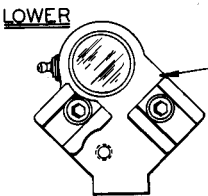
SAW GUIDE ROLLER

SAW GUIDE ROLLERS COMPLETE

SIDE ROLLER		BACKUP ROLLER	
1" 20294	1" 20297	1/4" 3185	1/4" 3186
3/4" 20293	3/4" 20296	3/8" 3237	3/8" 3236
5/8" 21072	5/8" 21071	1/2" 3173	1/2" 1763
1/2" 20292	1/2" 20295	5/8" 4620	5/8" 4619
3/8" 20807	3/8" 20808	3/4" 3174	3/4" 1764
1/4" 20799	1/4" 20298	1" 3175	1" 1765



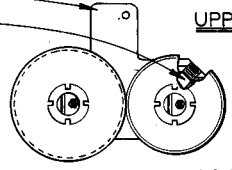
35-2275.HIGH SPEED
UPPER SAW GUIDE ASSY.



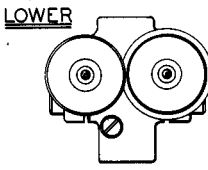
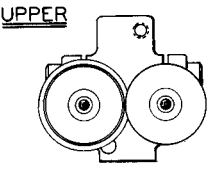
35-2274.HIGH SPEED
LOWER SAW GUIDE ASSY.

L.UPPER BLOCK _ _ 1677

L.PLUG _ _ _ 1741



UPPER



SAW GUIDE ASSEMBLIES
COMPLETE

UPPER	LOWER
1/2" 21735	1/2" 21718
3/8" 21736	3/8" 21717
1/4" 35-7506	1/4" 21716

SAW GUIDE ROLLER
ASSEMBLIES

SIDE ROLLER	BACKUP ROLLER
1/2" 35-5345	1/2" 35-5346
3/8" 35-9135	3/8" 35-9134
1/4" 35-9137	1/4" 35-9136

SAW GUIDE ASSEMBLIES
COMPLETE

UPPER	LOWER
1" 21067	1" 21061
3/4" 21066	3/4" 21060
5/8" 21065	5/8" 21059
1/2" 21064	1/2" 21058
3/8" 21063	3/8" 21057
1/4" 21062	1/4" 21056

L.CHIP DEFLECTOR _ 2140
L.SCREW _ _ _ 2967

L.LOWER BLOCK _ _ 1739

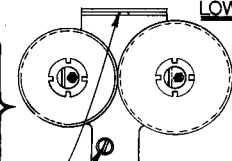
L.UPPER BLOCK _ _ 20687

35° SAW GUIDE ASSEMBLIES
COMPLETE

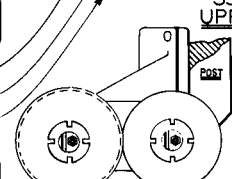
UPPER	LOWER
1" 20685	1" 20686
3/4" 21338	3/4" 21333
5/8" 21339	5/8" 21334
1/2" 21340	1/2" 21335
3/8" 21341	3/8" 21336
1/4" 21342	1/4" 21337

L.PLUG _ _ _ 1741

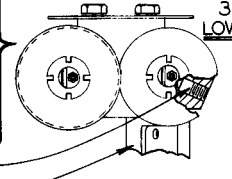
L.BLOCK _ _ _ 20688



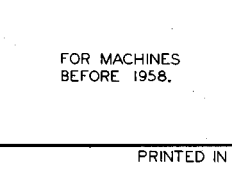
UPPER



LOWER



35°
UPPER



35°
LOWER

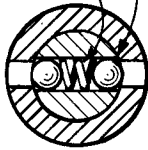
SAW GUIDE ASSY.
FOR ALL SPEEDS
ABOVE 1500 FPM

FOR MACHINES
BEFORE 1958.

*NOTE: BEFORE 5-1-42 COMPLETE SWIVEL ASSEMBLY MUST BE REPLACED.

2-STEEL BALLS - - - 5-03502

1- SPRING 5-03501



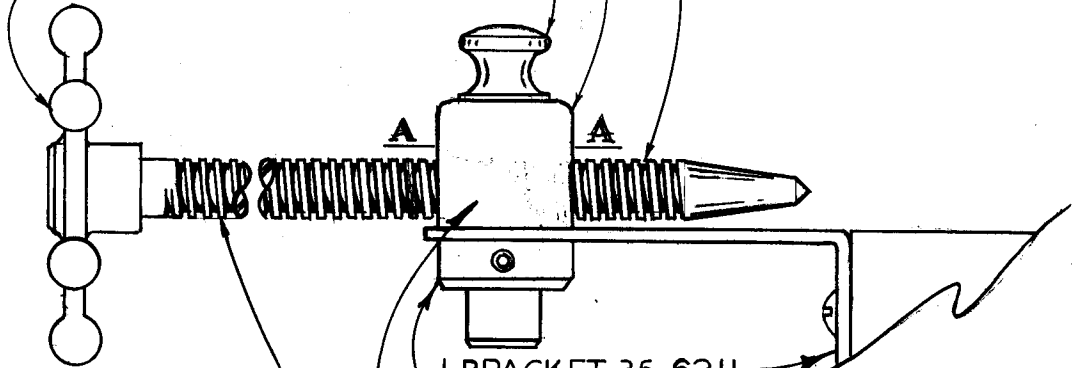
SECTION
AA

1-SCREW [13"- 34-03403]
[17"- 11-03401]

* 1-SWIVEL - - - - - 5-03401

* 1-KEY . - - - - - 5-03402

34-03106-HANDWHEEL - - - 1



1-BRACKET 35-6211

11-28418-COLLAR_1

35-5224-SWIVEL ASS'Y_1

SCREW & HANDWHEEL ASS'Y. - - - 1

[5-03004_13"LONG,_USE WITH 24"TABLE]
[11-03007_17"LONG,_USE WITH 30"TABLE]

FILLER PLATE MOUNTING
SWIVEL & SCREW ASS'Y.
WITH 13" LONG SCREW-5-03001
WITH 17" LONG SCREW-35-5442
TABLE BRACKET MOUNTING
COMPLETE ASSY-35-6212

5-03001 - - 35-5442
SCREW FEED

FIRST UNIT 4-11-38
LAST UNIT 12-31-59

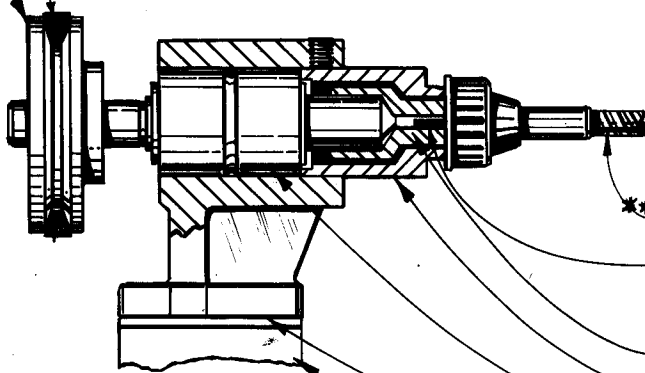
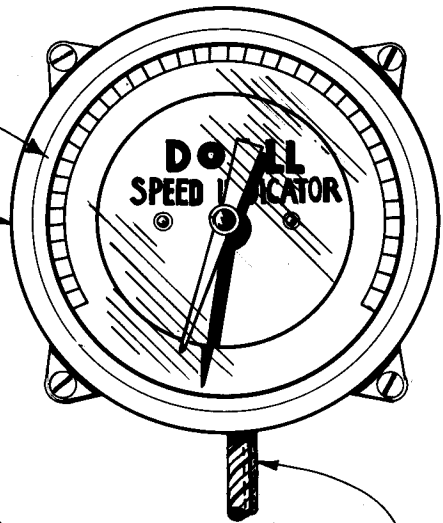
C-10-17 CM-9-6
Z-10-1

PRINTED IN U.S.A.

I- HEAD-26-3 & 60-3 ___ 41968
 I- HEAD-Z-16, Z-36 _____ 4 2917
 I- HEAD-16-3, 36-3 _____ 21095
 I- HEAD-16-2, 36-2, _____ 6-05501
 I- HEAD-26-2, 60-2 _____ 40652

I-BEZEL _____ 6-05402
 6-05505 - PULLEY-16-2, 36-2, Z-16, Z-36...

8935- BELT-----I



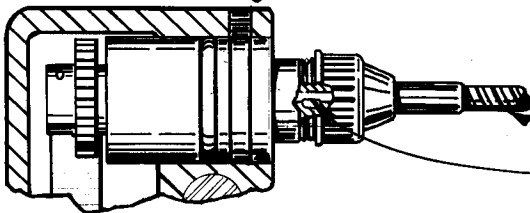
** 34-05508 - CABLE-16-2, Z-16 _____ I
 11-05502 - CABLE-36-2, Z-36 _____ I
 7832-KEY - - - - - I

6-05404 - COUPLING - - - - - *
 6-05405 - HOUSING - - - - - *
 6-05406 - BEARING - - - - - *
 41795 - BRACKET -36-2 _____ I
 34-05108 - BRACKET -16-2, Z-16, Z-36... I
 35-2300 - BRACKET -Z-36, Z-16... I

* NOTE: STARRED PARTS AND
 41795 BRACKET INCLUDED IN
 ASSY_6377_FOR 36-2

STARRED PARTS AND 34-05108
 BRACKET INCLUDED IN ASSY...
 6-05001_FOR Z-36, Z-16, 16-2,

TACHOMETER-SEE TRANSMISSION PAGE



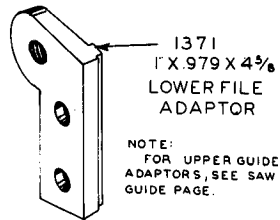
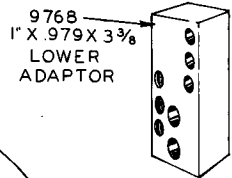
10210 - CABLE ASSY_36-3, 36-2A _ _ I
 10211 - CABLE ASSY_26-3, 16-3, 16-2A I
 9497 - CABLE ASSY_60-2, 60-3... I
 22040 - CABLE-26-2 _____ I
 7832-KEY - - - - - I

** NOTE. ORDER 7832 KEY
 WHEN ORDERING CABLES

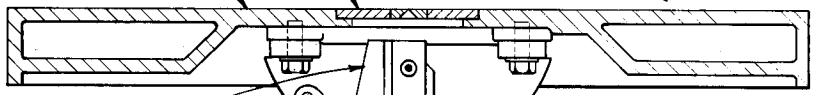
SPEED INDICATOR ASSY.

MODEL	FIRST MACH.	LAST MACH.
16-2A	75-54101	75-58221
36-2A	85-54101	85-58178
Z-36	68-53101	68-59141
16-2	45-53101	45-581123
16-3	50-53101	50-58854
36-2	52-53101	52-58451
36-3	53-53101	53-58546
26-2	54-53101	54-58390
Z-16	67-53101	67-60160
26-3	55-53101	55-58545
60-2	56-53101	56-57108
60-3	57-53101	57-58142

- I-CENTER PLATE.....3866
- I-TABLE 16-2_Z-1650801
- I-TABLE 16-1.....50800

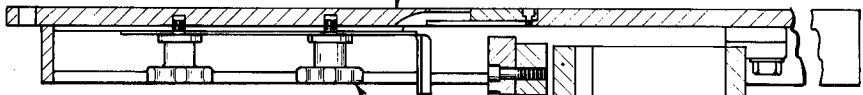


- I-LOWER POST BLOCK... 24244
- I-TRUNNION..... 40645
- I-ESCUTCHEON..... 3861
- I-POINTER..... 34-03315

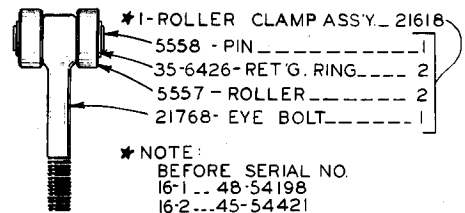


- I-FILLER PLATE..... SAWING
- 16-2_Z-16..... 35-7318
- 16-1..... 35-7322
- I-FILLER PLATE..... FILING
- 16-2, Z-16..... 35-7320
- 16-1..... 35-7319

- 40649-CRADLE..... I
- 42544-HANDWHEEL..... I
- 5178 - WORM..... I
- 5196 - SHAFT..... I
- 34-05513-HANDLE..... I



- 2-HANDWHEEL ASS'Y... 5-03005
- I- GUARD.....34-03316
- ★ I- HEAD..... 10756
- ★ I- MACHINE BOLT..... 10175



★ NOTE:
BEFORE SERIAL NO.
16-1...48-54198
16-2...45-54421
Z16...67-54116
ROLLER CLAMP ASS'Y.
21618 WAS USED IN
PLACE OF MACHINE
BOLT 10175 & HEAD
10756

- 35-1785-BEARING..... I
- 5182 - COLLAR..... I
- 5183 - SHAFT..... I
- 35-1786-COLLAR..... I
- 41073-GEAR BRACKET..... I
- 5179-GEAR..... I
- 5949- SPACER..... AS REQ.

MODEL Z16, 16-1,16-2,16-2A
TABLE & TRUNNION ASSEMBLY

MODEL	FIRST MACH.	LAST MACH.
16-1	43-33101	48-35209
16-2	45-53101	45-58123
Z-16	47-53101	47-60180
16-2	123-58101	123-60295
16-2A	75-54101	75-58221

PRINTED IN U.S.A.

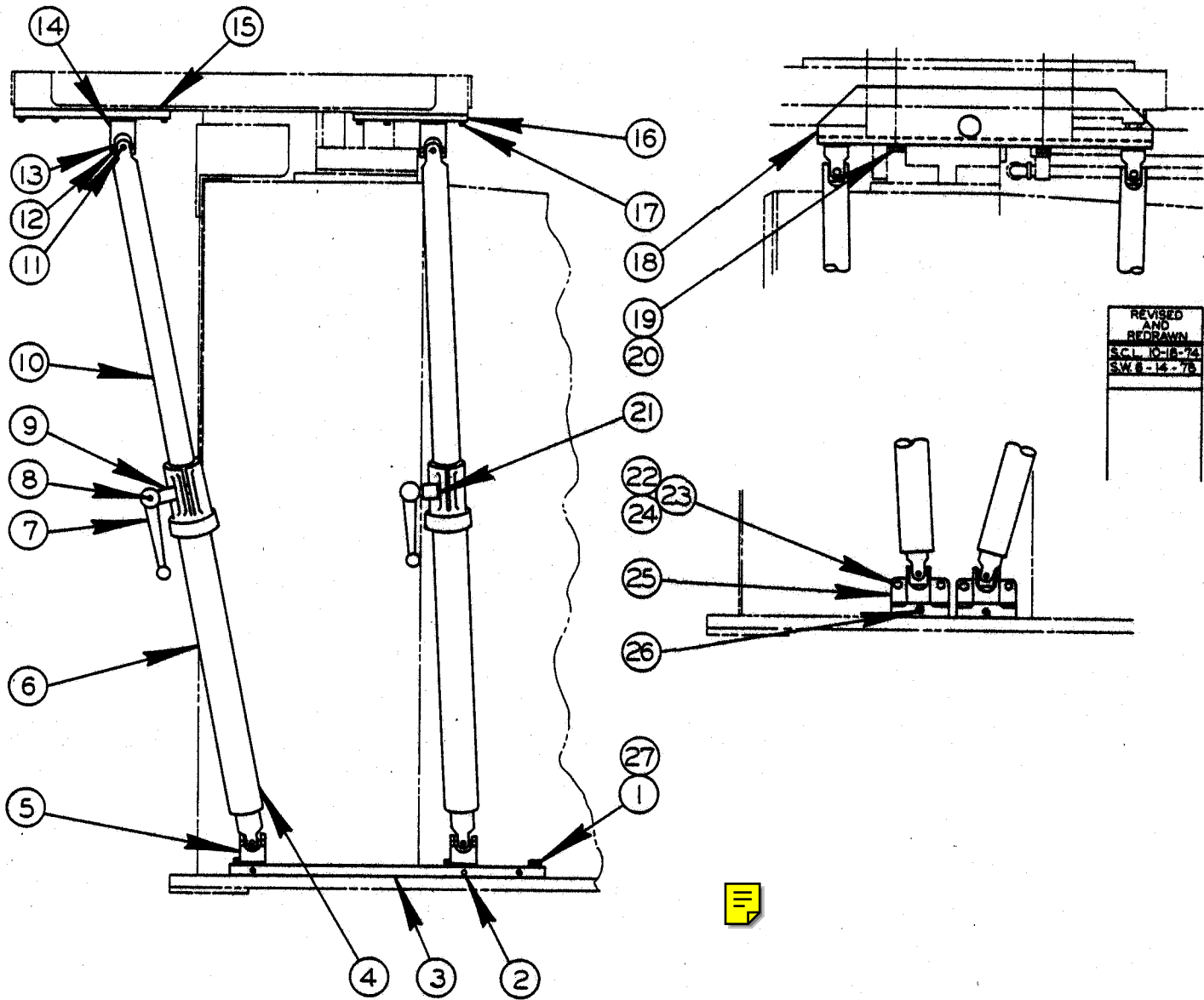
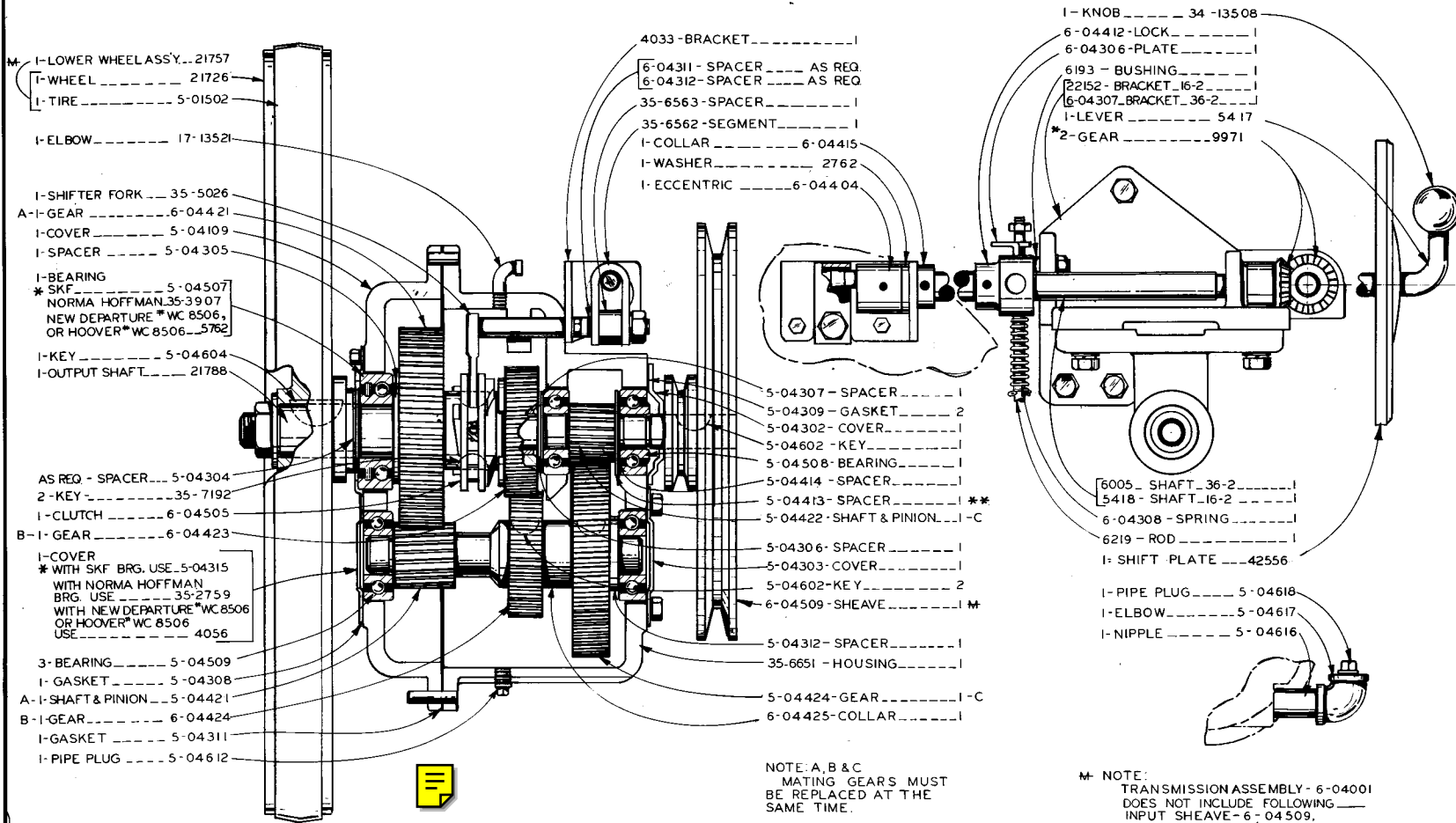


TABLE SUPPORT ASSEMBLY

TABLE SUPPORT ASSEMBLY

INDEX NO.	CATALOG NO.	DESCRIPTION	UNITS PER ASS'Y
*Ref.	090-554361	Table Support Assembly (1612, 3612, 1612-0, 3613-0, 1612-1, 2612-1, 3613-1, 1613-2, 3613-2, HS6013, 2013-1, 2013-10, 2012-1A, 2012-1AT)	
*Ref.	090-508268	Table Support Assembly (1611-H, 1612-H, 3612-H, 2612-H, 2612-1H, 2612-2H, 1612-3, 3612-3, 2012-1H, 2012-1H3, 2612-1H3, 2614-1)	
*Ref.	090-512161	Table Support Assembly (2613-2, 6013-2)	
*Ref.	090-529926	Table Support Assembly (2613-3, 6013-3, 6013-H3)	
*Ref.	117-030031	Table Support Assembly (Zephyrs, ZS-3620, ZV-3620, ZW-3620)	
1	091-980466	. Screw, Hex. Hd. Cap 3/8-16NC x 1	Use
2	091-984104	. Screw, Soc. Hd. Set #10-24NC x 1/4	One
3	090-295924	. Plate	1
*4	135-052397	. Table Support and Rod Assembly	2
5	135-008779	. . Universal Joint	1
6	135-052389	. . Table Support Tube Sub-Assembly	1
7	117-031054	. . Lock Lever	1
8	090-042599	. . Roll Pin	1
9	117-034066	. . Lock Shaft	1
10	117-034041	. . Support Rod	1
11	091-331850	. . Universal Joint Pin	2
12	091-331835	. . Universal Joint Swivel	2
13	091-331843	. . Universal Joint Swivel Pin	2
14	093-026789	. . Universal Joint Threaded End	1
15	090-304403	. Left Table Support Plate (Used on Assembly #090-554361) ...	1
16	090-304411	. Right Table Support Plate (Used on Assembly #090-554361) ..	1
17	091-982207	. Screw, Soc. Hd. Cap #10-24NC x 1/2	8
18	090-222977	. Angle Bracket (Used on Assembly #090-508268)	1
19	091-980441	. Screw, Hex. Hd. Cap 3/8-16NC x 3/4	2
20	091-992644	. Washer 3/8" Std.	6
21	091-322875	. Spacer Option List	A.R.
	135-077089	. Spacer (Used only on Assembly #090-512161)	A.R.
22	091-980458	. Screw, Hex. Hd. Cap 3/8-16NC x 7/8	4
	091-980466	. Screw, Hex. Hd. Cap 3/8-16NC x 1	4
23	091-991265	. Nut, Hex. 3/8-16NC	4
24	091-992644	. Washer 3/8" Std.	4
	091-993329	. Washer, Lock 3/8" Std.	4
25	117-031047	. Bottom Bracket	2
26	091-984237	. Screw, Soc. Set 1/4-20NC x 5/16	2
27	091-993329	. Washer, Lock 3/8" Std.	A.R.
	091-992685	. Washer 3/4" Std.	2

*NOTE: All Table Support Assemblies use Table Support and Rod Sub-Assembly #135-052397. However, Different Upper and Lower Connecting Brackets are Used. Locate on the Drawing the Brackets Used on Your Machine.



* NOTE:
 5-04316 OIL SLINGER USED
 WITH SKF 5-04507 BRG. AND
 COVER 5-04315
 9971-REPLACE BOTH
 GEARS TOGETHER...

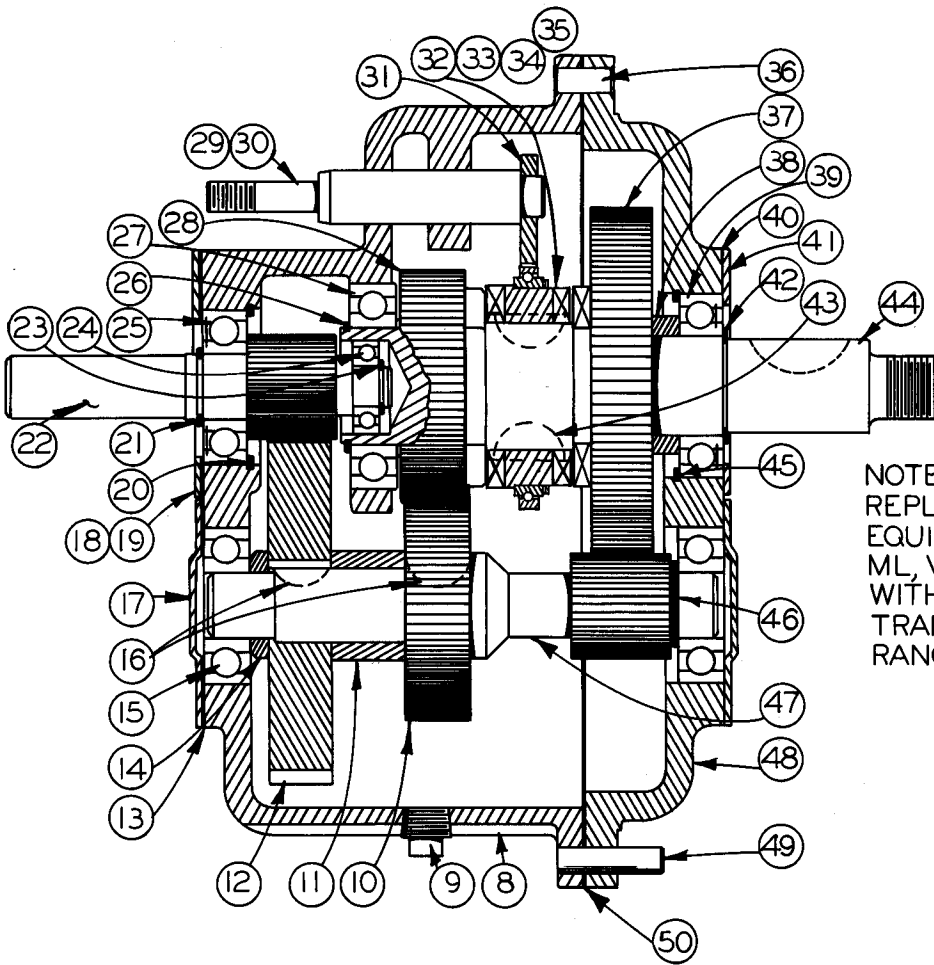
NOTE: A, B & C
 MATING GEARS MUST
 BE REPLACED AT THE
 SAME TIME.

** NOTE:
 SPACER 5-04413 USED
 WITH SKF BEARING ONLY.

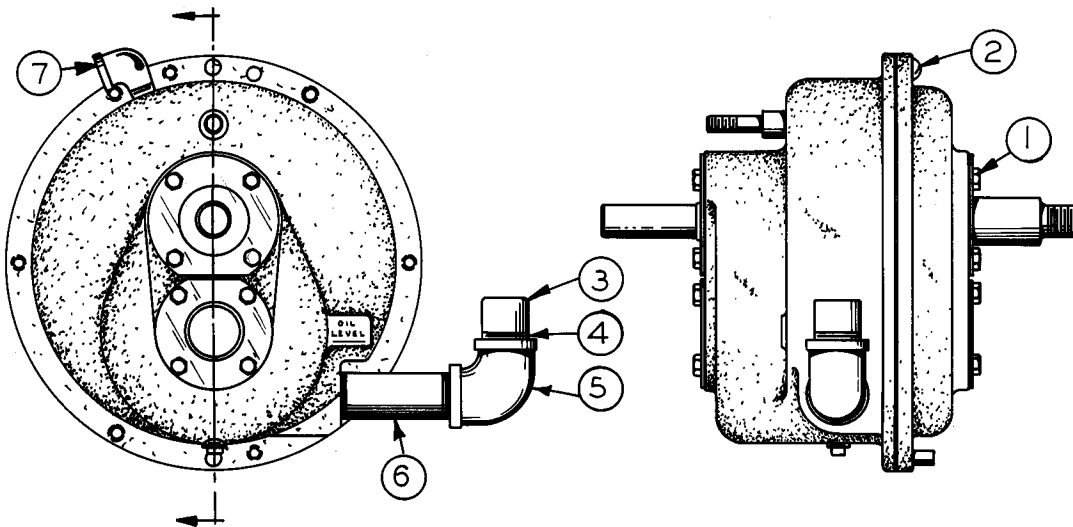
* NOTE:
 TRANSMISSION ASSEMBLY - 6-04001
 DOES NOT INCLUDE FOLLOWING —
 INPUT SHEAVE - 6-04509,
 LOWER WHEEL ASSY - 21757,
 AND SHIFTER ASSEMBLY.

2 SPEED TRANSMISSION ASSEMBLY-D6ALL 16-2 & 36-2- 6-04001 *

MODEL	FIRST MACH.	LAST MACH.
D6ALL 16-2	45-53101	45-581123
36-2	52-53101	52-58451



NOTE: THIS TRANS. ASSY.
REPLACES ORIGINAL
EQUIPMENT ON MODELS
ML, V-36, 16-2, & 36-2
WITH A TWO SPEED
TRANS. WITH SPEED
RANGES OF 50 TO 1500.

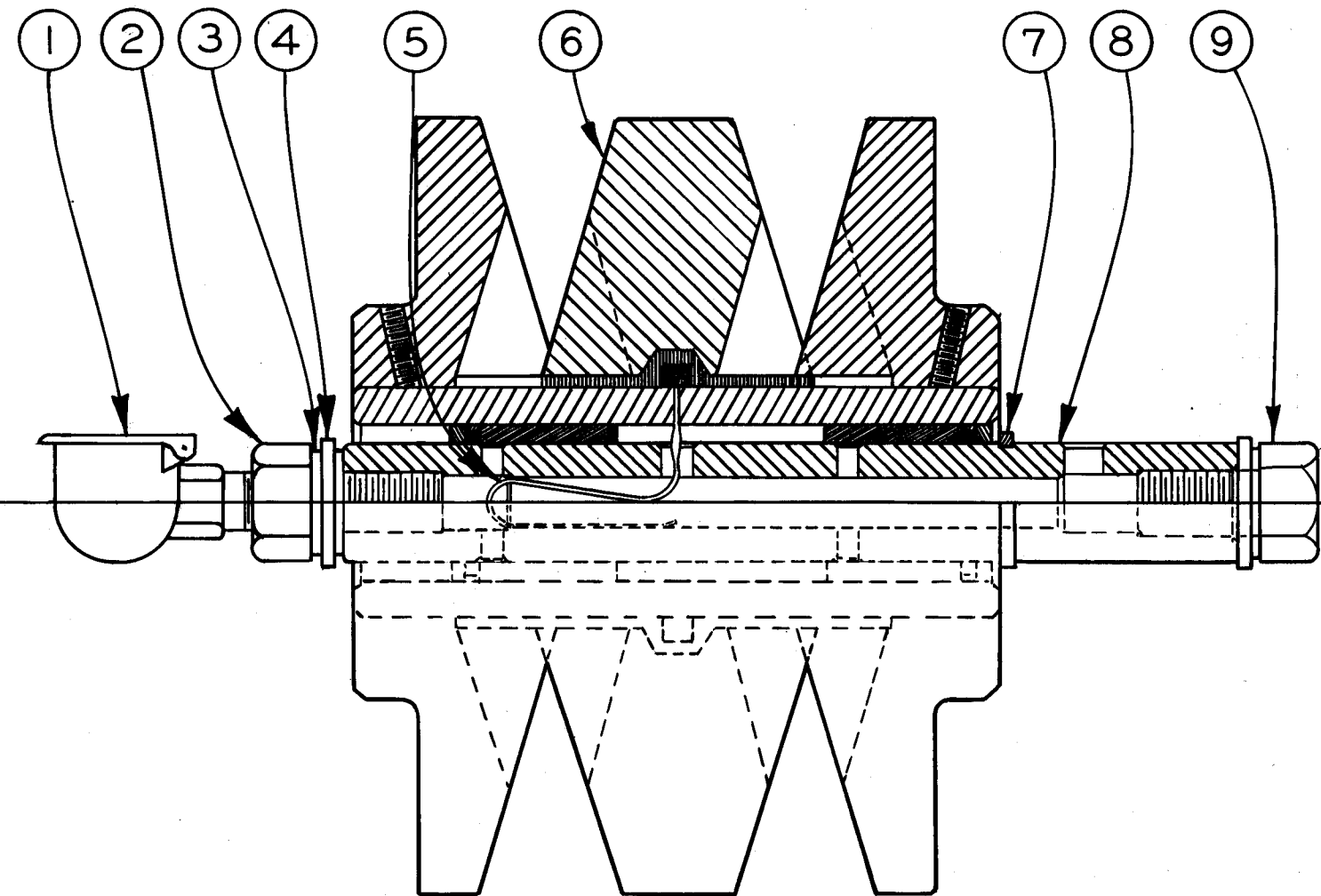


2 SPEED TRANSMISSION ASSY

2 SPEED TRANSMISSION ASSEMBLY

INDEX NO.	PART NO.	DESCRIPTION	UNITS PER ASS'Y.								
			1	2	3	4	5	6	7		
	55617	2 Speed Transmission Assembly								1	
1	Comm.	. Hex. Hd. Cap Scr. 1/4-20 x 3/8									16
2	Comm.	. Fil Hd. Mach. Scr. 5/16-18 x 3/4									4
3	11069	. Pipe Cap									1
4	5905	. Nipple									1
5	5-04617	. 90° Elbow									1
6	100187	. Nipple									1
7	17-13521	. 90° St. Elbow									1
8	54871	. Transmission Case									1
9	5-04612	. Pipe Plug									1
10	6-04424	. Gear									1
11	105687	. Spacer									1
12	5-04424	. Gear									1
13	5-04309	. Gasket									2
14	103235	. Spacer									1
15	108557	. Bearing									2
16	5-04602	. Key									2
17	5-04303	. Cover									2
18	105688	. Coverplate									1
19	105689	. Gasket									1
20	35-8189	. Retaining Ring									1
21	35-8664	. Retaining Ring									1
22	31714	. Input Shaft and Pinion									1
23	105710	. Retaining Ring									1
24	105698	. Bearing									1
25	100122	. Bearing									1
26	35-7538	. Retaining Ring									1
27	2273	. Bearing									1
28	29277	. Clutch Gear									1
* 29	111449	. Shifter Fork Assembly									1
30	111446	. . Shifter Shaft									1
31	111448	. . Shifter Yoke Weldment									1
* 32	111451	. Shifter Clutch Assembly									1
33	48621	. . Shifter Clutch									1
34	111450	. . Ball Bearing									1
35	4209	. . Rollpin									3
36	5-04415	. Dowel Pin									1
37	6-04421	. Clutch Gear									1
38	105686	. Spacer									1
39	105699	. Bearing									1
40	105691	. Gasket									1
41	105690	. Cover Plate									1
42	1719	. Retaining Ring									1
43	35-7192	. Key									2
44	29199	. Output Shaft									1
45	105709	. Retaining Ring									1
46	105700	. Shim									As Req.
47	29269	. Counter Shaft									1
48	47046	. Transmission Cover									1
49	5-04412	. Dowel Pin									1
50	5-04311	. Gasket									1

*NOTE Shifter Fork Assembly was #35-5026 and clutch assembly was #6-04505.
To replace any obsolete part order together #111449 Shifter Fork Assembly
and #111451 Shifter Clutch Assembly.



NOTE: VARIABLE ASSY # 34-05000
 REPLACES ASSY. NO'S 35-6597, 35-8015 & 43059
 COMPLETE ASSEMBLIES MUST BE ORDERED TO
 REPLACES PARTS IN ABOVE ASSEMBLIES.



#34-05000
 VARIABLE PULLEY

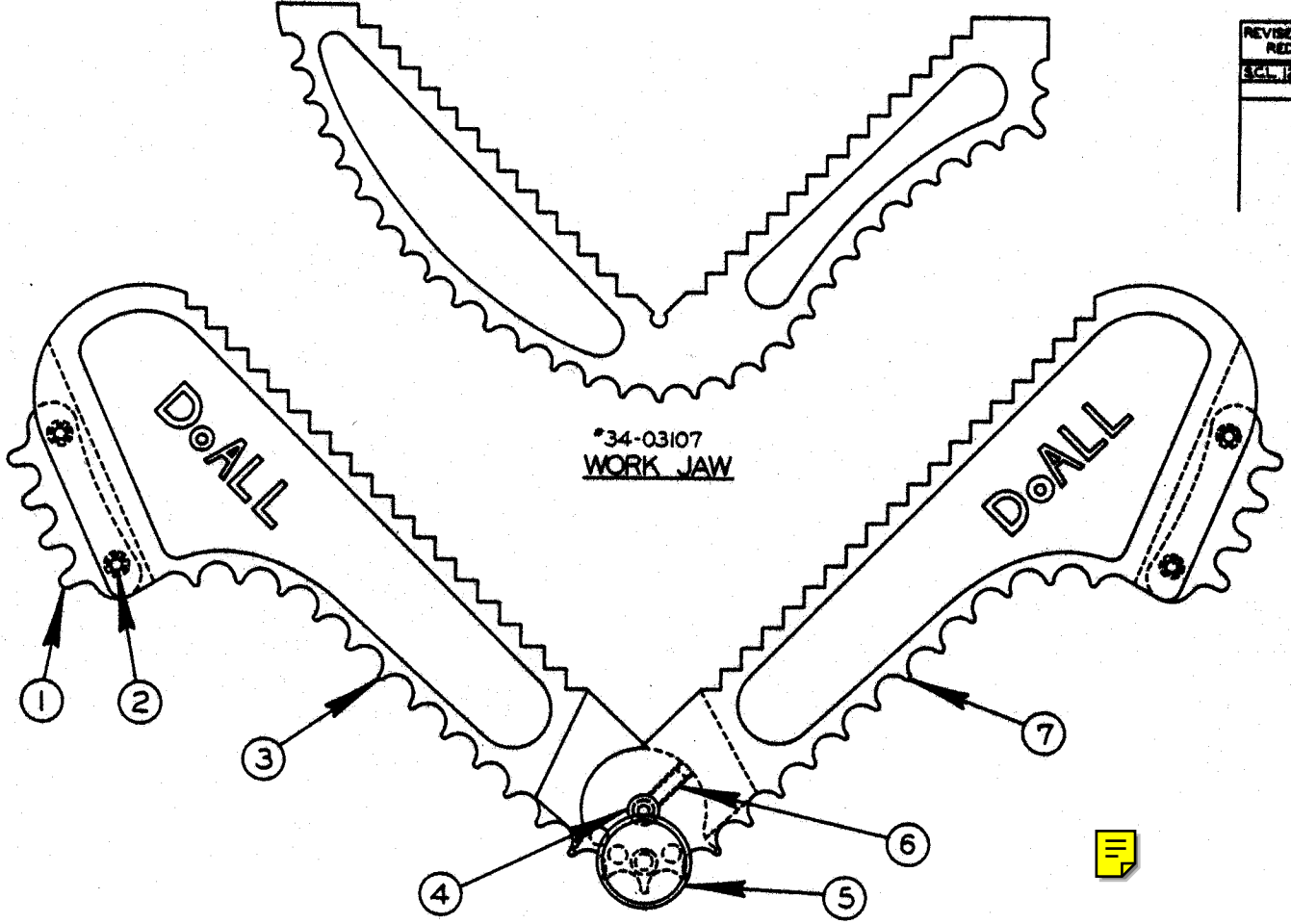
MODEL FIRST MACH. LAST MACH.
 CM-16 116-57101 116-60112

C-5-35 G7-4.2

PRINTED IN U.S.A.

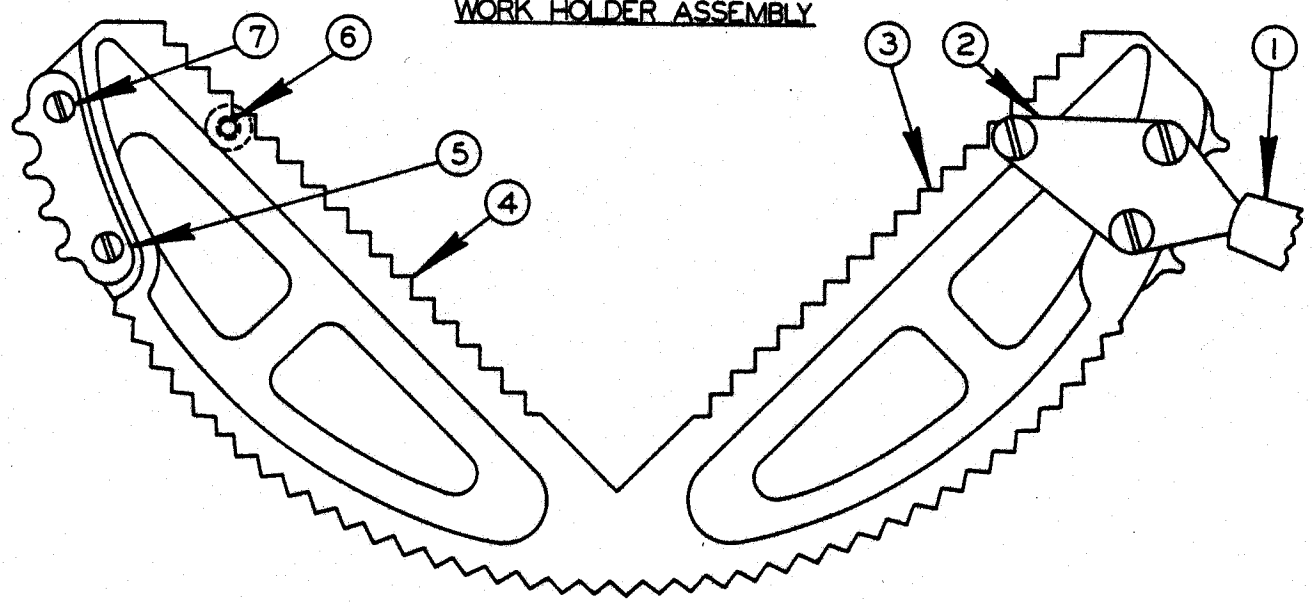
VARIABLE PULLEY ASSEMBLY

INDEX NO. Ref.	PART NO.	DESCRIPTION	UNITS PER ASS'Y
	34-05000	Variable Pulley Assembly	
1	35-5877	. Variable Oiler.....	1
2	35-6039	. Oiler Bolt.....	1
3	34-05519	. Copper Gasket.....	3
4	35-2736	. Washer.....	2
5	34-05311	. Oil Carrier.....	1
6	45665	. Variable Sheaver Sleeve Sub-Assembly.....	1
7	34-05525	. Snap Ring.....	1
8	34-05401	. Variable Pulley Shaft.....	1
9	35-6381	. Bolt 5/8-11NC x 1.....	1



*34-03107
WORK JAW

*40262
WORK HOLDER ASSEMBLY



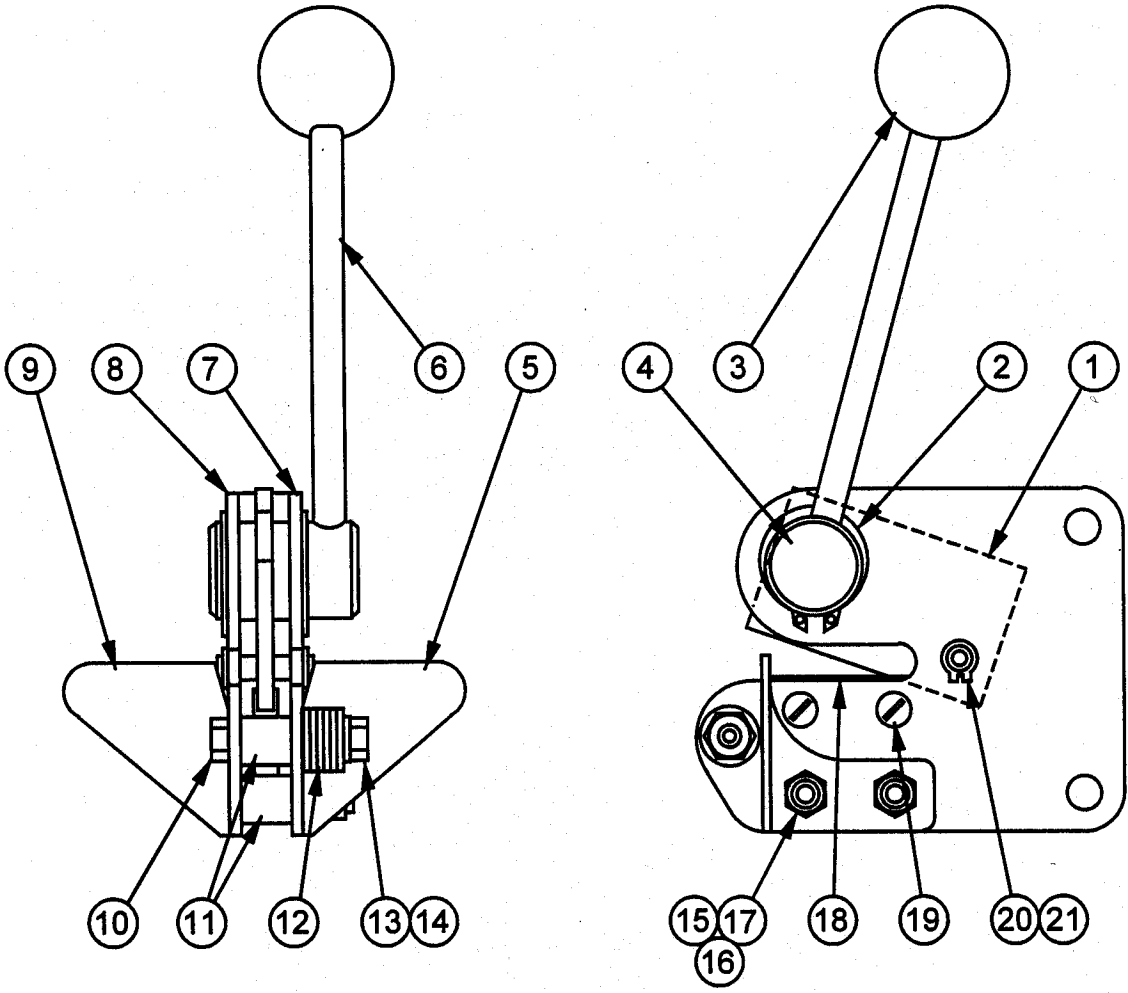
*5-13007
WORK HOLDING JAW ASSEMBLY

CODE NO. C-10-16
CM-9-5
Z-9-9

WORK HOLDING JAW

INDEX NO.	CATALOG NO.	DESCRIPTION	UNITS PER ASS'Y
REF.	134-031079	Work Jaw	
REF.	090-402629	Work Holder Assembly	
*1	105-133136	. Sprocket	2
2	091-986984	. Screw, Fil. Hd. Mach. #10-24NC x 1/2	4
3	090-203860	. Left Arm	1
4	091-982355	. Screw, Soc. Hd. Cap 1/4-20NC x 3/8	1
5	090-021627	. Knurled Screw	1
6	091-984104	. Screw, Soc. Hd. Set #10-24NC x 1/4	2
7	090-203852	. Right Arm	1
REF.	105-130074	Work Holding Jaw Assembly	
1	105-135123	. Handle	2
2	105-133185	. Handle Bracket	2
3	090-406786	. Work Holding Jaw Sub-Assembly	1
4	105-131106	. . Work Holding Jaw	1
*5	105-133136	. . Sprocket	2
6	091-988923	. . Screw, Rd. Hd. Mach. 1/4-20NC x 5/16	6
7	091-990150	. . Screw, Truss Hd. Mach. #10-24NC x 3/8	4

*NOTE: Before 2/12/44 On Hydraulic Machines Use #106-233372 Sprocket With 3/16" Pitch, Specify Pitch Of Chain When Ordering.



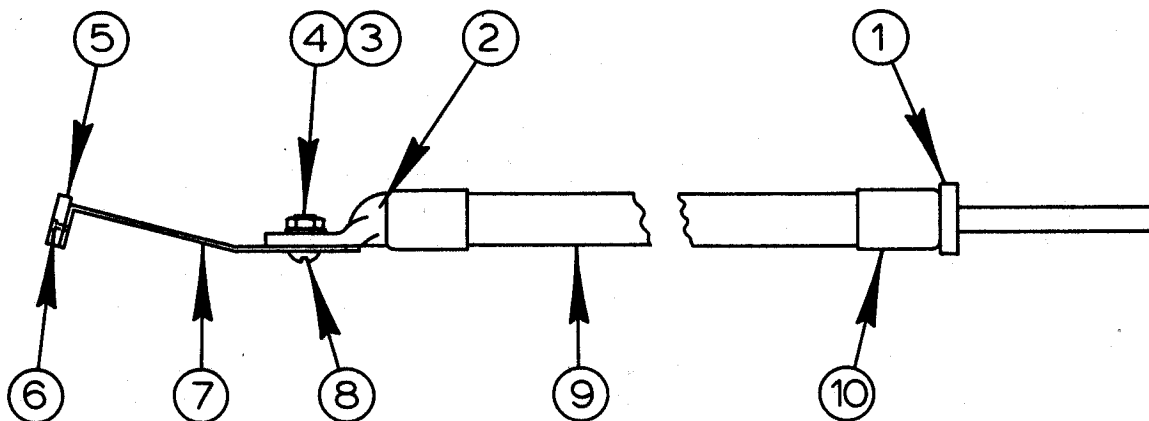
BLADE SHEAR ASSEMBLY

BLADE SHEAR ASSEMBLY

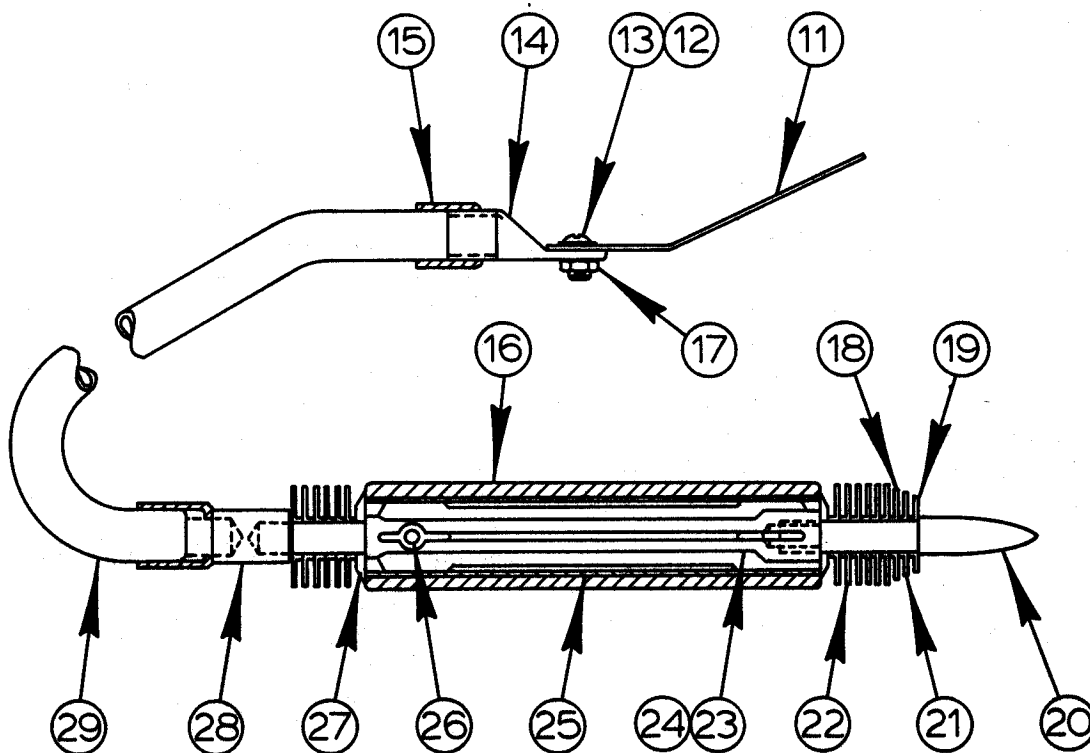
INDEX NO. Ref.	PART NO.	DESCRIPTION	UNITS PER ASSY.
1	091-318073	Blade Shear Assembly	
2	135-084374	. Knife	1
3	135-075588	. Retaining Ring	2
4	134-135086	. Knob	1
5	135-084416	. Eccentric.....	1
6	135-084465	. R.H. Square.....	1
7	135-084382	. Handle	1
8	135-084481	. R.H. Side Plate	1
9	135-084473	. L.H. Side Plate.....	1
10	135-084457	. L.H. Square	1
11	091-980128	. Screw, Hex. Hd. Cap 1/4-20NC x 1-1/2	1
12	091-000166	. Spacer	3
13	091-992610	. Washer, Flat 1/4 S.A.E. Std.....	6
14	091-991158	. Nut, Hex. 1/4-20NC	1
15	091-993212	. Washer, Lock 1/4 Std.	1
16	091-980110	. Screw, Hex. Hd. Cap 1/4-20NC x 1-1/4	2
17	091-991158	. Nut, Hex. 1/4-20NC	2
18	091-993212	. Washer, Lock 1/4 Std.	2
19	091-000158	. Blade	2
20	091-988659	. Screw, Rd. Hd. Mach. #10-24NC x 1/4	4
21	135-084515	. Pin	1
	135-085827	. Retaining Ring	2

Following Not Shown and Used for Mounting. Select What Applies to Your Machine:

091-211276	. Nutsert 5/16-18NC.....	2
091-980276	. Screw, Hex. Hd. Cap 5/16-18NC x 3/4.....	2
091-993238	. Washer, Lock 5/16 Std.	2
091-467209	. Bracket	1
091-989061	. Screw, Rd. Hd. Mach. 5/16-18NC x 3/4	2



ETCHING PENCIL SHORT END ASSEMBLY



ETCHING PENCIL ASSEMBLY

ETCHING PENCIL ASSEMBLY

INDEX NO.	PART NO.	DESCRIPTION	UNITS PER ASS'Y
Ref.	113-070031	Etching Pencil Assembly	
*Ref.	135-051092	. Etching Pencil Short End Assembly.....	1
1	106-074206	. . Plug.....	1
2	090-195454	. . Terminal Lug.....	1
3	091-991091	. . Nut, Hex. Jam #8-32NC.....	1
4	091-992925	. . Washer, Flat #8-S Brass.....	1
5	113-073035	. . Welder Jaw Insulator.....	1
6	134-184076	. . File Rivet.....	2
7	113-073027	. . Terminal Strip.....	1
8	091-988527	. . Screw, Rd. Hd. Mach. #8-32NC x 5/16.....	1
9	091-359943	. . Cable.....	A.R.
10	090-021544	. . Ferrule.....	2
Ref.	113-070049	. Etching Pencil Assembly.....	1
11	113-073043	. . Terminal Strip.....	1
12	091-988527	. . Screw, Rd. Hd. Mach. #8-32NC x 5/16.....	1
13	091-992909	. . Washer, Flat #10-L Brass.....	1
14	090-195454	. . Terminal Lug.....	1
15	090-021544	. . Ferrule.....	2
16	106-075039	. . Tube.....	1
17	091-991091	. . Nut, Hex. Jam #8-32NC.....	1
18	106-073083	. . Fin.....	1
19	106-073109	. . Fin.....	1
20	106-074248	. . Point.....	1
21	106-073091	. . Fin.....	1
22	106-073075	. . Fin.....	12
23	135-050771	. . Etching Pencil Stem Assembly.....	1
24	106-072010	. . . Stem.....	1
25	106-074212	. . . Brass Tube.....	1
26	106-074255	. . . Pin.....	1
27	106-073117	. . Washer.....	2
28	106-074230	. . Connector.....	1
29	091-359943	. . Cable.....	A.R.

*NOTE: This Assembly Used For Buttwelders With Ground Bushing On Panel Before 6-23-44.